

19" EQUIPMENT

Racks » Rackware® Accessories » Power Distribution



Lowell.[™]

Since 1947 | Lowellmfg.com

TABLE OF CONTENTS



RACKS, CABINETS & IN-WALL BOXES 1-8

Floor Racks	1-2	Racks for Built-In Applications	6
Data / IT Infrastructure	1	Pull-out	6
Open Frame	1-2	Stationary	6
Standalone	3	In-Wall Boxes	6
Four-Post	2	Wall-Mount Shelves	6
Two-Post	2	Portable Racks	7
Wall Racks	4-5	Desktop / Under Counter Racks	7
Stationary	4	Rack with Accessory Bundles	8
Swing-Open	4		
Tilt-Out	4		
Networking	5		



RACKWARE® ACCESSORIES 9-27

Rackmount Shelves	10-11	Doors & Access Covers	20-21
Rackmount Drawers, Liners & Storage ..	12	19" Rack Panels	22-24
Cable Management	13-15	Security Covers	24
Thermal Management	15-16	Display Mount	24
Rack Bases	17	Rack Lighting	24
Mounting Rails	18-19	Side Panels	25
Specialty Tops & Covers	19	Hardware	26-27



POWER DISTRIBUTION PRODUCTS 28-35

Power Strips	28	Pass-Through Connection Devices	33
19" Panels w/Power or Interface	29	Pass-Through Sequencers	33
Uninterruptible Power Supplies	30-31	Pass-Through Remote Power Controls	33
Classic Connection Devices	32	Pass-Through Relays	33
Classic Sequencers	32	Advanced Surge Protection	34
Classic Remote Power Controls	32	Multi-Output DC Power Distribution	34
Classic Relays	32	Low-Voltage (SPST) Switches	35

DATA / IT INFRASTRUCTURE



DAT24 Series	network rack (24"W)
Removable Side Panels	included
Split Rear Door	included
Front Door	included
Mounting Rails	adjustable, square holes
Rack Units	24, 42, 45 or 48U
Overall Depth	36, 42 or 48 in.
Overall Width	24.00 in.
Finish	black or white
Load Capacity	3150 lbs.



DAT31 Series	server rack (31.5"W)
Removable Side Panels	included
Split Rear Door	included
Front Door	included
Mounting Rails	adjustable, square holes
Rack Units	42, 45 or 48U
Overall Depth	36, 42 or 48 in.
Overall Width	24.00 in.
Finish	black or white
Load Capacity	3150 lbs.



DAT24F Series	network rack frame (24"W)
Removable Side Panels	optional
Rear Door	optional
Front Door	optional
Mounting Rails	adjustable, square holes
Rack Units	24, 42, 45 or 48U
Overall Depth	36, 42 or 48 in.
Overall Width	24.00 in.
Finish	black or white
Load Capacity	3150 lbs.



DAT31F Series	server rack frame (31.5"W)
Removable Side Panels	optional
Rear Door	optional
Front Door	optional
Mounting Rails	adjustable, square holes
Rack Units	42, 45 or 48U
Overall Depth	36, 42 or 48 in.
Overall Width	24.00 in.
Finish	black or white
Load Capacity	3150 lbs.

OPEN-FRAME / GANGABLE



LGR Series	gangable rack
Side Panels	optional
Rear Door	included *
Front Door	optional
Mounting Rails	adjustable, tapped 10-32
Rack Units	24, 35, 40 or 44U
Overall Depth	22, 27, 32, 36 or 42 in.
Overall Width	23.06 in.
Load Capacity	3150 lbs. (UL Listed)
Third Party Listing	UL2416

* may be omitted if not needed



LSGR Series	seismic-certified, gangable
Side Panels	optional
Rear Door	included
Front Door	optional
Mounting Rails	adjustable, tapped 10-32
Rack Units	40 or 44U
Overall Depth	27, 32 or 36 in.
Overall Width	23.06 in.
Load Capacity	900-1200 lbs.* (seismic-cert) 3150 lbs. (UL Listed)
Third Party Listing	UL2416

*Professional engineer certified. Load capacity dependent upon model.



LGNR Series	narrow gangable rack
Side Panels	optional
Rear Door	included *
Front Door	optional
Mounting Rails	adjustable, tapped 10-32
Rack Units	24, 37, 40 or 44U
Overall Depth	27, 32 or 36 in.
Overall Width	22.00 in.
Load Capacity	3150 lbs. (UL Listed)
Third Party Listing	UL2416

* may be omitted if not needed



LGVR Series	gangable video rack
Side Panels	optional
Rear Door	included
Front Door	optional
Mounting Rails	adjustable, tapped 10-32
Rack Units	44U
Overall Depth	32 or 36 in.
Overall Width	22.00 in.
Load Capacity	3150 lbs. (UL Listed)
Third Party Listing	UL2416



Available bundled with accessories (field mounted). Visit www.lowellmfg.com for details.



OPEN-FRAME / GANGABLE (CONTINUED)



LGTR Series	extra-tall gangable rack
Side Panels	optional
Rear Door	included *
Front Door	optional
Mounting Rails	adjustable, tapped 10-32
Rack Units	54U
Overall Depth	32 or 36 in.
Overall Width	22.00 in.
Load Capacity	3150 lbs. (UL Listed)
Third Party Listing	UL2416

* may be omitted if not needed



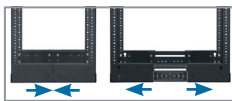
LXR Series	slim frame
Side Panels	optional
Rear Access Cover	optional
Front Door	optional
Mounting Rails	corner-post, tapped 10-32
Rack Units	8, 14, 22, 30*, 38* or 44U*
Overall Depth	21.00 or 26.25 in.
Overall Width	19.21 in.
Load Capacity	400 lbs.
Ships	unassembled

* Side support brackets included with racks 30U+.



LVR Series	VARI-RACK™ slim frame, adjustable depth
Rear Access Cover	optional
Front Door	optional
Mounting Rails	corner-post, tapped 10-32
Rack Units	8, 14, 22, 30*, 38* or 44U*
Overall Depth	14-21 or 21-28 in. adj.
Overall Width	19.21 in.
Load Capacity	400 lbs.
Ships	unassembled

* Side support brackets included with racks 30U+.



ADJUSTABLE DEPTH: Side views of rack closed and expanded.



CR2P Series	cable rack, two-post
Vertical Channels	6 in. wide
Rack Units	45 or 52U
Overall Depth	18 in.
Overall Width	23.50 in.
Load Capacity	800 lbs.
Ships	unassembled
Includes	quarter-turn cable managers



TOOL-LESS INSTALL: Quarter-turn (left or right) secures included cable managers in place.



TWO-POST and FOUR-POST



NR2P Series	network rack, two-post
Vertical Channels	3 or 6 in. wide
Rack Units	38, 45 or 52U
Overall Depth	15 or 18 in.
Overall Width	20.25 in.
Load Capacity	800 lbs.
Ships	unassembled



LRR-3815	relay rack, two-post
Vertical Channels	3 in. wide
Rack Units	38U
Overall Depth	15 in.
Overall Width	20.25 in.
Load Capacity	---
Ships	unassembled



• Closeout



NR4P Series	network rack, four-post
Vertical Channels	3 in. wide
Rack Units	45 or 52U
Overall Depth	42 or 48 in.
Overall Width	20.25 in.
Load Capacity	800 lbs.
Ships	unassembled



NR4PA Series	adj. depth network rack, four-post
Vertical Channels	3 in. wide
Rack Units	45U
Overall Adj. Depth	36-48 or 48-54 in.
Overall Width	20.25 in.
Load Capacity	800 lbs.
Ships	unassembled



ADJUSTABLE DEPTH: Side supports feature a window that shows the depth setting of the rack.

STANDALONE



LER Series	enclosed rack
Side Panels	welded
Rear Door	included*
Front Door	optional
Mounting Rails	adjustable, tapped 10-32
Rack Units	18, 21, 24, 35, 40 or 44U
Overall Depth	22, 27 or 32 in.
Overall Width	23.06 in.
Load Capacity	500-3150 lbs. (UL Listed)
Third Party Listing	UL2416

* may be omitted if not needed



LSR Series	seismic-certified, enclosed
Side Panels	welded
Rear Door	included
Front Door	optional
Mounting Rails	adjustable, tapped 10-32
Rack Units	35, 40 or 44U
Overall Depth	27 or 32 in.
Overall Width	23.06 in.
Load Capacity	900-1200 lbs.* (seismic-cert) 3150 lbs. (UL Listed)
Third Party Listing	UL2416

* Professional engineer certified. Load capacity dependent upon model.



LFR Series	fixed rail rack
Side Panels	welded
Rear Door	included
Front Door	optional
Front Rails	fixed, tapped 10-32
Rear Rails	optional (semi-adjustable)
Rack Units	21, 24, 35, 40 or 44U
Overall Depth	22 or 27 in.
Overall Width	23.06 in.
Load Capacity	500-2000 lbs. * (UL Listed)
Third Party Listing	UL2416

* Dependent upon model.

• Closeout



LHR Series	host rack (exterior cabinet with pull-out rack)
Side Panels	welded
Rear Access Cover	optional
Front Door	optional
Mounting Rails	corner-post, tapped 10-32
Rack Units	24, 35 or 44U
Overall Depth	33 or 43 in.
Overall Width	24.00 in.
Load Capacity	750 lbs.



8\"/>



SLIDES OUT & ROTATES: Interior base and rack slide out of cabinet allowing rack to rotate, and can disengage from cabinet for shop wiring.



LLR Series	laminated rack
Front/Rear Doors	----
Mounting Rails	fixed, tapped 10-32
Rack Units	10, 12, 16 or 21U
Overall Depth	18 in.
Overall Width	20.41 in.
Laminate Finish	Black Woodgrain
Load Capacity	200 lbs.
Ships	unassembled



LDR Series	designer rack
Side Panels	included
Rear Access Cover	included
Front Door	included (tempered glass)
Mounting Rails	adjustable, tapped 10-32
Rack Units	18, 27, 35 or 42U
Overall Depth	24 in.
Overall Width	22.31 in.
Load Capacity	500-1200 lbs.*

* Dependent upon model.



Available with pre-installed accessories see Lcdr Series at www.lowellmfg.com for details.



WALL RACKS

STATIONARY



LWER Series		stationary wall rack
Side Panels	welded	
Front Door	included (solid)	
Mounting Rails	fixed, tapped 10-32	
Rack Units	7 or 10U	
Overall Depth	18.18 in.	
Overall Width	23.06 in.	
Load Capacity	150 lbs. (UL Listed)	
Third Party Listing	UL2416	

 FRONT DOOR INCLUDED



VR Series		versatile wall rack (space saver)
Rack Units	2, 3, 4 or 6U (vertical hold)	
Overall Height	6 or 7.75 in.	
Overall Depth	3.94, 5.69, 7.44 or 10.94 in.	
Overall Width	19.17 in.	
Load Capacity	200 lbs.	



VWR Series		variable width wall rack
Rack Units	12 or 20U	
Overall Height	21.25 or 35.25 in.	
Overall Depth	12 or 18 in.	
Overall Width	variable	
Load Capacity	100 lbs.	

• *Closeout*

SWING-OPEN



 **SWINGS OPEN 90°:**
Cabinet swings open for access to equipment.

LWSR Series		swing-open, wall rack
Swing Orientation	reversible (left or right)	
Side Panels	welded	
Front Door	optional	
Mounting Rails	fixed, tapped 10-32	
Rack Units	7, 10, 12 or 16U	
Overall Depth	22 in.	
Overall Width	23.06 in.	
Load Capacity	150 lbs.	



 **SWINGS OPEN MORE THAN 90°:** Cabinet swings open for access to equipment.

LWR Series		heavy duty sectional, swing-open wall rack
Swing Orientation	reversible (left or right)	
Side Panels	welded	
Front Door	optional	
Mounting Rails	adjustable, tapped 10-32	
Rack Units	7, 10, 12, 16, 18, 21, 24 or 35U	
Overall Depth	19, 23, 28 or 32 in.	
Overall Width	23.06 in.	
Load Capacity	125-300 lbs. (UL Listed) *	
Third Party Listing	UL2416 *	

**Dependent upon model.*




 **SWINGS OPEN ON BASE:** Cabinet swings open 90° on support base for access to equipment.

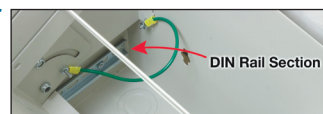
LWBR Series		swing-open wall rack with support base
Swing Orientation	reversible (left or right)	
Side Panels	welded	
Front Door	optional	
Mounting Rails	adjustable, tapped 10-32	
Rack Units	24, 35, 40 or 44U	
Overall Depth	22.40, 28.40 or 32.40 in.	
Overall Width	23.06 in.	
Load Capacity	500 lbs.	




TILT-OUT



 **MANUAL RELEASE:** Main compartment tilts out.



 **DIN RAIL:** Included in base of LTR Series wall racks.

LTR Series		tilt-out wall rack
Style	surface or recessed	
Main Compartment	manual release	
Mounting Rails	adj. & fixed, tapped 10-32	
Rack Units	3U horiz.; 2, 3 or 4U vertical	
Overall Depth	5.13 - 8.13 in.	
Overall Width	24.50 in. (25.70 in. w/trim plate)	
Load Capacity	100 lbs.	



 **CONTROLLED RELEASE:** Main compartment features dampers for controlled descent.

LTRC Series		tilt-out wall rack with dampers
Style	surface or recessed	
Main Compartment	controlled release	
Mounting Rails	adj. & pivoting, tapped 10-32	
Rack Units	3U horiz.; 3U vertical	
Overall Depth	6.09 or 6.80 in.	
Overall Width	25.00 in. (26.50 in. w/trim plate)	
Load Capacity	50 lbs.	

NETWORKING



SR Series

	wall-mount swing rack
Mounting Rails	fixed, tapped 10-32
Rack Units	12, 20 or 25U
Overall Depth	12, 18 or 24 in.
Overall Width	19.75 in.
Load Capacity	100 lbs.
Ships	unassembled



SWINGS OPEN 90°: Front frame (left or right orientation) swings open for access.



SGR Series

	heavy duty swing gate wall rack
Mounting Rails	fixed, tapped 10-32
Rack Units	12 or 20U
Overall Depth	13.21 or 19 in.
Overall Width	20.03 in.
Load Capacity	150 lbs.



SWINGS OPEN 90°: Front gate (left or right orientation) swings open from fully open side for extraordinary access.



PFR Series

	pivot frame wall rack
Top Cover	optional
Front Panel	optional
Mounting Rails	fixed, tapped 10-32
Rack Units	4, 6 or 8U
Overall Depth	6, 12 or 18 in.
Overall Width	19.30 in.
Load Capacity	30-60 lbs.*

*Dependent upon model.

PIVOTS DOWN: Frame pivots down 90° with absolute stop



HUB Series

	hinged utility wall bracket
Top Cover	optional
Mounting Rails	fixed, tapped 10-32
Rack Units	2, 4 or 6U
Overall Depth	6 in.
Overall Width	19.17 in.

180° SWING-OUT: Hinged design allows easy access to cables.



RCC Series

	remote consolidation cabinet
Style	surface
Front Door	included (vented)
Mounting Rails	fixed, dual-punch*
Top Rack Units	2 or 3U horiz., pivot-down access
Bottom Rack Units	2 or 4U vertical-mount
Overall Depth	5.00 - 7.50 in.
Overall Width	25.50 in.
Load Capacity	150 lbs.

* Tapped 10-32 for screws, plus holes for alternate hardware

FRONT DOOR INCLUDED



RCCD Series

	remote consolidation cabinet with flip-top access
Style	surface
Front Door	included (flip-top, vented)
Mounting Rails	fixed, dual-punch*
Top Rack Units	4U horiz., pivot-down access
Bottom Rack Units	6U vertical-mount
Overall Depth	11.19 in.
Overall Width	25.50 in.
Load Capacity	150 lbs.

* Tapped 10-32 for screws, plus holes for alternate hardware

FRONT DOOR INCLUDED



SMR Series

	side/top-mount wall rack
Style	surface
Versatile Mount	side- or top-mount
Mounting Rails	adjustable, tapped 10-32
Rack Units	2 or 4U
Overall Depth	21.63 in.
Overall Width	19.31 in. (with cover)
Load Capacity	50 lbs.

VERTICAL OR HORIZONTAL MOUNT: Bi-directional keyhole slots on standard 16 in. centers mounts rack vertically or horizontally.



WXR Series

	slim wall rack
Mounting Rails	corner-post, tapped 10-32
Rack Units	8, 12, 22 or 30
Overall Depth	6, 12 or 18 in.
Overall Width	19.21 in.
Load Capacity	125 - 200 lbs.
Ships	unassembled





RACKS FOR BUILT-IN APPLICATIONS

PULL-OUT



LPOR Series	pull-out rack
Mounting Rails	corner-post, tapped 10-32
Rack Units	7, 10, 12, 14, 16 or 21U
Overall Depth	19.22 in.
Overall Width	19.06 in.
Load Capacity	125-250 lbs.*
Ships	unassembled

*Dependent upon model.



PULL-OUT: Slides forward on rails set in lower base.



LPTR Series	pull & turn rack
Mounting Rails	corner-post, tapped 10-32
Rack Units	10, 12, 14, 16, 21, 24 [†] , 28 [†] , 30U [†]
Overall Depth	19.22 or 23.38 in.
Overall Width	19.13 in.
Load Capacity	125-250 lbs.*
Ships	unassembled

*Dependent upon model.



[†] Taller models (24+) include side stiffener rails

PULL & TURN: Slides forward on rails set in lower base. Rack rotates left or right with 90° and 60° stops.

STATIONARY



LCR Series	credenza rack
Mounting Rails	corner-post, tapped 10-32
Rack Units	8, 10, 12, 14 or 16U
Overall Depth	16, 18, 20 or 23 in.
Overall Width	19.25 in.
Load Capacity	250 lbs.



LHFR Series	half rack
Top/Base	integral rails, tapped 10-32
Mounting Rails	corner-post, tapped 10-32
Rack Units	8 or 12U
Overall Depth	14 in.
Overall Width	10.69 in.
Load Capacity	125 lbs.

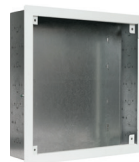


IN-WALL BOXES



IWB Series	in-wall boxes
Box Height *	9.25, 14.25 or 22.25 in.
Box Depth *	3.6 in.
Box Width *	14.25 in.
Load Capacity	15 lbs.

* Without trim plate



IWBK-1414	in-wall box with breakaway
Box Height *	14.25 in.
Box Depth	3.6 in.
Box Width *	14.25 in.
Load Capacity	15 lbs.

* Without trim plate

ADJUSTABLE DEPTH: Sides have breakaway sections for shallower depth walls.



IWB-PB Series	power brackets for IWB(K) boxes
Height	2.2 in.
Width	2.2 in.
Length	9.53 in. or 14 in.
MODELS:	
IWB-PB2	NEMA 5-15R duplex (2)
IWB-PB3	NEMA 5-15R duplex (3)
IWB-PB220S	NEMA 5-20R duplex (2) w/surge suppression
IWB-PB320S	NEMA 5-20R duplex (3) w/surge suppression

WALL-MOUNT SHELVES



WS21-17	welded wall shelf (heavy duty)
Overall Height	15 in.
Overall Depth	17 in.
Overall Width	21 in.
Load Capacity	200 lbs.



WSL-1814	wall shelf (light duty)
Overall Height	3.47 in.
Overall Depth	14 in.
Overall Width	18 in.
Load Capacity	40 lbs.



FS Series	flat-ship wall shelf (hinged)
Overall Height	8.24 in.
Overall Depth	14, 16 or 20 in.
Overall Width	18.22 in.
Load Capacity	100 lbs.



WMS-CPU Series	wall shelf for computer tower
Overall Height	10.00 in.
Overall Depth	4 or 8 in.
Overall Width	19.09 in.
Load Capacity	75 lbs.



LPR Series	portable rack
Top	steel
Side Panels	welded, recessed handle
Rear Door	included
Front Door	included (solid)
Mounting Rails	adjustable, tapped 10-32
Rack Units	14, 21 or 24U
Overall Depth	22 or 27 in. *
Overall Width	23.06 in. *
Load Capacity	900 lbs. (UL Listed)
Third Party Listing	UL2416

* Dimensions are without front door.

 FRONT DOOR INCLUDED



LPR--FV Series	portable rack
Top	steel
Side Panels	welded, recessed handle
Rear Door	included
Front Door	included (fully-vented)
Mounting Rails	adjustable, tapped 10-32
Rack Units	14, 21 or 24U
Overall Depth	22 or 27 in. *
Overall Width	23.06 in. *
Load Capacity	900 lbs. (UL Listed)
Third Party Listing	UL2416

* Dimensions are without front door.

 FRONT DOOR INCLUDED



LPR--PGT Series	portable rack
Top	steel plus premium laminate
Side Panels	welded, recessed handle
Rear Door	included
Front Door	included (smoked plexiglass)
Mounting Rails	adjustable, tapped 10-32
Rack Units	14, 21 or 24U
Overall Depth	22 or 27 in.*
Overall Width	23.06 in.*
Load Capacity	900 lbs. (UL Listed)
Third Party Listing	UL2416

* Dimensions are without front door or laminate top.

 FRONT DOOR INCLUDED



LPPR-2432	portable presentation rack
Top	steel plus premium laminate
Side Panels	welded
Rear Door	included
Front Door	included (smoked plexiglass)
Mounting Rails	adjustable, tapped 10-32
Rack Units	24U
Overall Depth	32 in.*
Overall Width	23.06 in.*
Load Capacity	900 lbs. (UL Listed)
Third Party Listing	UL2416

* Dimensions are without front door or laminate top.

 FRONT DOOR INCLUDED

DESKTOP / UNDER COUNTER RACKS



LDTR Series	desktop rack
Side Panels	welded
Rear Access Cover	optional
Front Door	optional
Mounting Rails	fixed, tapped 10-32
Rack Units	7, 10, 12, 14 or 16U
Overall Depth	18.18 in.
Overall Width	23.06 in.
Load Capacity	150 lbs.

 **BIMModels**
Available Online



LDSR Series	desktop rack with sloped front
Side Panels	welded
Rear Access Cover	optional
Front Door	-----
Mounting Rails	fixed, tapped 10-32
Rack Units	7, 10 or 12U
Overall Depth	18 in. (at base)
Overall Width	21.10 in.



LPSR Series	pull-out studio rack with sloped front, casters
Side Panels	welded
Rear Access Cover	included
Front Door	included (hideaway style)
Mounting Rails	fixed, tapped 10-32
Rack Units	12U
Overall Depth	25.52 in. (at base)
Overall Width	23 in.
Load Capacity	250 lbs.

 FRONT DOOR INCLUDED



LRS Series	two-post angled rack
Mounting Rails	corner-post, tapped 10-32
Rack Units	8 or 12U
Overall Depth	11.50 in.
Overall Width	19.06 in.
Load Capacity	80 lbs.
Ships	unassembled

 **KNOCKDOWN**



LER-BAV Series: enclosed rack with accessory bundle (packaged separately)

INCLUDES:

- Solid front door w/key lock
- Two pair adjustable rails
- Power strip(s) w/15A and 20A outlets
- 7U panel w/four whisper fans
- Horizontal and vertical cable managers
- Heavy-duty leg levelers
- Magnetic vent blockers

See spec sheets online for more details



LGNR-BAV Series: narrow gangable rack with accessory bundle (packaged separately)

INCLUDES:

- Solid front door w/key lock
- Side panels w/integral handles
- Power strip w/15A and 20A outlets
- 7U panel w/turbo fan
- Thermostat control for fan activation
- Horizontal and vertical cable managers
- Heavy-duty leg levelers

See spec sheets online for more details



LCDR Series: pre-configured design rack with installed accessories

INCLUDES:

- Vented shelves
- Blank panels
- Two whisper fans in top vents
- Swivel casters
- Leg levelers

See spec sheets online for more details

RACKWARE® ACCESSORIES
&
POWER DISTRIBUTION



LXR-NS21

Made For **WIDE** EQUIPMENT



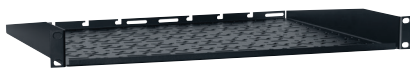
US-214



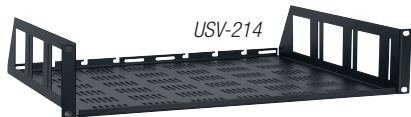
USE-210



USM-110



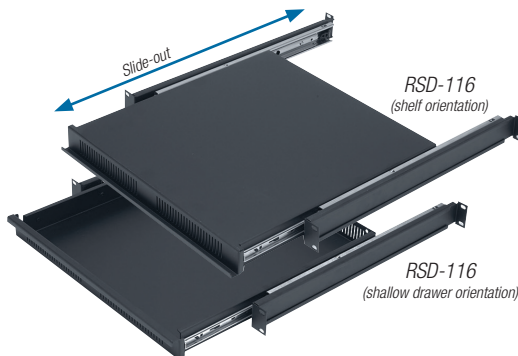
USMG-114



USV-214



USVC-215



RSD-116 (shelf orientation)

RSD-116 (shallow drawer orientation)

SHELVES

Zero-Space Shelf: For wide equipment that won't fit standard rack spacing. Mounts on side rails at four points. 16-ga. steel with bottom vents and side obrounds. Black finish.

Model No.	Fits	Height	Depth	Width	Load Capacity
LXR-NS21	LXR and LVR 21"D Rack	1.5" (-1U)	20.45"	18.79"	250 lbs.
LXR-NS26	LXR and LVR 26"D Rack	1.5" (-1U)	25.69"	18.79"	250 lbs.
LPTR-NS	LPTR and LPOR Rack	1.5" (-1U)	16.38"	18.79"	250 lbs.

Utility Shelf: 16-ga. steel utility shelf with flanges. Rear flange features notches for mounting optional 12" power strip. Black finish. Available in single or multi-packs, or bundled with power strip.

Model No.	Height	Depth	Width	Load Capacity
US-110*	1U	10.75"	19.00"	50 lbs.
US-114*	1U	14.00"	19.00"	50 lbs.
US-210*	2U	10.75"	19.00"	50 lbs.
US-214*	2U	14.00"	19.00"	50 lbs.
US-310	3U	10.75"	19.00"	50 lbs.
US-314*	3U	14.00"	19.00"	50 lbs.
US-414	4U	14.00"	19.00"	50 lbs.

Bundle No.	Bundle Description
USAC-110	US-110 shelf and power strip
USAC-114	US-114 shelf and power strip
USAC-210	US-210 shelf and power strip
USAC-214	US-214 shelf and power strip



ACS-1507

* Available in multi-pack carton. See spec sheet for details.

Utility Shelf for Electronics: 16-ga. steel utility shelf with punched base for screw-mount installation of chassis style accessories. Front security panel. Rear flange and cable lacing points. Black finish.

Model No.	Height	Depth	Width	Load Capacity
USE-210	2U	10.00"	19.00"	50 lbs.
USE-310	3U	10.00"	19.00"	50 lbs.

Utility Shelf, Multiple Mounting Slots: 16-ga. steel utility shelf with mounting holes and slots in the base to provide a variety of tie-down points for small devices. Black finish.

Model No.	Height	Depth	Width	Load Capacity
USM-110*	1U	10.00"	19.00"	25 lbs.
USM-210*	2U	10.00"	19.00"	25 lbs.

* Available in multi-pack carton. See spec sheet for details.

Utility Shelf w/Flange, Multiple Mounting Slots: 16-ga. steel utility shelf with mounting holes and slots in the base to provide a variety of tie-down points for small devices. Includes front and rear flanges. Rear flange features notches for mounting optional 12" power strip. Black finish.

Model No.	Height	Depth	Width	Load Capacity
USMG-114	1U	14.00"	19.00"	25 lbs.

Utility Shelf, Vented: 16-ga. steel utility shelf with vented base and flanges. Rear flange features notches for mounting optional 12" power strip. Black finish.

Model No.	Height	Depth	Width	Load Capacity
USV-110	1U	10.75"	19.00"	50 lbs.
USV-214	2U	14.00"	19.00"	50 lbs.
USV-314	3U	14.00"	19.00"	50 lbs.
USV-414	4U	14.00"	19.00"	50 lbs.
USV-218	2U	18.00"	19.00"	50 lbs.

Bundle No.	Bundle Description
USVAC-110	USV-110 shelf with power strip
USVAC-214	USV-214 shelf with power strip
USVAC-218	USV-218 shelf with power strip



ACS-1507

Utility Shelf, Clamping: 16-ga. steel utility shelf with vents, clamping brackets to secure equipment, rear stops, and flanges. Side slots allow height adjustment of brackets. Black finish.

Model No.	Height	Depth	Width	Load Capacity
USVC-215	2U	15.00"	19.00"	50 lbs.
USVC-315	3U	15.00"	19.00"	50 lbs.
USVC-415	4U	15.00"	19.00"	50 lbs.

Reversible Shelf/Drawer: 16-ga. steel slide-out shelf, or shallow drawer depending upon orientation, with rear supports. Solid or vented base. Shelf extends 16" from front rails. Rear support extension 33" (max). Black finish.

Model No.	Description	Height	Depth	Width	Load Capacity
RSD-116	solid base	1U	18.00"	19.00"	80 lbs.
RSD-116V	vented base	1U	18.00"	19.00"	80 lbs.

- **Knockdown Shelf:** Base and sides sold separately for mix-and-match versatility. 16-ga. steel base with vents ships with hardware. Black finish.

Model No.	Description	Depth	Quantity	Load Capacity	For KSB Base
KSE2	2U sides	14.00"	1pr	50 lbs.	KSB14 & KSB18
KSE3	3U sides	14.00"	1pr	70 lbs.	KSB14 & KSB18
KSE4	4U sides	14.00"	1pr	70 lbs.	KSB14 & KSB18
KSE2X	2U sides	18.00"	1pr	50 lbs.	KSB18 & KSB21
KSE3X	3U sides	18.00"	1pr	70 lbs.	KSB18 & KSB21
KSE4X	4U sides	18.00"	1pr	70 lbs.	KSB18 & KSB21
KSB14	Vented base	14.00"	1 ea.	---	---
KSB18	Vented base	18.00"	1 ea.	---	---
KSB21	Vented base	21.00"	1 ea.	---	---

OPTIONS

KSTB	Clamping bracket
------	------------------

- **Closeout**

Variable Depth Shelves: 16-ga. steel shelf with vents, adjustable depth and brackets. Black finish. Two styles.

Model No.	Height	Usable Depth	Width	Load Capacity
VDS-2-2032	2U	20.00" - 32.00"	19.00"	250 lbs.
VDS-1-1525	1.50" (-1U)	15.25" - 25.00"	19.00"	400 lbs.

Variable Width Shelf: 16-ga. steel, 3-piece shelf with side supports expands from 17.5"-22"W behind front rack rails. Side supports can be installed with long or short side up to emulate 2U or 3U panel space. Black finish.

Model No.	Height	Depth	Usable Width	Load Capacity
VWS-214	2U or 3U	14.00"	17.50" - 22.00"	50 lbs.
VWS-218	2U or 3U	18.00"	17.50" - 22.00"	50 lbs.

Keyboard/Monitor Shelf: Reinforced shelf for a monitor and slide-out shelf for keyboard (not included), rotating tray. Extension tray for mouse for right- or left-hand use. Hinged front panel. Mounts on front and rear rack rails. Shelf extends 16" from front rails. Rear support extension 6" (max). Black finish. Includes wrist pad.

Model No.	Height	Depth	Width	Load Capacity
KDMS	4.34"	20.00"	19.00"	70 lbs.

Sliding Latching Shelf: 16-ga. steel slide-out shelf extends 14" from front rails and can latch in closed or open position. Measures slightly more than 1U. Rear support extension 23.50" (max). Black finish.

Model No.	Height	Depth	Width	Load Capacity
SLS	2.50" (+1U)	14.88"	19.00"	50 lbs.

RMK Shelf: 14-ga. steel shelf used with non-rackmount equipment up to 17.38"W. Ships flat, sides fold up for installation (no assembly required). Optional top clamp. Black finish.

Model No.	Height	Depth	Width	Load Capacity
RMK214-LFP	2U	14.00"	19.00"	50 lbs.
RMK314-LFP	3U	14.00"	19.00"	50 lbs.
RMK218-LFP	2U	18.00"	19.00"	50 lbs.
RMK318-LFP	3U	18.00"	19.00"	50 lbs.

OPTIONS

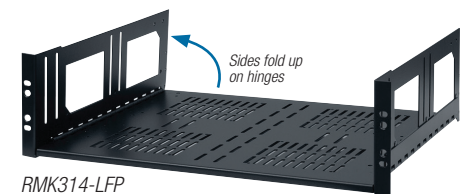
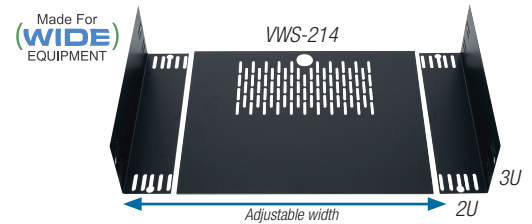
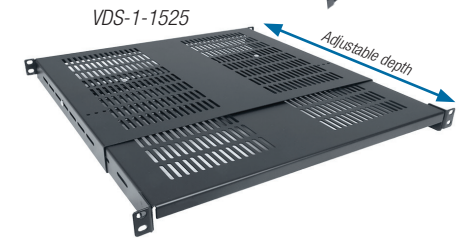
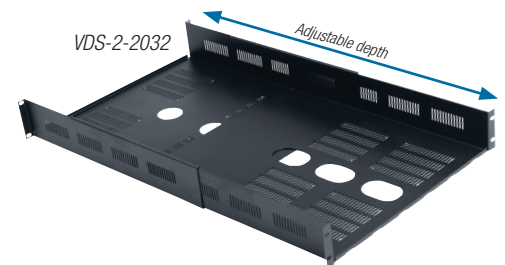
RMK-TCMP	Top clamp secures equipment less than 16.125" wide on the shelf
----------	---

Center-Mount Shelf: Designed to fit 2-post racks with 3" or 6" deep channels, this 16-ga. steel shelf provides a versatile solution for non-rackmount equipment. Black finish.

Model No.	Fits Rack Channel Depth	Height	Depth	Width	Load Capacity
CMS-220	3.00"	2U	20.00"	19.00"	50 lbs.
CMS-324	3.00"	3U	24.00"	19.00"	50 lbs.
CMSD-220	6.00"	2U	20.00"	19.00"	50 lbs.
CMSD-324	6.00"	3U	24.00"	19.00"	50 lbs.

Utility Shelf for Half Rack: 16-ga. steel utility shelf with vented base and flanges for LHFR series. Black finish.

Model No.	Height	Depth	Width	Load Capacity
UVSH-13	1.719" (-1U)	3.5"	10.40"	10 lbs.
UVSH-15	1.719" (-1U)	5.5"	10.40"	10 lbs.
UVSH-111	1.719" (-1U)	11.5"	10.40"	10 lbs.





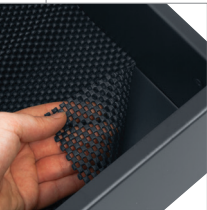
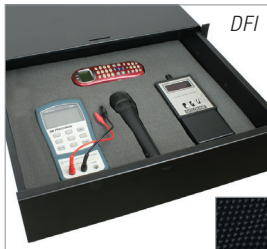
UDE-314



UDEL-314



UDP-314



SBL-39



MH4-CD



DRAWERS

UDE Series: Fully-welded 16-ga. steel utility drawer with integral handle has ball-bearing slides and plastic bushing in rear for wire pass-through (up to 1.06" diameter). Mounts to front rack rails on standard EIA spacing. Black finish. Mounting hardware not included.

Model No.	Height	Drawer Depth	Overall Depth*	Drawer Width	Overall Width	Lock	Load Capacity
UDE-214	2U	14.50"	15.07"	16.86"	19.00"	---	50 lbs.
UDE-314	3U	14.50"	15.07"	16.86"	19.00"	---	50 lbs.
UDE-414	4U	14.50"	15.07"	16.86"	19.00"	---	50 lbs.

* Overall depth includes handle.

UDEL Series: Fully-welded 16-ga. steel utility drawer with integral handle has ball-bearing slides and plastic bushing in rear for wire pass-through (up to 1.06" diameter). Mounts to front rack rails on standard EIA spacing. Includes keyed lock. Black finish. Mounting hardware not included.

Model No.	Height	Drawer Depth	Overall Depth*	Drawer Width	Overall Width	Lock	Load Capacity
UDEL-214	2U	14.50"	15.07"	16.86"	19.00"	Yes	50 lbs.
UDEL-314	3U	14.50"	15.07"	16.86"	19.00"	Yes	50 lbs.
UDEL-414	4U	14.50"	15.07"	16.86"	19.00"	Yes	50 lbs.

* Overall depth includes handle.

UDP Series: Heavy duty, fully-welded, 16-ga. steel utility drawer has ball-bearing slides and plastic bushing in rear for wire pass-through (up to 1.06" diameter). Mounts to front rack rails on standard EIA spacing. Includes recessed drawer pull, slam-latch closure, keyed lock for security and perforated mat liner.

Model No.	Height	Overall Depth	Drawer Width	Overall Width	Lock	Load Capacity
UDP-214	2U	14.50"	16.86"	19.00"	Yes	50 lbs.
UDP-314	3U	14.50"	16.86"	19.00"	Yes	50 lbs.
UDP-414	4U	14.50"	16.86"	19.00"	Yes	50 lbs.
UDP-614	6U	14.50"	16.86"	19.00"	Yes	50 lbs.

DRAWER LINERS

DFI Series: Thick die-cut foam allows you to pick-and-pull squares to create custom nests for sensitive electronics, keeping them secure. Includes solid foam base.

Model No.	Drawer Height	Depth	Width
DFI-2	2U	14.00"	15.50"
DFI-3	3U	14.00"	15.50"
DFI-4	4U	14.00"	15.50"

CDM: Non-slip perforated drawer mat (included with UDP Series drawers).

Model No.	Depth	Width
CDM	14.00"	15.50"

STORAGE

SBL Series: Fully welded 16-ga. steel locking storage box with front door hinged along bottom mounts to front rack rails using standard EIA spacing. Black finish. Features slam-latch closure and keyed lock.

Model No.	Height	Overall Depth	Overall Width	Box Width	Lock	Load Capacity
SBL-39	3U	9.00"	19.00"	17.34"	yes	50 lbs.
SBL-49	4U	9.00"	19.00"	17.34"	yes	50 lbs.

Media Holder: 16-ga. steel media holder with metal dividers for CD storage. Black finish.

Model No.	Height	Depth	Width	Load Capacity
MH4-CD	4U	5.40"	19.00"	42 CD (0.2"W)

HORIZONTAL-MOUNT

Cable Brush Panel: 16-ga. steel panel with tray and brush strip allows cable bundles to be routed between bristles, keeping dust and contaminants at bay while giving an assist to thermal management. Black finish.

Model No.	Description	Depth	Width
CBP-1	1U brush panel	3.00"	19.00"
CBP-2	2U brush Panel	3.00"	19.00"

Stackable Bars: 16-ga. steel slotted bars can be used independently or stacked on a horizontal plane to save rack space. A straight bar can be mounted at a right angle to another straight bar for dual-lacing configuration. Bars also serve as support bracing for equipment when used with mid or rear rails. Black finish.

Model No.	Description	Offset	Width
CMBS	Straight bar	---	19.00"
CMBS-2	Offset bar	2.00"	19.00"
CMBS-4	Offset bar	4.00"	19.00"
CMBS-6	Offset bar	6.00"	19.00"

Stackable Flat Wire: 11-ga. steel flat wire with smooth rounded edges can be used independently or stacked on a horizontal plane to save rack space while separating cables. Features multiple tie-down slots and holes. Robust design can be used as support bracing for equipment when used with mid or rear rails. Black finish.

Model No.	Description	Offset	Width
CMFW	Straight flat wire	---	19.00"
CMFW-2	Offset flat wire	1.75"	19.00"
CMFW-4	Offset flat wire	4.00"	19.00"

Steel Rods: Cable management steel rod with 0.25" diameter. Black finish.

Model No.	Description	Offset	Width
CMR	Straight rod	---	19.00"
CMR2	Offset rod	1.50"	19.00"
CMR4	Offset rod	4.00"	19.00"

Flex-Clip Panels: 16-ga. steel panel with plastic flex-clips that rotate individually for horizontal or vertical cable management. Optional steel D-rings on ends for open frame data racks extend beyond rack width for vertical routing. Black finish.

Model No.	Description	D-rings on Ends	Panel Width	Width w/D-rings
CMC-1HV	1U panel, flex-clips	---	19.00"	19.00"
CMCD-1HV	1U panel, flex-clips	2	19.00"	20.26"

D-Ring Panels: 16-ga. steel panel with D-rings welded along center and optional D-rings on ends for open frame data racks to route cables vertically (end D-rings extend beyond rack width). For localized cable routing, a single D-ring on a 2U bracket punched on EIA. spacing is also available. Black finish.

Model No.	Description	D-rings on Ends	Panel Width	Width w/D-rings
CMD-1H	1U panel, D-rings	---	19.00"	19.00"
CMD-1HV	1U panel, D-rings	2	19.00"	20.25"
CMD-2H	2U panel, D-rings	---	19.00"	19.00"
CMD-2HV	2U panel, D-rings	2	19.00"	20.25"
CMD-2V	2U D-ring on bracket	---	0.875"	---

Slotted Panels: 16-ga. steel panel with flange and slots for cable lacing. Black finish.

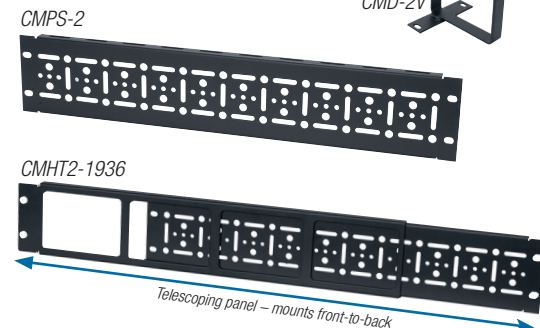
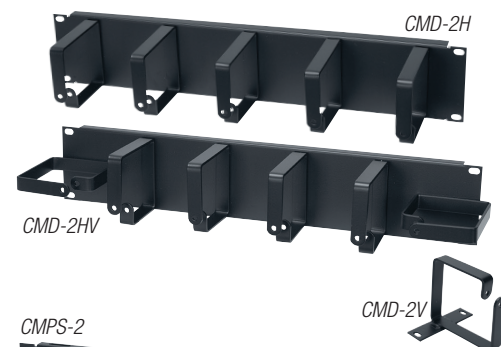
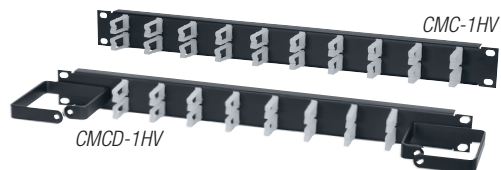
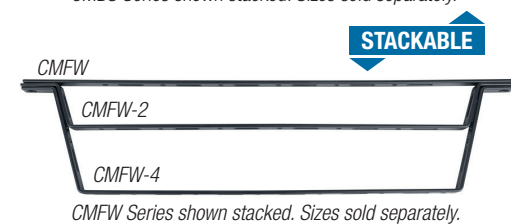
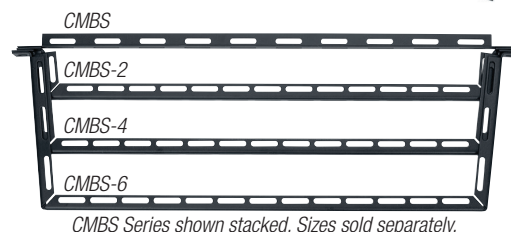
Model No.	Description	Width
CMPS-1S *	1U slotted panel	19.00"
CMPS-2S *	2U slotted panel	19.00"

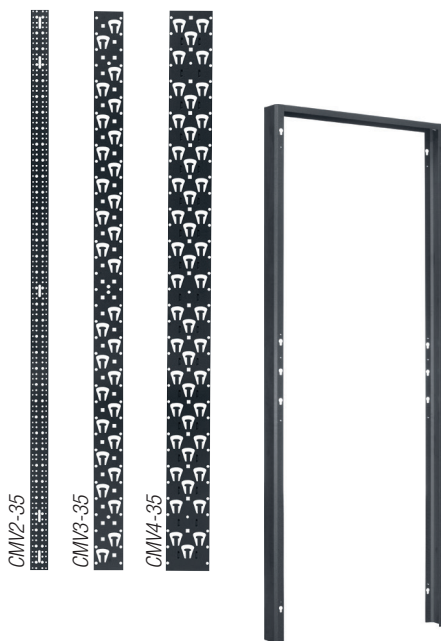
* Available in multi-pack carton. See spec sheet for details.

● **Telescoping Panels:** 18-ga. steel panel with flange extends to mount front-to-back within a rack, providing a versatile solution for wire and cable management. Black finish.

Model No.	Description	Extension
CMHT1-1730	1U telescoping panel	17.00" - 30.00"
CMHT2-1936	2U telescoping panel	19.00" - 36.00"

● Closeout





VERTICAL-MOUNT

Vertical Panels: Steel panel with multiple lacing slots provides vertical-mount cable management solution. 2"W panels are flat 11-ga. steel; other widths are 16-ga. steel with flanges. Black finish.

Model No.	Height	Width	Model No.	Height	Width
CMV2-18	18U	2.00"	CMV5-24	24U	4.75"
CMV2-35	35U	2.00"	CMV5-35	35U	4.75"
CMV2-44	44U	2.00"	CMV5-40	40U	4.75"
CMV3-12	12U	3.25"	CMV5-44	44U	4.75"
CMV3-24	24U	3.25"			
CMV3-35	35U	3.25"			
CMV3-40	40U	3.25"			
CMV3-44	44U	3.25"			

Cable Chase: 16-ga. steel cable chase for select racks provides space for wiring between racks or at the end of a multi-bay configuration. Includes bolt-on front, rear and top plus joining hardware. Top has compound knockouts (2"-1"). Black finish. Ships unassembled.

Model No.	Height	Channel Depth	Overall Depth	For Rack Series (Depth)
LCC4-4427	44U	4.00"	27.00"	LGR (27"D)
LCC4-4432	44U	4.00"	32.00"	LGR (32"D)
LCC4-4436	44U	4.00"	36.00"	LGR (36"D)
LCC4-4442	44U	4.00"	42.00"	LGR (42"D)
LXR-4421CC3	44U	3.00"	21.94"	LXR, LVR (21"D)
LXR-4426CC3	44U	3.00"	27.19"	LXR, LVR (26.25"D)

Vertical Cable Duct with Cover: ABS UL94V-0 plastic single sided finger duct is designed for high-density cable management using less area than traditional cable managers. Flexible fingers maintain proper bend radius to help protect against kinks/snags. Rounded edge holes route cables front-to-rear or rear-to-front, as needed. Black finish. Includes removable protective cover.

Model No.	Height	Depth	Width	Width with Cover
VCD-45	45U	6.5"	4.9"	5.5"

Quick-Install Cable Manager: Heavy-duty molded nylon plastic designed to stabilize and secure medium to large cable bundles in Lowell two-post (CR2P and NR2P series) and four-post (NR4P series) racks. With a quarter-turn (left or right) ring is positioned to secure vertical or horizontal cable runs. Black finish.

Model No.	Description
CMQ-10	Diamond-shaped cable management ring, set of 10

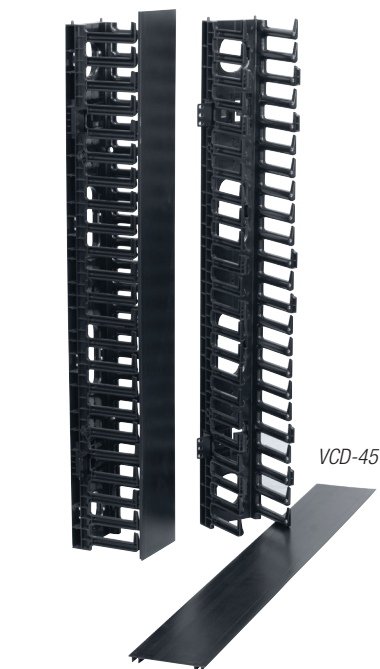
CABLING AIDS

Bushings: Plastic bushings snap into access holes along the (rear) vertical sides of LGR and LSGR Series gangable racks to protect cables. Black.

Model No.	Description
LGRB-12	Plastic bushings, set of 12

Cable Wraps: Velcro cable wraps to organize cables and hold them out of the way during installation. Maximum bundle diameter 1.75". Each wrap measures approximately 8" x 0.5".

Model No.	Description
VCW-12	Cable wraps, set of 12



CABLE LADDERS & ACCESSORIES

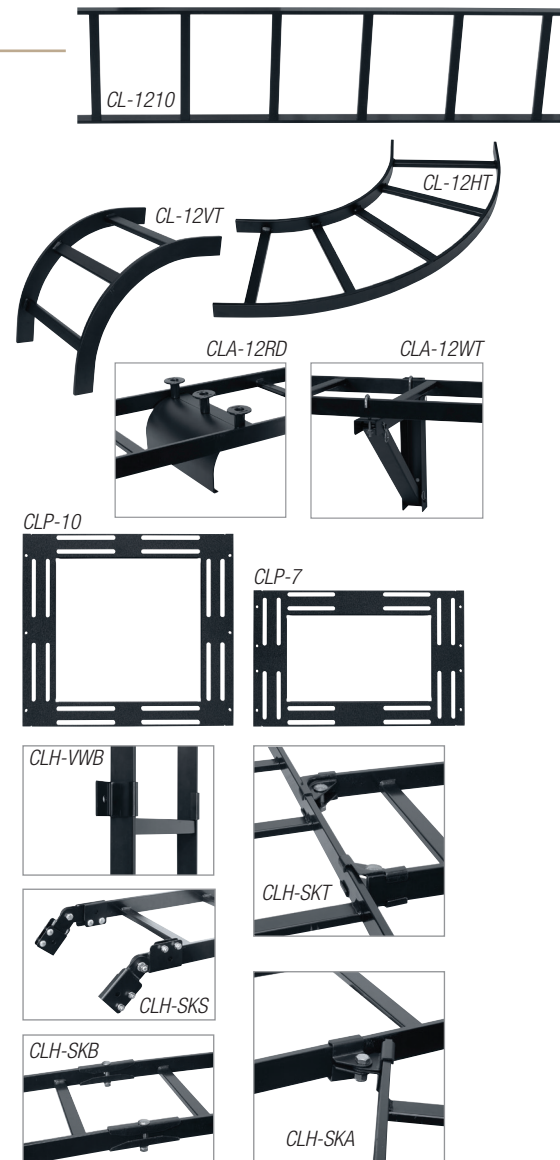
Cable Ladders: An assortment of cable ladders and accessories help organize and streamline installations. Black finish. *NOTE: Be sure to order rack adaptor panels to secure ladders to the rack.*

Model No.	Description	Weight	Function
CL-1210	Straight ladder – 12"W x 10'L (approx.)	24.47 lbs.	Straight section
CL-12HT	Horizontal turn ladder – 12"W	8.05 lbs.	90 degree turn with minimum cable bend radius
CL-12VT	Vertical turn ladder (I/O bend) – 12"W	4.8 lbs.	Changes direction of cable ladder
CLA-12RD	Cable radius drop – 12"W	1.90 lbs.	Allows cable exit with proper bend radius
CLA-12WA	Wall angle bracket – 12"W	1.96 lbs.	Provides perpendicular wall support for cable ladder
CLA-12WT	Wall triangle bracket – 12"W	4.15 lbs.	Provides wall support (400 lbs. static load) for cable ladder
CLA-12RRP	Relay rack plate kit – 12"W	3.12 lbs.	Secures cable ladder to top of 3" channel relay rack
CL-1810	Straight ladder – 18"W x 10'L (approx.)	27.75 lbs.	Straight section
CL-18HT	Horizontal turn ladder – 18"W	10.50 lbs.	90 degree turn with minimum cable bend radius
CL-18VT	Vertical turn ladder (I/O bend) – 18"W	5.6 lbs.	Changes direction of cable ladder
CLA-18RD	Cable radius drop – 18"W	2.84 lbs.	Allows cable exit with proper bend radius
CLA-18WA	Wall angle bracket – 18"W	2.70 lbs.	Provides perpendicular wall support for cable ladder
CLA-18WT	Wall triangle bracket – 18"W	5.92 lbs.	Provides wall support (400 lbs. static load) for cable ladder
CLA-18RRP	Relay rack plate kit – 18"W	4.20 lbs.	Secures cable ladder to top of 3" channel relay rack

ADDITIONAL HARDWARE

CLP-7	Rack adaptor panel, 7U	4 lbs.	Mounts cable ladder to 7U opening in rack top
CLP-10	Rack adaptor panel, 10U	4 lbs.	Mounts cable ladder to 10U opening in rack top
CLH-SK46	Stand-off elevation kit (4"-6")	12 lbs.	Elevates cable ladder above rack (4"-6")
CLH-JB3	J-bolt kit, 5/16" x 3"	0.31 lbs.	Holds cable ladder to rack
CLH-VWB	Vertical wall bracket	0.56 lbs.	Anchors cable ladder to wall
CLH-CK	Ceiling-mount kit	0.88 lbs.	Suspends cable ladder from ceiling
CLH-FB	Floor-mount brackets	3.22 lbs.	Mounts cable ladder to floor
CLH-SKB	Butt splice kit	0.47 lbs.	Fastens cable ladder sections end-to-end
CLH-SKS	Swivel / adjustable splice kit	1.90 lbs.	Fastens cable ladder sections providing adjustable bend
CLH-SKT	T-junction bracket kit	0.68 lbs.	Fastens cable ladder sections at 90 degree intersection
CLH-SKA	Adjustable splice kit (special)*	2 lbs.	Fastens cable ladder sections creating horizontal intersection
CLH-GSK	Grounding strap kit	0.25 lbs.	Provides grounding across cable ladder
CLH-EC	Ladder end caps (1 pr.)	0.35 lbs.	Covers end of cable ladder

* Installer may cut ladder ends at special angles to fit around an obstacle



THERMAL MANAGEMENT

FAN PANELS WITH UNIVERSAL POWER SUPPLY

FDC Series: Super quiet fans with universal (100–240VAC) input voltage, 6-ft. cord and four plug adaptors for North America, Central Europe, the U.K. and Australia/New Zealand/South Pacific. Includes thermostat probe which increases and decreases fan speed as temperature reaches set points. UL Listed power supply. Black finish.

Model No.	VAC	Description	Qty. Fans	Fan Diameter	Total Airflow	Noise Rating	Thermo Probe
FDC2-2T	100-240	19"W x 2U panel	2	3.15"	52cfm	26dBA	Yes
FDC4-2T	100-240	19"W x 2U panel	4	3.15"	104cfm	29dBA	Yes
FDC4-1HR	100-240	10.375"W x 1U	4	1.57"	36cfm	38dBA	---
FDC4-1HRT	100-240	10.375"W x 1U	4	1.57"	36cfm	38dBA	Yes

FDC1 Fan Kit Series: STAND-ALONE fan same as FDC Series above. MASTER FAN is similar to the stand-alone unit but with an additional power output, which enables it to connect/control a servant fan. SERVANT FAN works only with a master fan. Instead of a power supply, the servant fan features a power input with 8 ft. extension. It also features a power output to connect to another servant fan if desired. Fans mount anywhere along Lowell's rack vents. Black finish.

Model No.	VAC	Description	Qty. Fans	Fan Diameter	Total Airflow	Noise Rating	Thermo Probe
FDC1-KITT	100-240	Stand-alone fan kit	1	4.70"	73cfm	33dBA	Yes
FDC1-KITT-MS	100-240	Master and servant fan kit	2	4.70"	73cfm	33dBA	Yes
OPTIONS							
FDC1-KIT-S *	---	Additional servant fan	1	4.70"	73cfm	33dBA	---

* Works only with a master fan





FW3-3



FW-FF



FW1-KIT



FW2-KITT-VB



FT1-7



BDC4-1



KOP-B



FTC-1

MVB



WHISPER FAN PANELS

FW Series: Whisper fans in a 19" panel, rear door panel, or single fan kit. The fan kits mount anywhere along vents in select Lowell racks. Choose standard cord (Std.), or thermo-cord (Thermo) which has a built in thermostat to control fan activation. Black finish.

Model No.	VAC	Description	Qty. Fans	Fan Diameter	Total Airflow	Noise Rating	Cord
FW2-3	120	19"W x 3U panel	2	4.70"	100cfm	31dBA	Std.
FW2-3T	120	19"W x 3U panel	2	4.70"	100cfm	31dBA	Thermo
FW3-3	120	19"W x 3U panel	3	4.70"	150cfm	33dBA	Std.
FW3-3T	120	19"W x 3U panel	3	4.70"	150cfm	33dBA	Thermo
FW4-7	120	19"W x 7U panel	4	4.70"	200cfm	34dBA	Std.
FW4-7T	120	19"W x 7U panel	4	4.70"	200cfm	34dBA	Thermo
FW2-RD	120	Rear door panel	2	4.70"	100cfm	31dBA	Std.
FW2-RDT	120	Rear door panel	2	4.70"	100cfm	31dBA	Thermo
FW1-KIT	120	Single fan kit	1	4.70"	50cfm	28dBA	Std.
FW1-KITT	120	Single fan kit	1	4.70"	50cfm	28dBA	Thermo

OPTIONS

FW-FF Optional fan filter for whisper fans

FW2 Thermal Management Kit: Includes two whisper fans with guards, and set of three magnetic vent blockers. Choose standard cord or thermo-cord with built in thermostat. Black finish. For rack series: LWR.

Model No.	VAC	Description	Qty. Fans	Fan Diameter	Total Airflow	Noise Rating	Cord
FW2-KIT-VB	120	Thermal management kit for LWR Series	2	4.70"	50cfm	28dBA	Std.
FW2-KITT-VB	120	Thermal management kit for LWR Series	2	4.70"	50cfm	28dBA	Thermo

TURBO FAN PANELS

FT1-7 Series: Single turbo fan in 16-ga. steel 19" panel provides powerful cooling for rackmounted equipment. Includes fan guards. Choose standard cord or thermo-cord. Black finish.

Model No.	VAC	Description	Qty. Fans	Fan Diameter	Total Airflow	Noise Rating	Cord
FT1-7	115	19"W x 7U panel	1	10.00"	550cfm	50.8dBA	Std.
FT1-7T	115	19"W x 7U panel	1	10.00"	550cfm	50.8dBA	Thermo

BLOWER FANS

BDC4 Series: Slim 1U rackmount panel with four blower fans. Optional thermostat-probe automatically activates/deactivates fans according to ambient temperature. Black finish.

Model No.	VDC	Description	Blower Qty.	Blower Diameter	Total Airflow	Noise Rating	Thermo-Probe
BDC4-1	12	19"W x 1U panel	4	3.50"	90cfm	32dBA	---
BDC4-1T	12	19"W x 1U panel	4	3.50"	90cfm	32dBA	Yes

KOP-B Series: 9.625" panel with dual blower fans replaces rear KO panel in most Lowell racks (see specs). Optional thermostat-probe automatically activates/deactivates fans according to ambient temperature. Black finish.

Model No.	VDC	Description	Blower Qty.	Blower Diameter	Total Airflow	Noise Rating	Thermo-Probe
KOP-B	12	9.625"W panel	2	3.50"	45cfm	29dBA	---
KOP-BT	12	9.625"W panel	2	3.50"	45cfm	29dBA	Yes

RACK THERMOSTAT

FTC-1: Thermostat controls rack fans for efficient operation. Features, 15A duplex receptacle, and 6-ft. cord. UL listed thermostat.

Model No.	VAC	Description	Temperature Range	Size
FTC-1	125	Fan thermostat	50 - 90°F (10 - 32°C)	10.00" x 3.00" x 3.00"

MAGNETIC VENT BLOCKERS

MVB Series: Magnetic strips cover rack vents to help direct airflow when fans are added for active thermal management. Field trimmable.

Model No.	Description of Quantity and Size	For Rack
MVBLGR	One (1) 19" x 1.5", one (1) 16.5" x 5.25"	LGR Series
MVBLWR	One (1) 19" x 1.5", two (2) 16.5" x 5.25"	LWR (19"D or 23"D)
MVBLWBR	One (1) 19" x 1.5", two (2) 27.0" x 5.25"	LWBR Series
MVB22	One (1) 19" x 1.5", three (3) 16.5" x 5.25"	LER (22"D)
MVB27	One (1) 19" x 1.5", one (1) 16.5" x 5.25", two (2) 21.0" x 5.25"	LER (27"D)
MVB32	One (1) 19" x 1.5", one (1) 16.5" x 5.25", two (2) 27.0" x 5.25"	LER (32"D)

MOBILE BASES

LMB Series: Base mounts inside rack frame creating a platform flush with bottom rack space—ideal for heavy equipment mounted in lowest rack position. Includes 3.00" swivel casters (non-locking) and hardware. Model numbers ending with "F" have special casters made to protect fine floors like wood, marble or tile. For rack series: LER, LFR, LGR.

Model No.	Depth	Width	Height	Material	Center Opening	Increases Rack Height	Total Load Capacity
LMB-27	26.75"	22.81"	3.00"	14-ga. Steel	13" x 11"	1.25"	1400 lbs.
LMB-32	31.75"	22.81"	3.00"	14-ga. Steel	13" x 16"	1.25"	1400 lbs.
LMB-36	35.75"	22.81"	3.00"	14-ga. Steel	13" x 20"	1.25"	1400 lbs.
LMB-42	41.75"	22.81"	3.00"	14-ga. Steel	13" x 26"	1.25"	1400 lbs.
LMB-27F	26.75"	22.81"	3.00"	14-ga. Steel	13" x 11"	1.50"	800 lbs.
LMB-32F	31.75"	22.81"	3.00"	14-ga. Steel	13" x 16"	1.50"	800 lbs.
LMB-36F	35.75"	22.81"	3.00"	14-ga. Steel	13" x 20"	1.50"	800 lbs.



LMB-27F

LMNB Series: Base mounts inside rack frame creating a platform flush with bottom rack space—ideal for heavy equipment mounted in lowest rack position. Includes 3.00" swivel casters (non-locking) and hardware. For rack series: LGNR, LGVR.

Model No.	Depth	Width	Height	Material	Center Opening	Increases Rack Height	Total Load Capacity
LMNB-27	26.75"	21.75"	3.00"	14-ga. Steel	13" x 11"	1.25"	1400 lbs.
LMNB-32	31.75"	21.75"	3.00"	14-ga. Steel	13" x 16"	1.25"	1400 lbs.
LMNB-36	35.75"	21.75"	3.00"	14-ga. Steel	13" x 20"	1.25"	1400 lbs.



LMNB-32

LMSB Series: Base mounts under rack frame. Casters are set to the perimeter to enhance stability of a loaded rack. Includes 3.00" swivel casters (two locking, two non-locking). Model ending with "FL" has special casters made to protect fine floors like wood, marble or tile. For rack series: LER, LFR, LGR (with 22" depth).

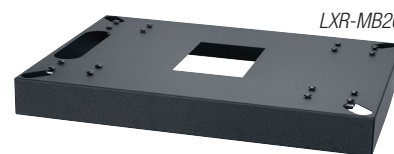
Model No.	Depth	Width	Height	Material	Center Opening	Increases Rack Height	Total Load Capacity
LMSB-22	21.88"	22.31"	4.08"	14-ga. Steel	10" x 5"	4.08"	1400 lbs.
LMSB-22FL	21.88"	22.31"	4.32"	14-ga. Steel	10" x 5"	4.32"	800 lbs.



LMSB-22

LXR-MB Series: Skirted base mounts under rack frame. Includes 3.00" non-locking swivel casters. Models ending with "F" have special casters made to protect fine floors like wood, marble or tile. For slim rack series: LXR and LVR (with 21" or 26.25" depth setting).

Model No.	Depth	Width	Height	Material	Center Opening	Increases Rack Height	Total Load Capacity
LXR-MB21	21.00"	19.00"	3.95"	16-ga. Steel	8" x 7.27"	3.95"	500 lbs.
LXR-MB26	26.00"	19.00"	3.95"	16-ga. Steel	8" x 5.38"	3.95"	500 lbs.
LXR-MB21F	21.00"	19.00"	4.06"	16-ga. Steel	8" x 7.27"	4.06"	620 lbs.
LXR-MB26F	26.00"	19.00"	4.06"	16-ga. Steel	8" x 5.38"	4.06"	620 lbs.

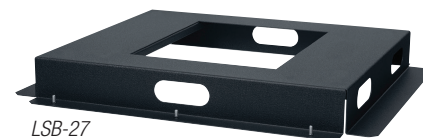


LXR-MB26

STATIONARY BASES

LSB Series: Base mounts inside rack frame creating a platform flush with bottom rack space—ideal for heavy equipment mounted in lowest rack position. Does not increase rack height. For rack series: LER, LFR, LGR.

Model No.	Depth	Width	Height	Material	Center Opening	Increases Rack Height	Total Load Capacity
LSB-22	20.75"	22.81"	3.00"	16-ga. Steel	13" x 5"	---	---
LSB-27	26.75"	22.81"	3.00"	16-ga. Steel	13" x 11"	---	---
LSB-32	31.75"	22.81"	3.00"	16-ga. Steel	13" x 16"	---	---
LSB-36	35.75"	22.81"	3.00"	16-ga. Steel	13" x 20"	---	---
LSB-42	41.75"	22.81"	3.00"	16-ga. Steel	13" x 26"	---	---



LSB-27

LSSB Series: Shallow base mounts inside rack frame creating a sub-floor 2.25" below bottom rack space—ideal to mount accessory devices on floor of installation. Does not increase rack height. For rack series: LER, LFR, LGR.

Model No.	Depth	Width	Height	Material	Center Opening	Increases Rack Height	Total Load Capacity
LSSB-22	20.39"	22.45"	0.75"	16-ga. Steel	13" x 5"	---	---
LSSB-27	25.39"	22.45"	0.75"	16-ga. Steel	13" x 5"	---	---



LSSB-22



RRD-7



RRN-24



RRNT-54



RRTF-7



RRT-7



LLR-RRT-10

MOUNTING RAILS

RRD Series: 11-ga. steel with black finish and round holes tapped 10-32. Printed RU scale facilitates set-up. Sold in pairs. Mounting hardware included. For rack series: LER, LFR, LGR, LPR, LSER, LSGR, LWBR, LWR.

Model No.	Height	Material	Mtg Hardware
RRD-7	7U	11-ga. Steel	Yes
RRD-10	10U	11-ga. Steel	Yes
RRD-12	12U	11-ga. Steel	Yes
RRD-14	14U	11-ga. Steel	Yes
RRD-16	16U	11-ga. Steel	Yes
RRD-18	18U	11-ga. Steel	Yes
RRD-21	21U	11-ga. Steel	Yes
RRD-24	24U	11-ga. Steel	Yes
RRD-35	35U	11-ga. Steel	Yes
RRD-40	40U	11-ga. Steel	Yes
RRD-44	44U	11-ga. Steel	Yes

RRN Series: 11-ga. steel with black finish and round holes tapped 10-32. Printed RU scale facilitates set-up. Sold in pairs. Mounting hardware included. For rack series: LGNR and LGVR.

Model No.	Height	Material	Mtg Hardware
RRN-24	24U	11-ga. Steel	Yes
RRN-37	37U	11-ga. Steel	Yes
RRN-40	40U	11-ga. Steel	Yes
RRN-44	44U	11-ga. Steel	Yes

RRNT-54: 11-ga. steel with black finish and round holes tapped 10-32. Sold in pairs. Mounting hardware included. For rack series LGTR.

Model No.	Height	Material	Mtg Hardware
RRNT-54	54U	11-ga. Steel	Yes

RRTF Series: 11-ga. steel with black finish and round holes tapped 10-32. Printed RU scale facilitates set-up. Sold in pairs. Mounting hardware included. For rack series: LDSR, LDTR, LWER, LWSR.

Model No.	Height	Material	Mtg Hardware
RRTF-7	7U	11-ga. Steel	Yes
RRTF-10	10U	11-ga. Steel	Yes
RRTF-12	12U	11-ga. Steel	Yes
RRTF-14	14U	11-ga. Steel	Yes
RRTF-16	16U	11-ga. Steel	Yes

RRT Series: Same as RRTF Series above but **mounting hardware not included**. For custom millwork.

Model No.	Height	Material	Mtg Hardware
RRT-7	7U	11-ga. Steel	---
RRT-10	10U	11-ga. Steel	---
RRT-12	12U	11-ga. Steel	---
RRT-14	14U	11-ga. Steel	---
RRT-16	16U	11-ga. Steel	---
RRT-21	21U	11-ga. Steel	---
RRT-24	24U	11-ga. Steel	---
RRT-28	28U	11-ga. Steel	---
RRT-30	30U	11-ga. Steel	---
RRT-32	32U	11-ga. Steel	---
RRT-40	40U	11-ga. Steel	---
RRT-46	46U	11-ga. Steel	---

LLR-RRT Series: 11-ga. steel with black finish and round holes tapped 10-32. Printed RU scale facilitates set-up. Sold in pairs. Mounting hardware included. For rack series: LLR.

Model No.	Height	Material	Mtg Hardware
LLR-RRT-10	10U	11-Gauge Steel	Yes
LLR-RRT-12	12U	11-Gauge Steel	Yes
LLR-RRT-16	16U	11-Gauge Steel	Yes
LLR-RRT-21	21U	11-Gauge Steel	Yes

LHR-RRT Series: 11-ga. steel with black finish and round holes tapped 10-32. Printed RU scale facilitates set-up. Sold in pairs. Mounting hardware included. For inner pull-out rack of rack series: LHR.

Model No.	Height	Material	Mtg Hardware
LHR-RRT-24	24U	11-ga. Steel	Yes
LHR-RRT-35	35U	11-ga. Steel	Yes
LHR-RRT-44	44U	11-ga. Steel	Yes



• **LVR-RRT Series:** 11-ga. steel with black finish and round holes tapped 10-32. Printed RU scale facilitates set-up. Sold in pairs. Mounting hardware included. For rack series: LXR, LVR.

Model No.	Height	Material	Mtg Hardware
LVR-RRT-16	16U	11-ga. Steel	Yes
LVR-RRT-40	40U	11-ga. Steel	Yes

• Closeout

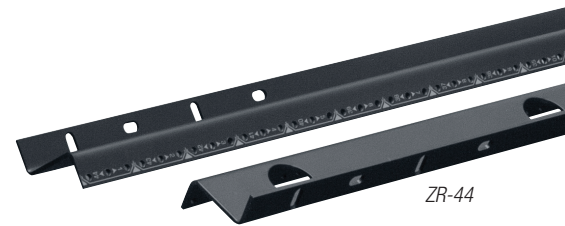
LWBR-BRR4: 11-ga. steel with black finish and round holes punched 10-32. Made to fit base of LWBR series rack, to add rear support to UPS mounted there (sold separately). Sold in pairs. 10-32 basket clips included.

Model No.	Height	Material	Mtg Hardware
LWBR-BRR4	4U	11-ga. Steel	Yes



Z-Rails: 11-ga. steel with black finish, tapped 10-32 holes with printed RU and vertical array of holes for cabling. Z-rails fit flush to standard mounting rails allowing devices to be side-mounted along the depth of a rack. Sold in pairs. Mounting hardware included. ZR-44 for rack series: LER, LGR. ZRN-44 for rack series: LGNR, LGVR.

Model No.	Height	Material	Mtg Hardware
ZR-44	44U	11-ga. Steel	Yes
ZRN-44	44U	11-ga. Steel	Yes



SPECIALTY TOPS & COVERS

LAMINATE TOP

LGT Series: Graphite Grey laminate-covered top features rubber edge molding. Mounting hardware included. For rack series LER, LPR, or LGR with appropriate depth.

Model No.	Depth	Width	Height	For Use With Rack Depth
LGT-22	24.06"	24.69"	1.00"	22.00"
LGT-27	29.06"	24.69"	1.00"	27.00"
LGT-32	34.06"	24.69"	1.00"	32"D

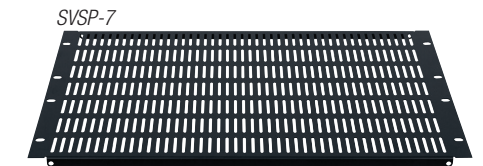
• Closeout



STEEL VENTED TOP PANEL

SVSP Series: 18-gauge steel slotted top panel for open top racks. Black finish.

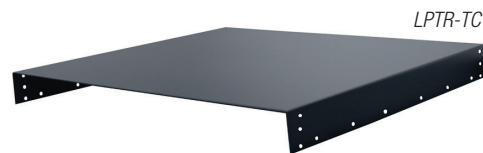
Model No.	Height	Width
SVSP-3	3U	19.00"
SVSP-4	4U	19.00"
SVSP-7	7U	19.00"



STEEL COVER

LPTR-TC: 16-gauge steel top for the LPTR Series Pull & Turn rack. Black finish.

Model No.	Description	Depth	Width	Height
LPTR-TC	Steel top cover	16.35"	18.81"	1.75"



HUB-CVR: Steel cover for use with HUB Series wall-mount brackets protects cables while serving as a convenient shelf. Black finish.

Model No.	Description	Depth	Width	Height
HUB-CVR	Steel top cover	6"	19.29"	1.13"



PFR-TC Series: Steel cover for use with PFR Series wall-mount racks (12" and 18" deep models). Black finish.

Model No.	Description
PFR-TC12	Steel top cover for 12"D PFR racks
PFR-TC18	Steel top cover for 18"D PFR racks





LFD Series

FRONT DOOR

LFD Series: Surface-mount front door. 180° swing. Mounts left or right. Field-changeable. 20"W x 1"D. Features recessed handle, keyed lock, beveled corners. Black finish. For rack series: LDTR, LER, LFR, LGR, LGNR, LGVR, LGTR, LPR, LSER, LSGR, LWBR, LWR, LWSR.

Model No.	Height	Door Style	Model No.	Height	Door Style	Model No.	Height	Door Style
LFD-7	7U	Solid Steel	LFD-7P	7U	Smoked Plexiglass	LFD-7FV	7U	Fully-Vented
LFD-10	10U	Solid Steel	LFD-10P	10U	Smoked Plexiglass	LFD-10FV	10U	Fully-Vented
LFD-12	12U	Solid Steel	LFD-12P	12U	Smoked Plexiglass	LFD-12FV	12U	Fully-Vented
LFD-14	14U	Solid Steel	LFD-14P	14U	Smoked Plexiglass	LFD-14FV	14U	Fully-Vented
LFD-16	16U	Solid Steel	LFD-16P	16U	Smoked Plexiglass	LFD-16FV	16U	Fully-Vented
LFD-18	18U	Solid Steel	LFD-18P	18U	Smoked Plexiglass	LFD-18FV	18U	Fully-Vented
LFD-21	21U	Solid Steel	LFD-21P	21U	Smoked Plexiglass	LFD-21FV	21U	Fully-Vented
LFD-24	24U	Solid Steel	LFD-24P	24U	Smoked Plexiglass	LFD-24FV	24U	Fully-Vented
LFD-35	35U	Solid Steel	LFD-35P	35U	Smoked Plexiglass	LFD-35FV	35U	Fully-Vented
LFD-37	37U	Solid Steel	LFD-37P	37U	Smoked Plexiglass	LFD-37FV	37U	Fully-Vented
LFD-40	40U	Solid Steel	LFD-40P	40U	Smoked Plexiglass	LFD-40FV	40U	Fully-Vented
LFD-44	44U	Solid Steel	LFD-44P	44U	Smoked Plexiglass	LFD-44FV	44U	Fully-Vented
LFD-54	54U	Solid Steel						

LXR-FD Series

LHR-FD Series



LXR-FD Series: Surface-mount front door for Lowell slim frame racks. Mounts left or right. Field-changeable. 20.50"W x 1.38"D. Features recessed handle, keyed lock. Black finish. For rack series: LXR, LVR.

Model No.	Height	Door Style	Model No.	Height	Door Style
LXR-FD8	8U	Solid Steel	LXR-FD8P	8U	Smoked Plexiglass
LXR-FD14	14U	Solid Steel	LXR-FD14P	14U	Smoked Plexiglass
LXR-FD22	22U	Solid Steel	LXR-FD22P	22U	Smoked Plexiglass
LXR-FD30	30U	Solid Steel	LXR-FD30P	30U	Smoked Plexiglass
LXR-FD38	38U	Solid Steel	LXR-FD38P	38U	Smoked Plexiglass
LXR-FD44	44U	Solid Steel	LXR-FD44P	44U	Smoked Plexiglass

LHR-FD Series: Surface-mount front door for Lowell host racks. Mounts left or right. Field-changeable. 21.75"W x 2.50"D. Features recessed handle, keyed lock. Black finish. For rack series: LHR.

Model No.	Height	Door Style	Model No.	Height	Door Style
LHR-FD24	24U	Solid Steel	LHR-FD24P	24U	Smoked Plexiglass
LHR-FD35	35U	Solid Steel	LHR-FD35P	35U	Smoked Plexiglass
LHR-FD44	44U	Solid Steel	LHR-FD44P	44U	Smoked Plexiglass

LWBR-BD4: Solid steel door for support base of LWBR rack series. Pivots down to open. Black finish.

Model No.	Height	Description
LWBR-BD4	4U	Solid steel door for support base of LWBR rack series

PFR-FP



FRONT COVER PANEL / PLATE

PFR-FP Series: Steel front panel. Black finish. For rack series: PFR.

Model No.	Height	Description
PFR-FP6	6U	Front panel for 6U PFR racks
PFR-FP8	8U	Front panel for 8U PFR racks

IWB(K)-CVR Series: Steel cover plate for in-wall boxes includes cable exits and vents. White finish. Cover mounts with pins. For in-wall box series: IWB, IWBK.

Model No.	Description
IWB-914-CVR	Steel cover plate mounts to in-wall box IWB-914 with two pins
IWB-1414-CVR	Steel cover plate mounts to in-wall box IWB-1414 with two pins
IWB-2214-CVR	Steel cover plate mounts to in-wall box IWB-2214 with two pins
IWBK-1414-CVR	Steel cover plate mounts to in-wall box IWBK-1414 with four pins

IWB-2214-CVR



IWBK-1414-CVR



DUAL-DOOR FRAME

LDDF Series: Steel frame surface-mounts to left or right hinge on rack front to accept two short doors in a Dutch door arrangement, enabling equipment to be secured in separate locations in a single rack installation. The 1"D frame can be added to an existing installation. Black finish. For rack series: LER, LFR, LGR, LGNR, LGVR, LPR, LSER, LSGR, LWBR, LWR. Order LFD Series doors separately.

Model No.	Height	For Use With
LDDF-21	21U	7U top door + 14U bottom door
LDDF-24	24U	10U top door + 14U bottom door
LDDF-35	35U	14U top door + 21U bottom door
LDDF-40	40U	16U top door + 24U bottom door
LDDF-44	44U	21U top door + 24U bottom door

REAR DOOR & ACCESS COVERS

LRD-FV Series: Recessed rear door. Mounts left or right with spring-loaded hinge pins. Field changeable, no drilling. Includes keyed lock. Optional thumb cam latch (TLK) for keyless entry available. Black finish. For rack series: LER, LGR, LSER, LSGR, LPR, LGNR, LGVR.

Model No.	Height	Door Style
LRD-35FV	35U	Fully-Vented
LRD-40FV	40U	Fully-Vented
LRD-44FV	44U	Fully-Vented

LRND-54V: Recessed rear door for tall, narrow racks. Mounts left or right with spring-loaded hinge pins. Field changeable, no drilling. Black finish. For rack series: LGTR.

Model No.	Height	Door Style
LRND-54FV	54U	Fully-Vented

LDTR-RAC Series: Rear access cover for racks in LDTR and LDSR series. Black finish.

Model No.	Height	Description
LDTR-RAC7	7U	Solid steel rear access cover with cable ports at bottom, opens from top with keyed lock
LDTR-RAC10	10U	Solid steel rear access cover with cable ports at bottom, opens from top with keyed lock
LDTR-RAC12	12U	Solid steel rear access cover with cable ports at bottom, opens from top with keyed lock
LDTR-RAC14	14U	Solid steel rear access cover with cable ports at bottom, opens from top with keyed lock
LDTR-RAC16	16U	Solid steel rear access cover with cable ports at bottom, opens from top with keyed lock

LHR-RAC Series: Rear access cover for LHR rack series. Black finish.

Model No.	Height	Description
LHR-RAC24	24U	Solid steel rear access cover opens from top with keyed lock
LHR-RAC35	35U	Solid steel rear access cover opens from top with keyed lock
LHR-RAC44	44U	Solid steel rear access cover opens from top with keyed lock

LXR-RAC Series: Rear access cover for LXR and LVR rack series. Black finish.

Model No.	Height	Description
LXR-RAC8	8U	Solid steel rear access cover, opens from top with keyed lock
LXR-RAC14	14U	Solid steel rear access cover, opens from top with keyed lock
LXR-RAC22	22U	Solid steel rear access cover, opens from top with keyed lock
LXR-RAC30	30U	Solid steel rear access cover, opens from top with keyed lock
LXR-RAC38	38U	Solid steel rear access cover, opens from top with keyed lock
LXR-RAC44	44U	Solid steel rear access cover, opens from top with keyed lock
LXR-RAC30V	30U	Steel rear access cover with top/bottom vents, opens from top with keyed lock

- Closeout

RDC Series: Recessed rear door with cable entry brush panel. Mounts left or right with spring-loaded hinge pins. Field changeable, no drilling. Includes keyed lock. Optional thumb cam latch (TLK) for keyless entry available. Black finish. For rack series: LER, LGR.

Model No.	Height	Description
RDC-35	34U	Solid steel rear door with cable entry brush panel, top and bottom vents, and keyed lock
RDC-40	40U	Solid steel rear door with cable entry brush panel, top and bottom vents, and keyed lock
RDC-44	44U	Solid steel rear door with cable entry brush panel, top and bottom vents, and keyed lock

LDDF-35



LDDF mounted to LER rack with a short LDF fully vented door on bottom, open top.

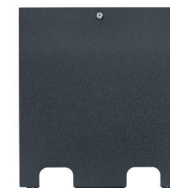
LRD-44FV



LRND-44FV



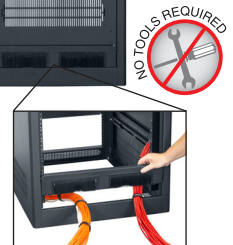
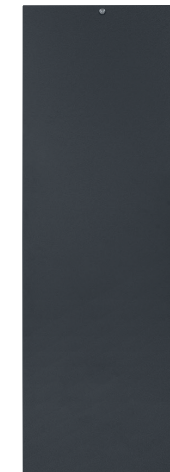
LDTR-RAC10

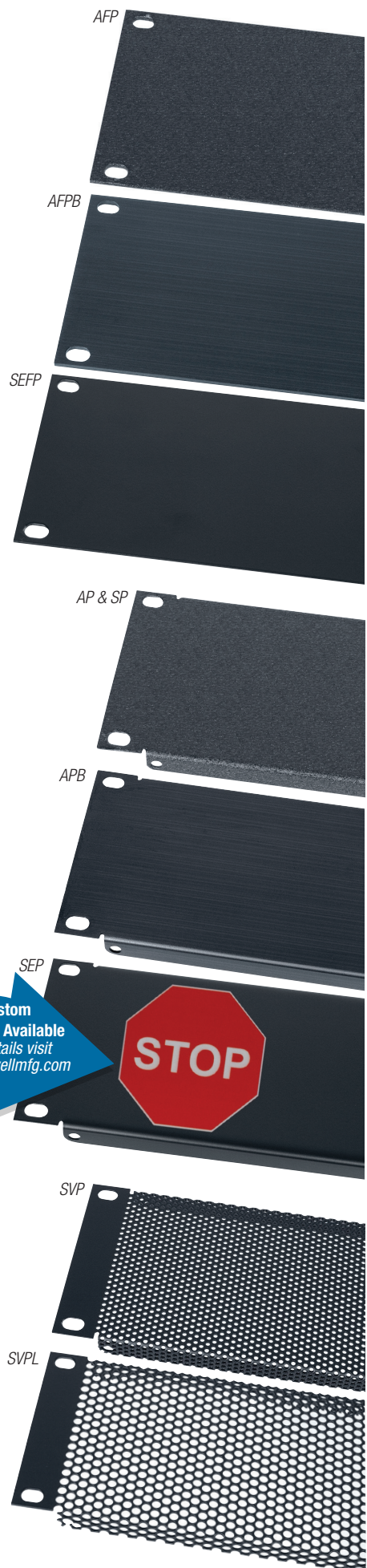


RDC-44



LHR-RAC35





Custom
Printing Available
for details visit
www.lowellmfg.com

BLANK PANELS

Flat: Aluminum or steel rackmount panel.

Model No.	Height	Width	Material	Finish
AFP-1*	1U	19.00"	0.125" Aluminum	Black Wrinkle
AFP-2*	2U	19.00"	0.125" Aluminum	Black Wrinkle
AFP-3*	3U	19.00"	0.125" Aluminum	Black Wrinkle
AFP-4*	4U	19.00"	0.125" Aluminum	Black Wrinkle
AFP-5	5U	19.00"	0.125" Aluminum	Black Wrinkle
AFP-6	6U	19.00"	0.125" Aluminum	Black Wrinkle
AFPB-1	1U	19.00"	0.125" Aluminum	Brushed Black Anodized
AFPB-2	2U	19.00"	0.125" Aluminum	Brushed Black Anodized
AFPB-3	3U	19.00"	0.125" Aluminum	Brushed Black Anodized
AFPB-4	4U	19.00"	0.125" Aluminum	Brushed Black Anodized
SEFP-1*	1U	19.00"	14-ga. Steel	Black Semi-Gloss
SEFP-2*	2U	19.00"	14-ga. Steel	Black Semi-Gloss
SEFP-3*	3U	19.00"	14-ga. Steel	Black Semi-Gloss
SEFP-4*	4U	19.00"	14-ga. Steel	Black Semi-Gloss
SEFP-5	5U	19.00"	14-ga. Steel	Black Semi-Gloss
SEFP-6	6U	19.00"	14-ga. Steel	Black Semi-Gloss

* Available in multi-pack carton. See spec sheet for details.

Formed: Aluminum or steel rackmount panel w/formed flange.

Model No.	Height	Width	Material	Finish
AP-1*	1U	19.00"	16-ga. Aluminum	Black Wrinkle
AP-2*	2U	19.00"	16-ga. Aluminum	Black Wrinkle
AP-3*	3U	19.00"	16-ga. Aluminum	Black Wrinkle
AP-4*	4U	19.00"	16-ga. Aluminum	Black Wrinkle
AP-5	5U	19.00"	16-ga. Aluminum	Black Wrinkle
AP-6	6U	19.00"	16-ga. Aluminum	Black Wrinkle
APB-1	1U	19.00"	0.050" Aluminum	Brushed Black Anodized
APB-2	2U	19.00"	0.050" Aluminum	Brushed Black Anodized
APB-3	3U	19.00"	0.050" Aluminum	Brushed Black Anodized
APB-4	4U	19.00"	0.050" Aluminum	Brushed Black Anodized
SEP-03	1/3U	19.00"	18-ga. Steel	Black Semi-Gloss
SEP-05	1/2U	19.00"	18-ga. Steel	Black Semi-Gloss
SEP-1*	1U	19.00"	18-ga. Steel	Black Semi-Gloss
SEP-2*	2U	19.00"	18-ga. Steel	Black Semi-Gloss
SEP-3*	3U	19.00"	18-ga. Steel	Black Semi-Gloss
SEP-4*	4U	19.00"	18-ga. Steel	Black Semi-Gloss
SEP-5	5U	19.00"	18-ga. Steel	Black Semi-Gloss
SEP-6	6U	19.00"	18-ga. Steel	Black Semi-Gloss
SEPH-1	1U	10.40"	18-ga. Steel	Black Semi-Gloss
SEPH-2	2U	10.40"	18-ga. Steel	Black Semi-Gloss
SP-1*	1U	19.00"	18-ga. Steel	Black Wrinkle
SP-2*	2U	19.00"	18-ga. Steel	Black Wrinkle
SP-3*	3U	19.00"	18-ga. Steel	Black Wrinkle
SP-4*	4U	19.00"	18-ga. Steel	Black Wrinkle
SP-5	5U	19.00"	18-ga. Steel	Black Wrinkle
SP-6	6U	19.00"	18-ga. Steel	Black Wrinkle
SP-7	7U	19.00"	18-ga. Steel	Black Wrinkle

* Available in multi-pack carton. See spec sheet for details.

VENT PANELS

Staggered Holes: Steel rackmount panel w/staggered hole vent pattern and formed flange. 35% or 63% open.

Model No.	Height	Width	Open Area	Material	Finish
SVP-1*	1U	19.00"	35%	18-ga. Steel	Black Semi-Gloss
SVP-2*	2U	19.00"	35%	18-ga. Steel	Black Semi-Gloss
SVP-3*	3U	19.00"	35%	18-ga. Steel	Black Semi-Gloss
SVP-4*	4U	19.00"	35%	18-ga. Steel	Black Semi-Gloss
SVPL-1*	1U	19.00"	63%	18-ga. Steel	Black Semi-Gloss
SVPL-2*	2U	19.00"	63%	18-ga. Steel	Black Semi-Gloss
SVPL-3*	3U	19.00"	63%	18-ga. Steel	Black Semi-Gloss
SVPL-4*	4U	19.00"	63%	18-ga. Steel	Black Semi-Gloss

* Available in multi-pack carton. See spec sheet for details.

Slotted Holes: Aluminum or steel rackmount panel w/slotted hole vent pattern and formed flange.

Model No.	Height	Width	Material	Finish
AVPB-1	1U	19.00"	0.050" Aluminum	Brushed Black Anodized
AVPB-2	2U	19.00"	0.050" Aluminum	Brushed Black Anodized
SVSP-1*	1U	19.00"	18-ga. Steel	Black Semi-Gloss
SVSP-2*	2U	19.00"	18-ga. Steel	Black Semi-Gloss
SVSPH-1	1U	10.40"	18-ga. Steel	Black Semi-Gloss
SVSPH-2	2U	10.40"	18-ga. Steel	Black Semi-Gloss

* Available in multi-pack carton. See spec sheet for details. NOTE: 3U, 4U and 7U SVSP panels available as speciality tops.

PUNCHED PANELS

Decorator Style Punches: Steel panel with flange is punched for decorator style devices. Includes hardware. Some panels include a label pocket (templates found online). Black semi-gloss finish.

Model No.	Height	Width	Punches	Label Area	Device Mount	Material
D3P-ID-1	1U	19.00"	3	Yes	Horizontal	16-ga. Steel
D3P-ID-2	2U	19.00"	3	Yes	Horizontal	16-ga. Steel
D4P-1	1U	19.00"	4	---	Horizontal	18-ga. Steel
D8P-ID-3	3U	19.00"	8	Yes	Vertical	18-ga. Steel
D9P-ID-3 *	3U	19.00"	9	Yes	Vertical	18-ga. Steel

OPTIONS

DBB-4	Blank filler plates for unused decorator style positions (4 pack)
DBB-50	Blank filler plates for unused decorator style positions (50 pack)
DBB-100	Blank filler plates for unused decorator style positions (100 pack)

* Panel can be used for up to four multi-gang devices mounted on alternate spacing. Confirm clearance for non-Lowell controls.

Wall Plate Punches: Steel panel punched for devices that have a 1-gang standard, non-removable wall plate that installs with two screws. Black semi-gloss finish. Spacing is not suitable for 2-gang devices.

Model No.	Height	Width	Punches	Device Mount	Material
SG6P-3	3U	19.00"	6	Vertical	16-ga. Steel

VC Punches: Steel panel punched for volume controls such as Lowell LVC Series. Includes plugs for unused positions and label pocket. Does not include device-mounting hardware. Note: Preloaded option available. See spec sheet.

Model No.	Height	Width	Punches	Label Area	Material
LVC8P-ID-2	2U	19.00"	8	Yes	16-ga. Steel

Neutrik® Punches: Steel panel with flange punched for Neutrik-D⁸ or Switchcraft-E⁸ connectors includes black and nickel-plated screws and label pocket. Black semi-gloss finish.

Model No.	Height	Width	Punches	Label Area	Material
N10P-ID-1	1U	19.00"	10	Yes	18-ga. Steel

SPECIALTY PANELS

Universal Connector Panel: Steel panel with rear flange/cable tray features laser-cut knockouts in a variety of sizes to mount a broad range of connectors including Neutrik and XLR. Black semi-gloss finish.

Model No.	Height	Width	Knockouts	Label Area	Material
UCP-1-16	1U	19.00"	16	No	18-ga. Steel

Two Handle Panel: Steel rackmount panel with chrome handles can be mounted in the lower third of a mobile or pull-out rack to improve maneuverability. Black semi-gloss finish. Handles protrude 1.20" from front of panel.

Model No.	Height	Width	Overall Depth	Material
SPH-1	1U	19.00"	1.70"	14-ga. Steel

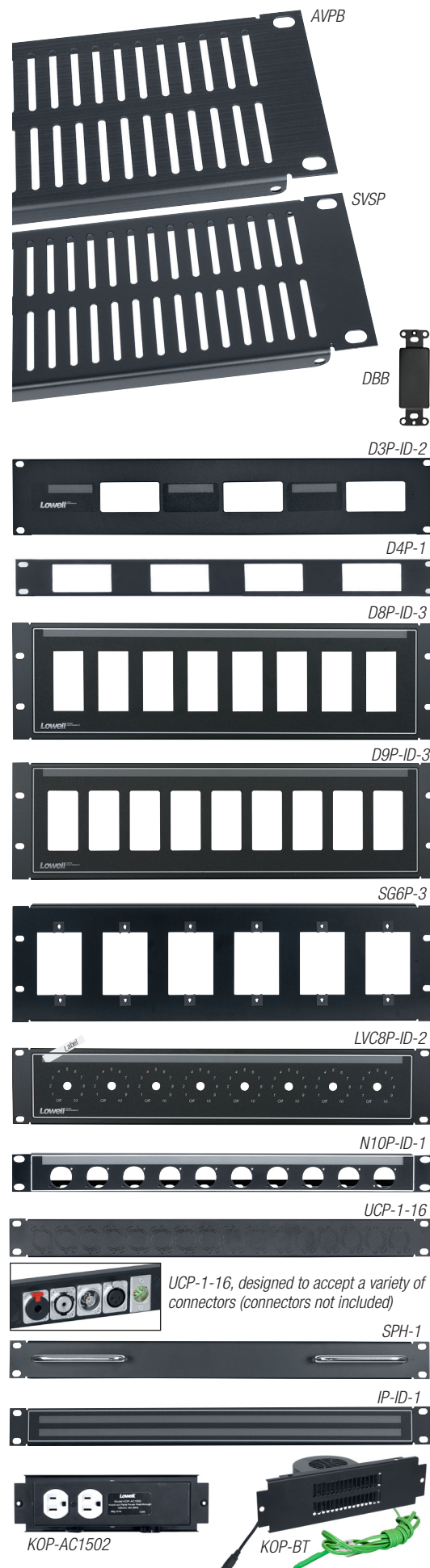
ID Panel: Steel panel has label pocket to identify equipment mounted above and below it. Black semi-gloss finish.

Model No.	Height	Width	Label Area	Material
IP-ID-1	1U	19.00"	Yes	18-ga. Steel

Knockout Panel w/Accessories: 10"W panel with fans, LED lights, or power outlets replaces rear KO panel in most racks (see spec sheet). Black semi-gloss finish.

Model No.	Description
KOP-L-SW	Steel panel w/two LED lights and button switch
KOP-L-PSW	Steel panel w/two LED lights and proximity (auto on/off) switch
KOP-L*	Add-on unit (steel panel w/two LED lights, no switch) *
KOP-B	Steel panel w/dual blower fans and power supply
KOP-BT	Steel panel w/dual blower fans, power supply, and thermostat probe
KOP-AC1502	Steel panel w/two 15A outlets and 6-ft. cord with entry ports

* Only works with KOP-L-SW or KOP-L-PSW





KOP-N

SPECIALTY PANELS [continued]

Knockout Panel: Pair of steel knockout panels punched for Neutrik-D^s connectors. For use in rack series: LER, LGR, LPR, LPPR, and LWR. Black wrinkle finish.

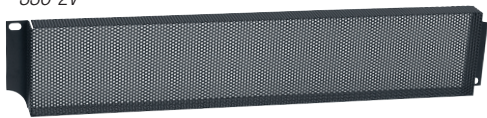
Model No.	Width (Each)	Overall Height	Material
KOP-N	9.69"	2.69"	16-ga. Steel

SECURITY COVERS

Vented: Steel security cover has flange and vented front that protrudes 1.5" to allow room for equipment knobs. Black semi-gloss finish.

Model No.	Height	Width	Material
SSC-1V	1U	19.00"	18-ga. Steel
SSC-2V	2U	19.00"	18-ga. Steel
SSC-3V	3U	19.00"	18-ga. Steel
SSC-4V	4U	19.00"	18-ga. Steel

SSC-2V



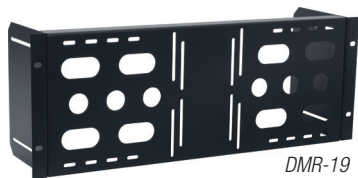
SSC-2P



Plexiglass: Security cover has steel frame with flange and smoked plexiglass front that protrudes 1.5" to allow room for equipment knobs. Black semi-gloss finish (frame).

Model No.	Height	Width	Material
SSC-1P	1U	19.00"	16-ga. steel frame with plexiglass front
SSC-2P	2U	19.00"	16-ga. steel frame with plexiglass front

DISPLAY MOUNT PANEL



DMR-19

DISPLAY MOUNT PANEL FOR RACKS

DMR-19: Adjustable-depth display mount panel for 19 inch EIA. two-post and four-post racks, is made to hold a flat panel display or LCD monitor that features a standard VESA 75mm or 100mm hole pattern.

Model No.	Depth	Width	Height	Load Capacity
DMR-19	5.20"	19"	6.97"	40 lbs.

RACK LIGHTING

PANELS, MAGNETIC & UTILITY LIGHTS

Rackmount Panels w/Light: Steel panels with bright white LEDs illuminate controls and workspace.

Model No.	Description	Height	Width	Light	Lumens	Switch
RPL-F	Panel w/hooded lights (mounts in standard panel space)	1U	19.00"	5 LEDs	525	Push Button
RPL-T3	Panel w/lights (mounts in rack top)	3U	19.00"	5 LEDs	525	Push Button

Rackmount Panel w/Hooded Light: Steel panels with hooded white light.

Model No.	Light	Height	Width	Light	Cord	Switch
U181RL-LC	Panel w/hooded light (mounts standard panel space)	1U	19.00"	6W Bulbs	15'	On/Off Rocker

Knockout Panel w/Lights: 10"W panel with LED lights replaces rear KO panel in most racks (see spec sheet).

Model No.	Description
KOP-L-SW	Steel panel w/two LED lights and button switch
KOP-L-PSW	Steel panel w/two LED lights and proximity (auto on/off) switch
KOP-L*	Add-on unit (steel panel w/two LED lights, no switch) *

* Only works with KOP-L-SW or KOP-L-PSW

Light Bar Kit: Magnetic-mount light bars are designed for rack interiors. Blue or white light. Rocker or proximity (auto on/off) switch activation.

Model No.	Width	Depth	Length	Power (per bar)	Lumens (per bar)	Light Color	Switch	For Min. Rack Ht.
RLB-KIT-16	5/8"	5/8"	16"	4.4W	273	White	Rocker	10U
RLB-KIT-16P	5/8"	5/8"	16"	4.4W	273	White	Proximity	10U
RLB-KIT-40	5/8"	5/8"	40"	12W	780	White	Rocker	24U
RLB-KIT-40P	5/8"	5/8"	40"	12W	780	White	Proximity	24U
RLB-KITB-40	5/8"	5/8"	40"	12W	780	Blue	Rocker	24U
RLB-KIT-60	5/8"	5/8"	60"	18W	1170	White	Rocker	35U
RLB-KIT-60P	5/8"	5/8"	60"	18W	1170	White	Proximity	35U

Utility Light: Work light with swivel hook and rear magnet provides movable lighting.

Model No.	Light	Lumens	Cord	Switch
RL-1B	High Power COB LED	500	6-ft. cord	On/Off w/indicator light

• Closeout



RPL-F



RPL-T3



KOP-L



RLB-KIT-40



RL-1B

SIDE PANELS

SDP Series: Solid steel side panels designed to fit most Lowell open frame gangable racks. Integral handles. Black finish. Sold in pairs. Increases rack width 1.25". *Note: Larger sizes have two pieces per side, for maneuverability.*

Model No.	Description	Material	For Rack Height	For Rack Depth
SDP-4022	Side panels, 1 pr. (1 panel per side)	18-ga. Steel	40U	22"
SDP-4422	Side panels, 1 pr. (1 panel per side)	18-ga. Steel	44U	22"
SDP-2427	Side panels, 1 pr. (1 panel per side)	18-ga. Steel	24U	27"
SDP-3527	Side panels, 1 pr. (1 panel per side)	18-ga. Steel	35U	27"
SDP-3732	Side panels, 1 pr. (1 panel per side)	18-ga. Steel	37U	27"
SDP-4027	Side panels, 1 pr. (1 panel per side)	18-ga. Steel	40U	27"
SDP-4427	Side panels, 1 pr. (1 panel per side)	18-ga. Steel	44U	27"
SDP-2432	Side panels, 1 pr. (1 panel per side)	18-ga. Steel	24U	32"
SDP-3532	Split side panels, 1 pr. (2 panels per side)	18-ga. Steel	35U	32"
SDP-3732	Split side panels, 1 pr. (2 panels per side)	18-ga. Steel	37U	32"
SDP-4032	Split side panels, 1 pr. (2 panels per side)	18-ga. Steel	40U	32"
SDP-4432	Split side panels, 1 pr. (2 panels per side)	18-ga. Steel	44U	32"
SDP-5432	Split side panels, 1 pr. (2 panels per side)	18-ga. Steel	54U	32"
SDP-4036	Split side panels, 1 pr. (2 panels per side)	18-ga. Steel	40U	36"
SDP-4436	Split side panels, 1 pr. (2 panels per side)	18-ga. Steel	44U	36"
SDP-5436	Split side panels, 1 pr. (2 panels per side)	18-ga. Steel	54U	36"
SDP-4042	Split side panels, 1 pr. (2 panels per side)	18-ga. Steel	40U	42"
SDP-4442	Split side panels, 1 pr. (2 panels per side)	18-ga. Steel	44U	42"

SDPN Series: Solid steel side panels designed to fit four-post racks. Integral handle(s). Black finish. Sold in pairs, split for maneuverability. For rack series: NR4P. Increases rack width 1.25".

Model No.	Description	Material	For Rack Height	For Rack Depth
SDPN-4530	Split side panels, 1 pr. (2 panels per side)	18-ga. Steel	45U	30"
SDPN-4536	Split side panels, 1 pr. (2 panels per side)	18-ga. Steel	45U	36"

SDV Series: Steel side panels designed to fit slim frame gangable racks. Vented top and bottom. Integral handle(s). Black finish. Sold in pairs. For rack series: LXR, LVR (set to appropriate depth). Increases rack width 1.25".

Model No.	Description	Material	For Rack Height	For Rack Depth
SDV-821	Side panel w/integral handle, 1 pr.	18-ga. Steel	8U	21"
SDV-1421	Side panel w/integral handle, 1 pr.	18-ga. Steel	14U	21"
SDV-2221	Side panel w/integral handle, 1 pr.	18-ga. Steel	22U	21"
SDV-3021	Side panel w/integral handle, 1 pr.	18-ga. Steel	30U	21"
SDV-3821	Side panel w/integral handle, 1 pr.	18-ga. Steel	38U	21"
SDV-4421	Side panel w/integral handle, 1 pr.	18-ga. Steel	44U	21"
SDV-826	Side panel w/integral handle, 1 pr.	18-ga. Steel	8U	26"
SDV-1426	Side panel w/integral handle, 1 pr.	18-ga. Steel	14U	26"
SDV-2226	Side panel w/integral handle, 1 pr.	18-ga. Steel	22U	26"
SDV-3026	Side panel w/two integral handles, 1 pr.	18-ga. Steel	30U	26"
SDV-3826	Side panel w/two integral handles, 1 pr.	18-ga. Steel	38U	26"
SDV-4426	Side panel w/two integral handles, 1 pr.	18-ga. Steel	44U	26"

SDP Series



SDP - Split side panel



SDPN - Split side panel



SDV Series panel with two integral handles.



SDV Series panel with integral handle and top/bottom vents





SCREWS & CAGE NUTS

Pilot Point Screws: 10-32 screws for threaded rails or cage nut applications include captive washers for time-saving installation. Black. Optional bits.

Model No.	Pilot Point Screw Type
RS-25	Phillips Truss Head (10-32 x 0.75", black zinc plated), 25 pc. bag
RS-100	Phillips Truss Head (10-32 x 0.75", black zinc plated), 100 pc. bag
RS-500	Phillips Truss Head (10-32 x 0.75", black zinc plated), 500 pc. jar
RSM-100	Premium Phillips Truss Head (10-32 x 0.75", 302 stainless steel, black oxide plated), 100 pc. bag
RSM-500	Premium Phillips Truss Head (10-32 x 0.75", 302 stainless steel, black oxide plated), 500 pc. jar
RSP-500	Phillips Finish Head (10-32 x 0.875", 5.1 hardness, black zinc plated w/painted head), 500 pc. jar
RSR-50	Robertson Square Head (10-32 x 0.875", black), 50 pc. bag
RSV-50	Torx Star Post Head (10-32 x 0.875", black), 50 pc. bag
OPTIONS	
RSR-BIT	Pin Drive Bit (Robertson Square Head, #2)
RSV-BIT	Pin Drive Bit (Torx Star Post Head, TT20)

Screws: Screws with separate washer for square-punched rails. Black.

Model No.	Screw Type
RS1224-100	Phillips Pan Head (12-24 x 0.787"), 100 pc. bag
RS6MM-100	Phillips Pan Head (6mm-m ⁶ , 1x2cm), 100 pc. bag

Cage Nuts: For use in square-punched rails. Black.

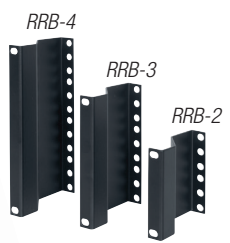
Model No.	Description
RCN1224-100	Cage Nuts (12-24), 100 pc. bag
RCN6MM-100	Cage Nuts (6mm), 100 pc. bag
RCN1032-100	Cage Nuts (10-32), 100 pc. bag



BRACKETS

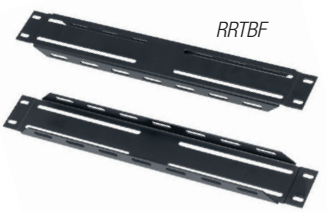
Rack Recessing Bracket: Steel bracket fits over tapped rails to recess equipment 3" from front of rack rail. Black. Sold in pairs. *Note: Brackets are not tapped.*

Model No.	Height	Material	Mtg Hardware
RRB-2	2U	16-ga. Steel	yes
RRB-3	3U	16-ga. Steel	yes
RRB-4	4U	16-ga. Steel	yes



Rail Conversion Bracket: Rail conversion bracket enables front rails (or optional rear rails) to change from fixed position to adjustable style. Sold in pairs. Black. For rack series: LDTR, LWER, LWSR. Includes hardware.

Model No.	Description
RRTBF	Rail conversion bracket



Side Support Bracket: Additional side support brackets for LXR Series rack. Sold in pairs. Includes hardware.

Model No.	Description
LXR-SB21	Side support brackets for 21"D LXR racks (or LVR Series racks assembled to 21"D)
LXR-SB26	Side support brackets for 26"D LXR racks (or LVR Series racks assembled to 26.25"D)



Chassis Bracket: Steel chassis brackets help support heavy equipment mounted in 19" racks (servers, amplifiers, UPS, etc.). Sold in pairs. Black. *Note: Requires two pairs of Lowell Z-rails (ZR or ZRN Series).*

Model No.	Description
CHB-20	20"D steel chassis bracket for use with z-rails
CHB-26	26"D steel chassis bracket for use with z-rails
CHB-30	30"D steel chassis bracket for use with z-rails



Mounting Bracket: Steel brackets facilitates mounting power strips and cable managers vertically in standard EIA racks. Sold in pairs. Black. For use with racks series: LRR, LXR, LVR.

Model No.	Description
PCMB-6	Mounting bracket for power strips, cable managers



MISCELLANEOUS

Casters: Standard or fine-floor (to protect wood, tile, and marble).

Model No.	Description	Total Load Capacity	For Rack Series
C2S	Standard swivel casters, 2" diameter, 4 non-locking	500 lbs. (for set)	LPSR, LDTR
LDR-C2SL	Standard swivel casters, 2" diameter, 2 non-locking / 2 locking	1200 lbs. (for set)	LDR
LXR-C3S	Standard swivel casters, 3" diameter, 4 non-locking	500 lbs. (for set)	LXR, LVR
LXR-C3SL	Standard swivel casters, 3" diameter, 2 non-locking / 2 locking	500 lbs. (for set)	LXR, LVR
LXR-C3SF	Fine-floor swivel casters, 3" diameter, 4 non-locking	500 lbs. (for set)	LXR, LVR
LXR-C3SFL	Fine-floor swivel casters, 3" diameter, 2 non-locking / 2 locking	500 lbs. (for set)	LXR, LVR



Ganging Hardware: 1/4-20" x 5/8" hex and kep nuts.

Model No.	Description
RGH-40	1/4-20" x 5/8" hex and kep nuts, 40 pc. bag



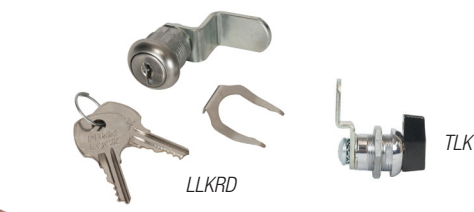
Grounding Bar: 0.125" solid copper grounding bar (2"W) tapped 10-32. Lacing slots, tie-down points.

Model No.	Description	Length
GBB-36	Copper bar	36.00"
GBB-72	Copper bar	72.00"



Latch: Thumb-turn cam latch replaces key lock cylinder for keyless entry to rear rack door.

Model No.	Description
TLK	Thumb-turn cam latch

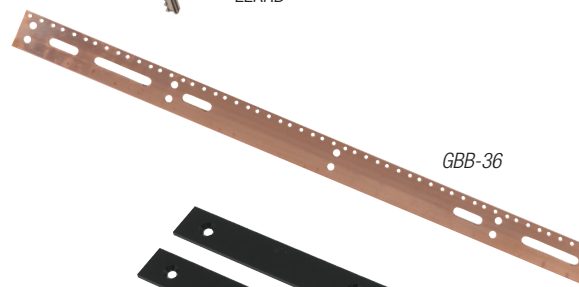


Rack Keys: Replacement key for front and rear doors.

Model No.	Description
LK-FD	Lowell front door keys (B399A), set of 2
LK-RD	Lowell rear door keys (B644A), set of 2

Rack Key & Lock Set: Alternate key and lock assembly for LDDF series dual-door system.

Model No.	Description
LLKRD	Key and lock assembly



Levelers: Heavy-duty leg levelers stabilize rack on uneven floors.

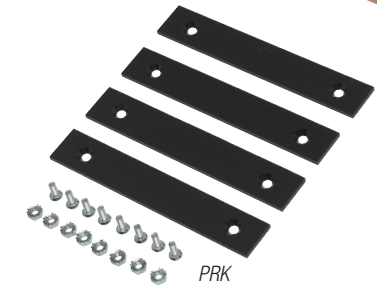
Model No.	Description
LL	Four leg levelers
ISO-LL	Four heavy duty leg levelers w/non-skid rubber base and threaded stem to electrically isolate rack

Isolation Pads: Electrically isolate rack gear from conductive surfaces.

Model No.	Description
ISO-P1	Eight (1-3/8" x 4") isolation strips with adhesive backing

Protective Runner Kit: Plastic glides protect surfaces when rack is placed in a slide-in application such as inside a cabinet or credenza. Black.

Model No.	Description
PRK	Four plastic glides for rack series LDSR, LHFR, LVR, LXR
LCR-18RK	Two plastic glides for 18"D LCR racks
LCR-16RK	Two plastic glides for 16"D LCR racks
LCR-20RK	Two plastic glides for 20"D LCR racks
LCR-23RK	Two plastic glides for 23"D LCR racks





Rackmount power strips include either universal brackets or clips and wire ties to mount vertically inside equipment racks. Shelf-mount power strips include screws to mount to rear flanges in Lowell US Series shelves.

FEATURES

- **Power Rating:** 15A or 20A (rating is per circuit)
- **Power Input:** 6 ft. or 12 ft. standard cord, 6 ft. detachable cord, 6 ft. flexible conduit (non-metallic) with pigtail leads, or pigtail leads at both ends of chassis.
- **Switch:** Power strips with an on/off switch activate and deactivate "switched" outlets via a rocker switch. Models without a switch provide continual power to outlets (as long as power is supplied to the unit itself).
- **Outlets:** NEMA 5-15R, NEMA 5-20R, or NEMA 5-20R IG (Insulated Ground)
- **Circuits:** Corded power strips are available with one circuit. Hardwired power strips are available with single or multiple (up to 10) circuits.
- **Surge Protection:** Some power strips include built-in surge suppression, as indicated in the chart below. Power strips with one star (★) protect against surges up to 6,500A; those with (★+) protect against surges up to 10,000A; those with two stars (★★) protect against surges up to 40,000A. **Advanced Surge Protection** against power surges up to 72,000A can be added as a separate device; see page 33.
- **Remote Power Control (RPC):** Power strips with RPC remote circuitry (classic connections) must be connected to a device (such as a sequencer or SPST switch) that can activate the power strip from a remote location. Power strips with RPC-P circuitry must connect to devices with remote control pass-through connections.



You can also design your own power strip placing 15A, 20A, or 30A power modules right where you need them. Visit www.lowellmfg.com

MODEL SUMMARY

Model No.	Circuits		NEMA Outlets 5-15R	NEMA Outlets 5-20R	Chassis	Power Input	Surge Protection	Misc.	Activation	Mtg. Hardware	NRTL
	Qty.	Power Rating									
ACS-1505-SW	1	15A	5sw	---	12"	6' Det. Cord	---	---	Rocker	Brackets	ETL
ACS-1505-SW-SD	1	15A	5sw	---	12"	6' Det. Cord	★★	---	Rocker	Brackets	ETL
ACS-1506	1	15A	6un	---	20"	6' Cord	★	---	---	Clips/Ties	UL
ACS-1506-WW	1	15A	6un	---	12"	6' Cord	---	---	---	Screws **	ETL
ACS-1507	1	15A	7un	---	12"	6' Det. Cord	---	---	---	Screws **	ETL
ACS-1510-RPC	1	15A	8sw + 2un	---	30"	6' Det. Cord	---	RPC	External *	Brackets	ETL
ACS-1512	1	15A	12un	---	32"	12' Cord	★	---	---	Clips/Ties	UL
ACS-1524	1	15A	24un	---	60"	12' Cord	★	---	---	Clips/Ties	UL
● ACS-1524-2C	2	15A	24un	---	70"	Pigtails (ends)	---	---	---	Clips/Ties	ETL
● ACS-1530-IEC	1	15A	30 (IEC C13)	---	60"	6' Det. Cord	---	---	---	Brackets	ETL
ACS-2006-3C-RPCP-HW	3	20A	---	4sw + 2un	30"	6' Flex-Conduit	★+	RPC-P	External *	Brackets	ETL
ACS-2012	1	20A	8un	4un	32"	12' Cord	★	---	---	Clips/Ties	UL
ACS-2010-RPC-HW	1	20A	---	8sw + 2 un	30"	6' Flex-Conduit	---	RPC	External *	Brackets	ETL
ACS-2014-HW	1	20A	---	14un	30"	6' Flex-Conduit	---	---	---	Brackets	ETL
ACS-2014-2C-HW	2	20A	8un	6un	30"	6' Flex-Conduit	---	---	---	Brackets	ETL
ACS-2018-5C-RPC-HW	5	20A	---	16sw + 2un	60"	6' Flex-Conduit	---	RPC	External *	Brackets	ETL
ACS-2018-5C-RPCP-HW	5	20A	---	16sw + 2un	60"	6' Flex-Conduit	★+	RPC-P	External *	Brackets	ETL
ACS-2020-6C-HW	6	20A	---	20un	60"	6' Flex-Conduit	---	---	---	Brackets	ETL
ACS-2020-IG-6C-HW	6	20A	---	20un (IG)	60"	6' Flex-Conduit	---	---	---	Brackets	ETL
ACS-2020-IG-10C-HW	10	20A	---	20un (IG)	60"	6' Flex-Conduit	---	---	---	Brackets	ETL
ACS-2024	1	20A	16un	8un	70"	12' Cord	★	---	---	Clips/Ties	UL
ACS-2024-2C	2	20A	---	24un	70"	Pigtails (ends)	---	---	---	Clips/Ties	ETL

* Items are required but not included. Order external activation switches separately. ** Screws are included to mount the power strip to rear notches in Lowell US Series rack shelves.

● Closeout

19" PANELS w/POWER or INTERFACE

Rackmount panels for EIA equipment racks measure 19 in. x 1.75 in. (1U) x 9 in. D, except as noted.



ACSPR-SEQ4-1509

FEATURES

- **Power Rating:** 15A or 20A
- **Power Input:** 6 ft. or 9 ft. standard cord, 9 ft. detachable cord, or 6 ft. flexible conduit (non-metallic) with pigtail leads.
- **Switch:** Most panels feature an on/off switch (rocker or key activation) that controls power to the "switched" outlets. "Unswitched" outlets remain on as long as power is supplied to the unit.
- **Outlets:** Panels feature five to nine NEMA 5-15R or NEMA 5-20R outlets. The typical set-up is one outlet in front with the rest in back. Various combinations of "switched" and "unswitched" outlets are available.
- **Surge Protection:** Some panels include built-in surge suppression, as indicated in the chart below. Panels with one star (★) protect against surges up to 30,000A; those with two stars (★★) protect against surges up to 40,000A; those with three stars (★★★) feature **Advanced Surge Protection** and protect against surges up to 72,000A.
- **Remote Power Control (RPC):** Panels with RPC circuitry (classic connections) can be connected to a device (such as a SPST switch) that can activate the panel from a remote location.
- **Sequencer:** Some models feature 4-step (SEQ4) or 6-step (SEQ6) power sequencing for time-delayed activation and deactivation of equipment plugged into the switched outlets. The 6-step sequencers include dry contact closures for remote power controls.
- **Over/Under:** Panels with over/under protection feature circuitry that turns the unit off when voltage exceeds specified parameters. The unit will start-up automatically when voltage returns to normal (within specified parameters).
- **Alarm Interface:** Panels with this feature have a rear terminal block to allow system switches to be overridden (for life safety system applications where fire code mandates an alarm interface).
- **Network Interface:** Panels with this feature provide quick network access from the front of the rack using pass-through connectivity ports (front RJ45 to rear RJ45; front USB-A to rear USB-B). Optional high speed charging ports (front or rear).
Note: Model SIP-1 provides interface ports only and does not include power outlets.

MODEL SUMMARY

Model No.	Power Rating	NEMA Outlets 5-15R	NEMA Outlets 5-20R	Power Input	Surge Protect.	Misc.	Activation	Alarm Interface	Network Interface	NRTL
ACHR-1505-S *	15A	2sw + 3un	---	6' Cord	★	---	Rocker	---	---	ETL
ACR-1505-SSI-RC	15A	5un	---	6' Cord	★★	Rear Charging Ports	---	---	Yes	ETL
ACR-1506-LTS	15A	6sw	---	9' Cord	★	White Light	Rocker	---	---	ETL
ACR-1507-GNLT	15A	2sw + 5un	---	9' Det. Cord	---	Gooseneck Light	Rocker	---	---	ETL
ACR-1507-HDLT	15A	2sw + 5un	---	9' Det. Cord	---	Night Vision Light	Rocker	---	---	ETL
ACR-1507-SSI-FC	15A	7un	---	6' Cord	★★	Front Charging Ports	---	---	Yes	ETL
ACR-1508-SHW	15A	8un	---	6' Flex-Conduit	★	---	---	---	---	ETL
ACR-1509-S	15A	3sw + 6un	---	9' Cord	★	---	Rocker	---	---	UL
ACR-159-S	15A	9sw	---	9' Cord	★	---	Rocker	---	---	UL
ACR-2009	20A	3sw + 2un	2sw + 2un	9' Cord	---	---	Rocker	---	---	ETL
ACR-209-S	20A	---	9sw	9' Cord	★	---	Rocker	---	---	UL
ACR-RPC-1508-SD	15A	6sw + 2un	---	9' Cord	★★	RPC	External**	Yes	---	ETL
ACR-SEQ4-1509	15A	6sw + 3un	---	9' Cord	---	SEQ(4) + RPC	Rocker	Yes	---	ETL
ACR-SEQ6-2009	20A	6sw + 3un	---	9' Cord	---	SEQ(6) + RPC	Rocker	Yes	---	ETL
ACSPR-1509	15A	5sw + 4un	---	9' Cord	★★★	---	Rocker	---	---	ETL
ACSPR-1509-VTE	15A	5sw + 4un	---	9' Cord	★★★	Over/Under	Rocker	---	---	ETL
ACSPR-2009	20A	3sw + 2un	2sw + 2un	9' Cord	★★★	---	Rocker	---	---	ETL
ACSPR-2009-VTE	20A	3sw + 2un	2sw + 2un	9' Cord	★★★	Over/Under	Rocker	---	---	ETL
ACSPR-RPC1-1509	15A	6sw + 3un	---	9' Cord	★★★	RPC + Over/Under	Rocker	Yes	---	ETL
ACSPR-RPC1-1509K	15A	6sw + 3un	---	9' Cord	★★★	RPC + Over/Under	Key	Yes	---	ETL
ACSPR-RPC1-2009	20A	6sw + 3un	---	9' Cord	★★★	RPC + Over/Under	Rocker	Yes	---	ETL
ACSPR-SEQ4-1509	15A	6sw + 3un	---	9' Cord	★★★	SEQ(4) + RPC	Rocker	Yes	---	ETL
ACSPR-SEQ4-1509K	15A	6sw + 3un	---	9' Cord	★★★	SEQ(4) + RPC	Key	Yes	---	ETL
ACSPR-SEQ6-2009	20A	6sw + 3un	---	9' Cord	★★★	SEQ(6) + RPC	Rocker	Yes	---	ETL
SIP-1	---	---	---	---	---	---	---	---	Yes	---

*ACHR-1505-S for Lowell Half Rack measures 10.38" x 7.25" x 1.75". ** Items are required but not included. Order external activation switches separately.



UNINTERRUPTIBLE POWER SUPPLIES

POWER DISTRIBUTION PRODUCTS



UPS LI-600, UPS9AC-1000, UPS9A-1000, UPSVLI-700-1 (top to bottom)

Uninterruptible power supplies (UPS) protect critical data and equipment while supplying clean, reliable network-grade power. Choose online, line interactive, or standby UPS with lead acid or lithium batteries.

SERIES:

- UPS8 Series:** LINE INTERACTIVE pure sine wave UPS ships with a 4-point rackmount rail kit and tower pedestals for versatile mounting options. This series features a smart LCD display, 99% high efficiency ECO mode, hot swappable battery, and auto restart. Includes 3-year limited warranty on electronics and battery (optional 5-year warranty available). UL, cUL, RoHS compliant.
- UPS9A Series:** ONLINE DOUBLE CONVERSION UPS in 2U chassis ships with a 4-point rackmount rail kit and tower pedestals. Features 98% ECO mode, hot swappable battery, LCD display, remote on/off, and fast recharge (up to 95% in 3 hours). Includes 3-year limited warranty on electronics and battery (optional 5-year warranty available). UL, cUL, RoHS, TAA compliant. A 1U model is also available - see spec sheet for information.
- UPS6Li Series:** COMPACT LIGHTWEIGHT STANDBY UPS with lithium-ion battery is ideal for protecting video walls, kiosks, gaming machines, point-of-sale equipment, and similar electronics. Sine wave (normal) or simulated sine wave (battery mode) waveform. This series offers 98% efficiency, and LiFePO4 batteries providing protections for up to 10 years or 2000 discharges. Features auto restart and Battery Management System (BMS). 350VA (200W) or 600VA (360W) power rating. Includes 5-year warranty on electronics and battery. UL-1778, cTUVus, FCC, RoHSCE, RoHS, TAA compliant.
- UPS9Li Series:** HIGH-PERFORMANCE ONLINE pure sine wave UPS combines lithium-ion batteries with the advanced power protection of online double conversion technology. This series features LiFePO4 batteries providing protections for up to 10 years or 2000 discharges, quick recharge (90 minutes to 90%), and battery management system (over-voltage, over-current, and over-temperature protection). Includes 4-point rail kit, and tower pedestals. 6-year full warranty on electronics and battery. UL, cUL, RoHS compliant.

INDIVIDUAL UPS PRODUCTS

Type	Model No.	Power Rating	Height	Mtg Hardware
LINE INTERACTIVE UPS - Lead Acid Batteries	UPS8-800	800VA (720W)	2U	4-pt rail kit + pedestals
	UPS8-1100 *	1100VA (990W)	2U	4-pt rail kit + pedestals
	UPS8-1500 *	1500VA (1350W)	2U	4-pt rail kit + pedestals
	UPS8-2000 *	2000VA (1800W)	2U	4-pt rail kit + pedestals
	UPS8-2200 *	2200VA (2000W)	2U	4-pt rail kit + pedestals
	UPS8-3000 *	3000VA (2700W)	2U	4-pt rail kit + pedestals
VALUE LINE INTERACTIVE UPS - Lead Acid Batteries	UPSV-700	700VA (420W)	2U	Rack ears
	UPSV-1000	1000VA (600W)	2U	Rack ears
	UPSV-1500	1500VA (900W)	2U	Rack ears
	UPSV-2000	2000VA (1200W)	2U	Rack ears
ONLINE DOUBLE CONVERSION UPS - Lead Acid Batteries	UPS9A-1000 *	1000VA (1000W)	2U	4-pt rail kit + pedestals
	UPS9A-1500 *	1500VA (1450W)	2U	4-pt rail kit + pedestals
	UPS9A-2000 *	2000VA (1930W)	2U	4-pt rail kit + pedestals
	UPS9A-3000 *	3000VA (2880W)	2U	4-pt rail kit + pedestals
	UPS9AC-1000	1000VA (800W)	1U	4-pt rail kit
STANDBY UPS - Lead Acid Batteries	UPSA6-850*	850VA (500W)	3.7"	---
COMPACT STANDBY UPS - Lithium-Ion Batteries	UPS6LI-350	350VA (200W)	1.25"	L-brackets
	UPS6LI-600 *	600VA (360W)	1.6"	L-brackets
LINE INTERACTIVE UPS - Lithium-Ion Batteries	UPSVLI-700-1	700VA (420W), 1 battery string	2U	Rackmount brackets (can convert to pedestal)
	UPSVLI-700-2	700VA (420W), 2 battery string	2U	Rackmount brackets (can convert to pedestal)
	UPSVLI-700-3	700VA (420W), 3 battery string	2U	Rackmount brackets (can convert to pedestal)
	UPSVLI-700-4	700VA (420W), 4 battery string	2U	Rackmount brackets (can convert to pedestal)
	UPSVLI-1000-1	1000VA (600W), 1 battery string	2U	Rackmount brackets (can convert to pedestal)
	UPSVLI-1000-2	1000VA (600W), 2 battery string	2U	Rackmount brackets (can convert to pedestal)
	UPSVLI-1500-1	1500VA (900W), 1 battery string	2U	Rackmount brackets (can convert to pedestal)
	UPSVLI-1500-2	1500VA (900W), 2 battery string	2U	Rackmount brackets (can convert to pedestal)
ONLINE DOUBLE CONVERSION UPS - Lithium-Ion Batteries	UPS9LI-1500 *	1500VA (1350W)	2U	4-pt rail kit + pedestals
	UPS9LI-2000 *	2000VA (1800W)	2U	4-pt rail kit + pedestals
	UPS9LI-3000 *	3000VA (2700W)	2U	4-pt rail kit + pedestals

* UPS bundled with select accessories, visit www.lowellmfg.com for details.

ACCESSORIES	Description	Mtg Hardware
UPS-RELAY	Dry contact relay card	---
UPS-SNMP	SNMP card	---
UPS-SNMP-EMP	Environment monitoring sensor	---
UPS-XBDM-20RCD	Bypass module with cord	---
UPS6-IEC-RA-CD	6' Cord w/right-angle plug for UPS6LI Series	---
UPS6-DIN	DIN rail-mount kit for UPS6LI Series	---
UPS6-SNMP	Web/SNMP card for UPS6LI-600 (only)	---
UPS6-SNMP-EMP	Environmental monitoring device for UPS6-SNMP card	---
UPSA6-SNMP-USB	SNMP card for UPSA6-850	---
UPS-XBP-36	EXPANSION BATTERY PACK for UPS9-1500	4-pt rail kit
UPS-XBP-36E	EXPANSION BATTERY PACK for UPS9-1500	4-pt rail kit
UPS-XBP-48	EXPANSION BATTERY PACK for UPS8-1500, UPS8-2000, UPS9-2000	4-pt rail kit
UPS-XBP-72	EXPANSION BATTERY PACK for UPS8-2200, UPS8-3000, UPS9-3000	4-pt rail kit
UPS-XBPA-36	EXPANSION BATTERY PACK for UPS9A-1500	4-pt rail kit
UPS-XBPA-36E	EXPANSION BATTERY PACK for UPS9A-1500	4-pt rail kit
UPS-XBPA-48	EXPANSION BATTERY PACK for UPS9A-2000	4-pt rail kit
UPS-XBPA-72	EXPANSION BATTERY PACK for UPS9A-3000	4-pt rail kit



DEVICES FOR CLASSIC CONNECTIONS

Combine remote power controls, power sequencers, and relays for an intrinsically safe, low-voltage way to control AC power to equipment at remote locations. With the exception of rackmount sequencers, which include their own SPST switch for activation, all devices will require an external trigger switch or connection to a device that has an activation trigger. (Order external switches separately.)

IMPORTANT TECH TIP

REMOTE DEVICES with CLASSIC CONNECTIONS are made for use with 3- or 4-wire conductors, although a few models have a single RJ45 jack for cat5/6 cable. Classic devices can be combined with each other and may not require a sequencer for activation. *Note: These devices are not interchangeable with "pass-through" devices on the following page. See spec sheets for more information.*

CLASSIC CONNECTIONS

Models include either a 6 ft. standard cord, 6 ft. detachable cord, 6 ft. flexible conduit (non-metallic) with pigtail leads for hardwired applications, or power supply with 6 ft. cable. Units are activated by contact closure (CC) and/or voltage trigger (VT) – see chart. All models have terminal strips; some models have a single RJ45 jack.

- Sequencers:** Classic power sequencers (SEQ Series) are available as stand-alone units or in rackmount panels, as listed in the chart below. Sequencers feature 4-step or 8-step time-delayed activation and deactivation of connected equipment (screwdriver-adjustable delay).
- Remote Power Controls (RPC):** Classic remote power controls (RPC Series) can be used alone or with a compatible relay or sequencer. An external trigger (ex. SPST switch or sequencer) is required for activation. A variety of outlets are available. Units with surge suppression protect against power surges up to 20,000A (★). ETL Listed.
- Relays:** Classic general purpose relays (RY Series) feature two or four double-pole double-throw (DPDT) relays. An external trigger is required for activation.
- Origins:** Assembled in the USA with US steel chassis and global components.



RPC-15



SEQ-8



RY-2A

MODEL SUMMARY FOR CLASSIC CONNECTION DEVICES

Model No.	Description	Style	Outlets	Power Input	Surge Protect.	Activation	Connections
SEQR-4	Sequencer (4-step) for time-delayed activation of connected equipment	Rackmount Panel	---	Power Supply	---	Rocker	TS
SEQR-4K	Sequencer (4-step) for time-delayed activation of connected equipment	Rackmount Panel	---	Power Supply	---	Key	TS
SEQR-8	Sequencer (8-step) for time-delayed activation of connected equipment	Rackmount Panel	---	Power Supply	---	Rocker	TS
SEQR-8K	Sequencer (8-step) for time-delayed activation of connected equipment	Rackmount Panel	---	Power Supply	---	Key	TS
SEQR-8RJ	Sequencer (8-step) for time-delayed activation of connected equipment	Rackmount Panel	---	Power Supply	---	Rocker	TS + RJ45
SEQ-4A	Sequencer (4-step) for time-delayed activation of connected equipment	Standalone	---	Power Supply	---	CC or VT *	TS
SEQ-8	Sequencer (8-step) for time-delayed activation of connected equipment	Standalone	---	Power Supply	---	CC *	TS
RPC-15	Remote power control for activating remote equipment	Standalone	(2) NEMA 15A	6' Cord	---	CC *	TS
RPC-15-S	Remote power control for activating remote equipment	Standalone	(2) NEMA 15A	6' Cord	★	CC *	TS
RPC-15-SCD-RJ	Remote power control for activating remote equipment	Standalone	(2) NEMA 15A	6' Cord	★	CC or VT *	TS + RJ45
RPC-15-U	Remote power control for activating remote equipment	Standalone	(2) IEC C13	(2) 6' Det. Cords	---	CC or VT *	TS
RPC-20-CD	Remote power control for activating remote equipment	Standalone	(2) NEMA 20A	6' Cord	---	CC or VT *	TS
RPC-20-SCD	Remote power control for activating remote equipment	Standalone	(2) NEMA 20A	6' Cord	★	CC or VT *	TS
RPC-20-SCD-RJ	Remote power control for activating remote equipment	Standalone	(2) NEMA 20A	6' Cord	★	CC or VT *	TS + RJ45
RPC-20-HW	Remote power control for activating remote equipment	Standalone	(2) NEMA 20A	6' Flex-Conduit	---	CC or VT *	TS
RPC-20-SHW	Remote power control for activating remote equipment	Standalone	(2) NEMA 20A	6' Flex-Conduit	★	CC or VT *	TS
RPC-30-SHW	Remote power control for activating remote equipment	Standalone	(1) Twistlock 30A	6' Flex-Conduit	★	CC or VT *	TS
RPC-3N1	Remote power control for activating remote equipment	Standalone	(8) NEMA 15A	6' Cord	---	CC *	TS
RPC-4CD	Remote power control for activating remote equipment	Rackmount	(8) NEMA 15A	6' Cord	---	CC *	TS
RY-2A	Module with 2 independent DPDT relays, 5A contact rating	Standalone	---	Power Supply	---	CC or VT *	TS
RY-4A	Module with 4 independent DPDT relays, 5A contact rating	Standalone	---	Power Supply	---	CC or VT *	TS

* Items are required but not included. Order external activation switches separately. Voltage triggers provided by other control systems. Det. Cord = Detachable Cord; TS = Terminal Strip; CC = Contact Closure; VT = Voltage Trigger

DEVICES WITH PASS-THROUGH CONNECTIONS

The pass-through series of remote power controls, relays, and sequencers were developed for fast, scalable installation, with two (pass-through) RJ45 jacks on each unit for quick connections using Cat5/Cat6 cable. Because the choice of sequencing step is made via a switch on each unit, you can easily scale the system up or down, or change the sequencing order, without having to rewire.

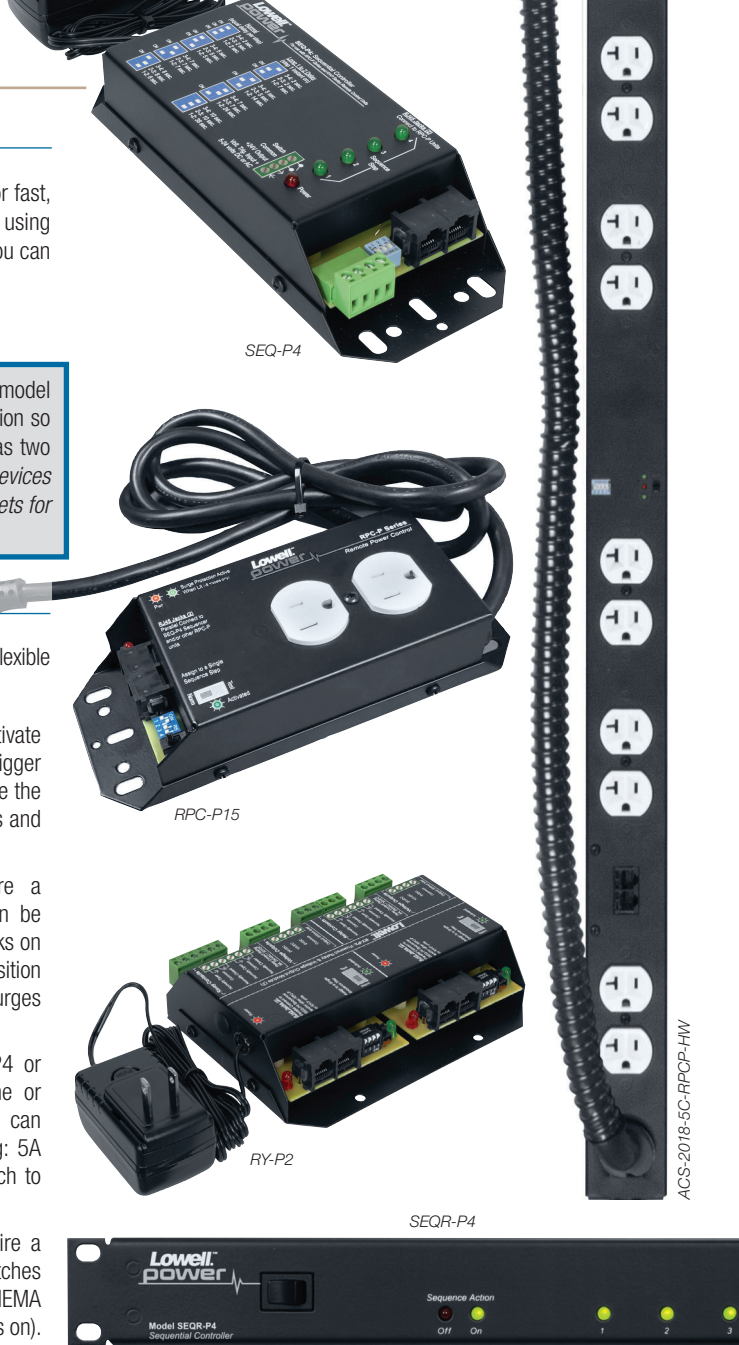
IMPORTANT TECH TIP

REMOTE DEVICES with PASS-THROUGH CONNECTIONS require a specific sequencer (model SEQ-P4 or SEQR-P4) for activation. Pass-through devices can be combined in any configuration so long as the first unit in a string connects to one of the specified sequencers. Each device has two (pass-through) RJ45 jacks and a DIP switch to select its sequencing position. *Note: These devices are not interchangeable with "classic connection" devices on the previous page. See spec sheets for more information.*

PASS-THROUGH CONNECTIONS

Models include a power supply with 6 ft. cable, 6 ft. standard cord, 6 ft. detachable cord, or 6 ft. flexible conduit (non-metallic) with pigtail leads for hardwired applications.

- Sequencers:** A pass-through sequencer (SEQ-P4 or SEQR-P4) is required to activate pass-through remote power controls and relays. An external trigger (ex. SPST switch or DSP voltage connection) is required to activate the stand-alone sequencer SEQ-P4. Both sequencers feature 4-steps and a switch to adjust the delay between steps.
- Remote Power Controls (RPC):** Pass-through remote power controls (RPC-P Series) require a sequencer (SEQ-P4 or SEQR-P4) for activation. Then they can be connected to each other and relays in any order via the RJ45 jacks on each unit. An onboard DIP switch is used to select the start-up position (step 1-4). Units with surge suppression protect against power surges up to 20,000A (★). ETL Listed.
- Relays:** Pass-through relays (RY-P Series) require a sequencer (SEQ-P4 or SEQR-P4) for activation. Each pass-through relay features one or two independent double-pole double-throw (DPDT) relays that can be used to switch any AC or DC load up to 5A. Contact rating: 5A 30VDC/250VAC. Relays feature two RJ45 jacks and a DIP switch to select the sequence step.
- Power Strip:** The pass-through 20A power strips with 6 or 18 outlets require a sequencer (SEQ-P4 or SEQR-P4) for activation. Onboard DIP switches are used to select the start-up position (step 1-4) for (2 or 8) NEMA 20A duplex receptacles. Another 20A duplex is unswitched (always on).
- Origins:** Assembled in the USA with US steel chassis and global components.



MODEL SUMMARY FOR PASS-THROUGH CONNECTION DEVICES

Model No.	Description	Style	Outlets	Power Input	Surge Protect.	Activation	Connections
SEQ-P4	Sequencer (4-step) for time-delayed activation of connected equipment	Standalone	---	Power Supply	---	External *	(2) RJ45
SEQR-P4	Sequencer (4-step) for time-delayed activation of connected equipment	Rackmount	---	Power Supply	★	Rocker Switch **	TS + (2) RJ45
RPC-P15	Remote power control for activating remote equipment	Standalone	(2) NEMA 15A	6' Cord	---	Sequencer *	(2) RJ45
RPC-P15-S	Remote power control for activating remote equipment	Standalone	(2) NEMA 15A	6' Cord	★	Sequencer *	(2) RJ45
RPC-P15-U	Remote power control for activating remote equipment	Standalone	(2) IEC C13	(2) 6' Det. Cords	---	Sequencer *	(2) RJ45
RPC-P20-SCD	Remote power control for activating remote equipment	Standalone	(2) NEMA 20A	6' Cord	★	Sequencer *	(2) RJ45
RPC-P20-SHW	Remote power control for activating remote equipment	Standalone	(2) NEMA 20A	6' Flex-Conduit	★	Sequencer *	(2) RJ45
RPC-P30-SHW	Remote power control for activating remote equipment	Standalone	(1) Twistlock 30A	6' Flex-Conduit	★	Sequencer *	(2) RJ45
RY-P1	Module with 1 independent DPDT relays, 5A contact rating	Standalone	---	Power Supply	---	Sequencer *	(2) RJ45
RY-P2	Module with 2 independent DPDT relays, 5A contact rating	Standalone	---	Power Supply	---	Sequencer *	(2) RJ45
ACS-2006-3C-RPCP-HW	Power strip featuring RPC for activating remote equipment	Power Strip	(6) NEMA 20A	6' Flex-Conduit	★	Sequencer *	(2) RJ45
ACS-2018-5C-RPCP-HW	Power strip featuring RPC for activating remote equipment	Power Strip	(18) NEMA 20A	6' Flex-Conduit	★	Sequencer *	(2) RJ45

* Items are required but not included. Order external activation switches or sequencer (SEQ-P4 or SEQR-P4) separately. ** An external activation switch for SEQR-P4 is optional and sold separately. Det. Cord = Detachable Cord; TS = Terminal Strip



ADVANCED SURGE PROTECTION

POWER DISTRIBUTION PRODUCTS

Lowell's Advanced Surge Protection provides multiple layers of protection for equipment on a single circuit. With TCR technology (Triple Clamping Redundancy), these advanced devices can protect sensitive equipment from harmful power surges and spikes up to 72,000A when fully active.

FEATURES:



- Suppresses line to neutral with no ground contamination
- Rotating outlet plate allows front or side access to outlets.
- Detachable (Det. Cord) or attached cord (Cord) and hardwired units (Flex-Conduit)
- Mounting brackets for versatile installation
- ETL Listed (conforms to UL1449-4). ANSI C62.41 compliant.
- Choice of over/under protection (VTE, turns outlets off when voltage exceeds specified parameters), or remote power control (RPC, allows SPD to be controlled by a remote switch—not included).

MODEL SUMMARY

Model No.	Power Rating	Outlets	Power Input	Chassis (H x W x D)	Misc.	NRTL
ACSPS-1502	15A	(2) NEMA 15A	6' Det. Cord	12" x 2" x 2"	---	ETL
ACSP-1502-VTE	15A	(2) NEMA 15A	6' Det. Cord	1.75" x 9" x 6"	Over/Under Protection (VTE)	ETL
ACSP-1502-RPC	15A	(2) NEMA 15A	6' Det. Cord	1.75" x 9" x 6"	Remote Power Control (RPC)	ETL
ACSP-2002-VTE	20A	(2) NEMA 20A	6' Cord	1.75" x 9" x 6"	Over/Under Protection (VTE)	ETL
ACSP-2002-RPC	20A	(2) NEMA 20A	6' Cord	1.75" x 9" x 6"	Remote Power Control (RPC)	ETL
ACSP-2002-RPC-HW	20A	(2) NEMA 20A	6' Flex-Conduit	1.75" x 9" x 6"	Remote Power Control (RPC)	ETL

• Closeout

MULTI-OUTPUT DC POWER DISTRIBUTION

Designed for continuous operation, multi-output power supplies feature voltage outputs that are available in various combinations of 5VDC, 12VDC, or 24VDC. This is an ideal format to streamline installations that use DC powered devices. Units available with 3, 8, or 16 outputs.

FEATURES:

- Output terminals are available in various combinations and color-coded for easy identification
- An LED status indicator indicates power status (active/inactive)
- Utilizes voltage output terminals with quick-install screw terminal connectors
- Universal input (100-240VAC 50/60Hz)
- C14 power inlet, compatible with international standards
- ETL Listed (UL60065 compliant)



DCP-12



DCP-524



MODEL SUMMARY

Model No.	Total Watts	Chassis (H x W x D)	Power Input	POWER BANK 1				POWER BANK 2				NRTL
				Output Voltage	Output Qty.	Total Amps	Color	Output Voltage	Output Qty.	Total Amps	Color	
DCP-55	110	1.625" x 12" x 6"	6' Det. Cord	5 VDC	8	11A	Orange	5 VDC	8	11A	Orange	ETL
DCP-512	247	1.625" x 12" x 6"	6' Det. Cord	5 VDC	8	11A	Orange	12 VDC	8	16A	Yellow	ETL
DCP-524	247	1.625" x 12" x 6"	6' Det. Cord	5 VDC	8	11A	Orange	24 VDC	8	8A	Red	ETL
DCP-1212	384	1.625" x 12" x 6"	6' Det. Cord	12 VDC	8	16A	Yellow	12 VDC	8	16A	Yellow	ETL
DCP-1224	384	1.625" x 12" x 6"	6' Det. Cord	12 VDC	8	16A	Yellow	24 VDC	8	8A	Red	ETL
DCP-2424	384	1.625" x 12" x 6"	6' Det. Cord	24 VDC	8	8A	Red	24 VDC	8	8A	Red	ETL
DCP-5	55	1.625" x 7" x 6"	6' Det. Cord	5 VDC	8	11A	Orange	---	---	---	---	ETL
DCP-12	192	1.625" x 7" x 6"	6' Det. Cord	12 VDC	8	16A	Yellow	---	---	---	---	ETL
DCP-24	192	1.625" x 7" x 6"	6' Det. Cord	24 VDC	8	8A	Red	---	---	---	---	ETL

Model No.	Total Watts	Chassis (H x W x L)	Power Input	Output 1 (nominal)			Output 2 (nominal)			Output 3 (nominal)			NRTL
				Voltage	Total Amps	Color	Voltage	Total Amps	Color	Voltage	Total Amps	Color	
PS5124	68	3.625" x 3.25" x 7.5"	6' Det. Cord	5VDC	4A	Orange	12VDC	2A	Yellow	24VDC	1A	Red	ETL

LOW-VOLTAGE (SPST) SWITCHES

Single-pole single-throw switches are available in a rackmount panel or with a one-gang decorator style wall plate. These low-voltage switches are typically used with remote power controls and sequencers.



RPSB-MR



RPSW-2MP



RPSB-MP

FEATURES

- **Closure Type:** Maintained closure (for single switch applications) or momentary closure (for multiple switch applications).
- **Activation:** Rocker or key.
- **Mounting Style:** Switches are available with a one-gang wall plate (decorator style) or mounted in a 19"W x 1U rackmount panel.
- **Color:** Decorator style wall plates are available in black or white. Rackmount models feature a switch with black subplate mounted to a black panel.
- **LED(s):** Units with one LED indicate when the unit is ON. Units with two LEDs indicate when the unit is ON and OFF, providing assurance that power is reaching the unit even when the switch is not activated. *Note: Models with two LEDs are only for use with remote power controls or sequencers that have provisions for the "OFF" indicator (see spec sheets).*
- **Conductors:** Switches with one LED require three conductors; switches with two LEDs require four conductors.
- **Connections:** All units feature rear termination connection strips with wire capacity to 18 gauge. Some units include a single RJ45 jack as an alternate connection choice.
- **Origin:** Assembled in the USA with global components. Rackmount panels are made with US steel.

MODEL SUMMARY

Model No.	Closure Type		Activation	Mounting Style	Color	LED(s)	Conductors	Connections
RPSB-KR	Maintained	---	Key	Rackmount Panel	Black	1	3	Termination Strip
RPSB-KR-RJ	Maintained	---	Key	Rackmount Panel	Black	1	3	Termination Strip + RJ45
RPSB-P	Maintained	---	Rocker	Wall Plate	Black	1	3	Termination Strip
RPSB-P-RJ	Maintained	---	Rocker	Wall Plate	Black	1	3	Termination Strip + RJ45
RPSB-R	Maintained	---	Rocker	Rackmount Panel	Black	1	3	Termination Strip
RPSB-R-RJ	Maintained	---	Rocker	Rackmount Panel	Black	1	3	Termination Strip + RJ45
RPSW-KP	Maintained	---	Key	Wall Plate	White	1	3	Termination Strip
RPSW-KP-RJ	Maintained	---	Key	Wall Plate	White	1	3	Termination Strip + RJ45
RPSW-P	Maintained	---	Rocker	Wall Plate	White	1	3	Termination Strip
RPSW-P-RJ	Maintained	---	Rocker	Wall Plate	White	1	3	Termination Strip + RJ45
RPSB-KP-ASM *	Maintained	---	Key	Wall Plate	Black	1	3	Termination Strip
RPSB2-MKP	---	Momentary	Key	Wall Plate	Black	2	4	Termination Strip
RPSB2-MKP-RJ	---	Momentary	Key	Wall Plate	Black	2	4	Termination Strip + RJ45
RPSB2-MKR	---	Momentary	Key	Rackmount Panel	Black	2	4	Termination Strip
RPSB2-MKR-RJ	---	Momentary	Key	Rackmount Panel	Black	2	4	Termination Strip + RJ45
RPSB2-MP	---	Momentary	Rocker	Wall Plate	Black	2	4	Termination Strip
RPSB2-MP-RJ	---	Momentary	Rocker	Wall Plate	Black	2	4	Termination Strip + RJ45
RPSB2-MR	---	Momentary	Rocker	Rackmount Panel	Black	2	4	Termination Strip
RPSB2-MR-RJ	---	Momentary	Rocker	Rackmount Panel	Black	2	4	Termination Strip + RJ45
RPSB-MKP	---	Momentary	Key	Wall Plate	Black	1	3	Termination Strip
RPSB-MKR	---	Momentary	Key	Rackmount Panel	Black	1	3	Termination Strip
RPSB-MP	---	Momentary	Rocker	Wall Plate	Black	1	3	Termination Strip
RPSB-MR	---	Momentary	Rocker	Rackmount Panel	Black	1	3	Termination Strip
RPSW2-MKP	---	Momentary	Key	Wall Plate	White	2	4	Termination Strip
RPSW2-MKP-RJ	---	Momentary	Key	Wall Plate	White	2	4	Termination Strip + RJ45
RPSW2-MP	---	Momentary	Rocker	Wall Plate	White	2	4	Termination Strip
RPSW2-MP-RJ	---	Momentary	Rocker	Wall Plate	White	2	4	Termination Strip + RJ45
RPSW-MKP	---	Momentary	Key	Wall Plate	White	1	3	Termination Strip
RPSW-MP	---	Momentary	Rocker	Wall Plate	White	1	3	Termination Strip

* This switch is only for use with sequencers featuring ASM (alternate sequencing mode)

A			Desktop/Under Counter Racks	7	LER-BAV Series (LER w/Bundled Accessories)	8
ACHR-1505-S (Power Panel, Half Rack)	29	DFI Series (Foam Drawer Liners)	12	LFD Series (Front Doors)	20	
ACR Series (Power Panels)	29	Display Mount Panel	24	LFR Series (Fixed Rail Racks)	3	
ACR---LT Series (Panels w/Lights)	29	DMR-19 (Display Mount Panel)	24	LGNR Series (Gangable Narrow Racks)	1	
ACR-RPC Series (Power Panels w/RPC)	29	Drawer Liners	12	LGNR-BAV Series (LGNR w/Bundled Accessories)	8	
ACR-SEQ Series (Power Panels w/SEQ)	29	E		LGR Series (Gangable Racks)	1	
ACR---SSI Series (Power Panels w/Interface)	29	Enclosed Racks	3	LGRB-12 (Plastic Bushings)	14	
ACS Series (Power Strips)	28	R		LGSR Series (Seismic-certified, Gangable)	1	
ACS w/RPC-P (Power Strips w/RPC Pass-Thru)	33	FDC Series (Fan Panels)	15	LGT Series (Laminate Tops)	19	
ACSP Series (ADV Surge Protection)	34	FDC1 Series (FDC1 Fan Kits)	14	LGTR Series (Extra-tall Gangable Racks)	2	
ACSPR Series (Power Panels)	29	Floor Racks	1-3	LGVR Series (Gangable Video Racks)	1	
ACSPR-RPC Series (Power Panels w/RPC)	29	Four-Post Racks	2	LHFR Series (Half Racks)	6	
ACSPR-SEQ Series (Power Panels w/SEQ)	29	FS Series (Flat-Ship Wall Shelves)	6	LHR Series (Host Racks)	3	
Advanced Surge Protection	34	FT1-7 Series (Turbo Fan Panels)	16	LHR-FD Series (Front Doors)	20	
AFP Series (Rack Panels)	22	FW Series (Whisper Fan Panels)	16	LHR-RAC Series (Rear Access Covers)	21	
AFPB Series (Rack Panels)	22	FW1-KIT Series (FW1 Fan Kits)	16	LHR-RRT Series (Rack Rails)	19	
AP Series (Rack Panels)	22	FW2-KIT Series (FW 2 Fan Kits)	16	LK-FD (Front Door Replacement Keys)	27	
APB Series (Rack Panels)	22	FW-FF (Fan Filter for FW Series)	16	LK-RD (Rear Door Replacement Keys)	27	
AVPB Series (Rack Panels, Vented)	23	G		LL (Leg Levelers)	27	
C		Gangable Racks	1-2	LLKRD (Rack Key & Lock Set)	27	
C2S (2" Casters)	27	GBB Series (Grounding Bars)	27	LLR Series (Laminated Racks)	3	
Cable Ladder Accessories	15	H		LLR-RRT Series (Rack Rails)	18	
Cable Ladders	15	HUB Series (Hinged Utility Wall Brackets)	5	LMB Series (Mobile Bases)	17	
Cable Management	13-15	HUB-CVR (Top Cover)	19	LMNB Series (Mobile Narrow Bases)	17	
CBP Series (Cable Brush Panels)	13	I		LMSB Series (Mobile Shallow Bases)	17	
CDM (Drawer Mat)	12	In-Wall Boxes	6	LPOR Series (Pull-Out Racks)	6	
CHB Series (Chassis Brackets)	26	IP-ID-1 (ID Panel)	23	LPPR-2432 (Portable Presentation Rack)	7	
CL Series (Cable Ladders)	15	ISO-LL (Isolation Leg Levelers)	27	LPR Series (Portable Racks)	7	
CLA Series (Cable Ladder Accessories)	15	ISO-P1 (Isolation Strips)	27	LPSR Series (Pull-Out Studio Racks, Sloped Front)	7	
Classic Connection Devices	32	IWB Series (In-Wall Boxes)	6	LPTR Series (Pull & Turn Racks)	6	
CLH Series (Cable Ladder Hardware)	15	IWB-CVR Series (Front Covers)	20	LPTR-NS (Zero-Space Shelf)	10	
CLP Series (Cable Ladder Adaptor Panels)	15	IWBK-1414 (In-Wall Box, Breakaway)	6	LPTR-TC (Top Cover)	19	
CMBS Series (Cable Management Bars)	13	IWB-PB Series (Power Brackets)	6	LRD-FV Series (Rear Doors, Fully-Vented)	21	
CMC Series (Cable Management Panels)	13	K		LRND-54FV (Rear Narrow Door, Fully-Vented)	21	
CMD Series (Cable Management Panels)	13	KDMS (Keyboard/Monitor Shelf)	11	LRS Series (Rack Stands, Angled Two-Post)	7	
CMFW Series (Cable Management Flat Wires)	13	KOP-AC1502 (Knockout Panel w/Power)	23	LSB Series (Stationary Bases)	17	
CMHT Series (Cable Management Panels)	13	KOP-B Series (Knockout Panel w/Fans)	23	LSESR Series (Seismic-certified, Enclosed)	3	
CMPS Series (Cable Management Panels)	13	KOP-L Series (Knockout Panel w/Lights)	23	LSSB Series (Shallow Stationary Bases)	17	
CMQ-10 (Cable Manager Rings, Quick-Install)	14	KOP-N (Knockout Panel)	24	LRR-3815 (Relay Rack, Two-Post)	2	
CMR Series (Cable Management Rods)	13	KS Series (Knockdown Shelves)	11	LTCR Series (Tilt-Out, Wall Racks w/Dampers)	4	
CMS Series (Center-Mount Shelves for 3"D channel)	11	KSTB (Clamping Bracket, KS Series)	11	LTR Series (Tilt-Out, Wall Racks)	4	
CMSD Series (Center-Mount Shelves for 6"D channel)	11	L		LVC8P-ID-2 (Punched Panel)	23	
CMV Series (Cable Management Panels)	14	LCC4 Series (Cable Chase)	14	LVR Series (Vari-Rack™, Adjustable Depth)	2	
CR2P Series (Cable Racks, Two-Post)	2	LCDR Series (LCDR w/Installed Accessories)	8	LVR-RRT Series (Rack Rails)	19	
D		LCR Series (Credenza Racks)	6	LWBR Series (Wall Racks w/Base)	4	
D3P-ID-1 (Punched Panel)	23	LCR-RK Series (Protective Runner Kits)	27	LWBR-BD4 (Base Door)	20	
D3P-ID-2 (Punched Panel)	23	LDDF Series (Dual-Door Frames)	21	LWBR-BRR4 (Base Rails)	19	
D4P-1 (Punched Panel)	23	LDR Series (Designer Racks)	3	LWER Series (Wall Racks)	4	
D8P-ID-3 (Punched Panel)	23	LDR-C2SL (2" Casters)	27	LWR Series (Wall Racks)	44	
D9P-ID-3 (Punched Panel)	23	LDSR Series (Desktop Racks, Sloped Front)	7	LWSR Series (Wall Racks)	3	
DAT Series (Data / IT Infrastructure Racks)	1	LDTR Series (Desktop Racks)	7	LXR Series (Slim Frame Racks)	2	
DBB Series (Filler Plates)	23	LDTR-RAC Series (Rear Access Covers)	21	LXR-C3S Series (3" Casters)	27	
DCP Series (Multi-Output DC)	34	LER Series (Enclosed Racks)	3	LXR---CC3 (Cable Chase)	14	

LXR-FD Series (Front Doors)	20	RGH-40 (Ganging Hardware)	27	Stationary Wall Racks	4
LXR-MB Series (Mobile Bases)	17	RL-1B (Utility Light)	24	SVP Series (Rack Panels, Vented)	22
LXR-NS Series (Zero-Space Shelves)	10	RLB-KIT Series (Light Bar Kits)	24	SVPL Series (Rack Panels, Vented)	22
LXR-RAC Series (Rear Access Covers)	21	RMK Series (Shelves w/Hinged Sides)	11	SVSP Series (Rack Panels, Vented)	23
LXR-SB Series (Side Support Brackets)	26	RMK-TCMP (Top Clamp, RMK Shelf)	11	SVSP Series (Top Panels, Vented)	19
M		RPC Series (Remote Power Controls, Classic)	32	SVSPH Series (Rack Panels, Vented, Half Rack)	232
MH4-CD (Media Holder, CD)	12	RPC-P Series (Remote Power Control, Pass-Thru)	33	Swing-Open Wall Racks	4
Multi-Output DC Power Distribution	34	RPL Series (Rack Panels w/Lights)	24	Switches, Low-Voltage (SPST)	35
MVB Series (Magnetic Fan Blockers)	16	RPS Series (Low-Voltage SPST Switches)	35	T	
N		RRB Series (Rack Recess Brackets)	26	Thermal Management	15-16
N10P-ID-1 (Punched Panel)	23	RRD Series (Rack Rails)	18	Tilt-Out Wall Racks	4
Network Interface Panels	29	RRN Series (Rack Rails)	18	TLK (Thumb-Turn Cam Latch)	27
Network Wall Racks	5	RRNT-54 (Rack Rails)	18	Two-Post Racks	3
NR2P Series (Network Racks, Two-Post)	2	RRT Series (Rack Rails, Millwork)	18	U	
NR4P Series (Network Racks, Four-Post)	2	RRTBF (Rail Conversion Bracket)	26	U181RL-LC (Panel w/Light)	24
NR4PA Series (Network, Four-Post, Adj. Depth)	2	RRTF Series (Rack Rails)	18	UCP-1-16 (Universal Punch Panel)	23
O		RS Series (Rack Screws)	26	UDE Series (Utility Drawers)	12
Open Frame Racks	1-2	RS1224-100 (Rack Screws)	26	UDEL Series (Utility Drawers)	12
P		RS6MM-100 (Rack Screws)	26	UDP Series (Utility Drawers)	12
Pass-Through Connection Devices	33	RSD Series (Reversible Shelves/Drawers)	10	Uninterruptible Power Supplies	30-31
PCMB-6 (Power Strip Mounting Bracket)	26	RSM Series (Rack Screws)	26	UPS Accessories	31
PFR Series (Pivot Frame Wall Racks)	5	RSP-500 (Rack Screws)	26	UPS Series (Uninterruptible Power Supplies)	30-31
PFR-FP Series (Front Panels)	20	RSR-50 (Rack Screws)	26	US Series (Utility Shelves)	10
PFR-TC (Top cover)	19	RSR-BIT (Pin Drive Bit)	26	USAC Series (Utility Shelves w/Power Strip)	10
Portable Racks	7	RSV-50 (Rack Screws)	26	USE Series (Utility Shelves, Punched for Electronics)	10
Power Strips	28	RSV-BIT (Pin Drive Bit)	25	USM Series (Utility Shelves, Multi-Mounting Slots)	10
PRK (Protective Runner Kit)	27	RY Series (DPDT Relays, Classic)	32	USMG-114 (Utility Shelf, Flange, Multi-Mounting Slots)	10
Pull-Out Racks	6	RY-P Series (DPDT Relays, Pass-Thru)	33	USV Series (Utility Shelves, Vented)	10
R		S		USVAC Series (Utility Shelves, Vented w/Power Strip)	10
Rack Bases	16	SBL Series (Storage Box)	12	USVC Series (Utility Shelves w/Clamping Brackets)	10
Racks w/Accessory Bundles	8	SDP Series (Side Panels)	25	UVSH Series (Utility Shelves, Half Rack)	11
Rack Doors & Access Covers	20-21	SDPN Series (Side Panels)	25	V	
Rack Drawers	12	SDV Series (Side Panels, Vented)	25	VCD-45 (Vertical Cable Duct)	14
Rack Dual-Door Frames	21	Security Covers (19")	24	VCW-12 (Cable Wraps)	1 ³
Rack Hardware	26-27	SEFP Series (Rack Panels)	22	VDS Series (Variable Depth Shelves)	11
Rack Lighting	24	SEP Series (Rack Panels)	22	VR Series (Wall Racks)	4
Rack Panel Multi-Packs (available online)		SEPH Series (Rack Panels, Half Rack)	22	WVR Series (Wall Racks, Variable Width)	4
Rack Panels (19")	22-23	SEQ Series (Sequencers, Classic)	32	WVS Series (Variable Width Shelves)	11
Rack Panels w/Interface	29	SEQ-P4 (Sequencers, Pass-Thru)	33	W	
Rack Panels w/Power	29	SEQR Series (Rackmount Sequencers, Classic)	32	Wall Racks	4-5
Rack Rails	18-19	SEQR-P4 (Rackmount Sequencer, Pass-Thru)	33	Wall-Mount Shelves	6
Rack Shelves	10-11	Sequencers (Classic Connections)	32	WMS-CPU Series (Wall Shelf for CPU)	6
Rack Side Panels	25	Sequencers (Pass-Thru Connections)	33	WS21-17 (Welded Wall Shelf)	6
Rack Storage	12	SG6P-3 (Punched Panel)	23	WSL-1814 (Wall Shelf)	6
Rack Tops & Covers	19	SGR Series (Swing Gate Wall Racks)	5	WXR Series (Slim Wall Racks)	5
RCC Series (Remote Consolidation Racks)	5	SIP-1 (Service Interface Panel)	28	X	
RCCD Series (Deep RCC Rack w/Flip-top)	5	SLS (Sliding Latching Shelf)	11	ZR-44 (Z-rail)	19
RCN Series (Cage Nuts)	26	SMR Series (Side/Top-Mount Wall Racks)	5	ZRN-44 (Z-rail, Narrow Racks)	19
RDC Series (Rear Door w/Cable Brush Panel)	21	SP Series (Rack Panels)	22		
Relays (Classic Connections)	32	SPH-1 (Panel w/Handles)	23		
Relays (Pass-Thru Connections)	33	SR Series (Swing Gate Wall Racks)	5		
Remote Power Controls (Classic Connections)	32	SSC Series (Security Panels)	24		
Remote Power Controls (Pass-Thru Connections)	33	Standalone Racks	3		

Visit www.lowellmfg.com
for the full line of
Racks, Rackware™ Accessories,
Distributed Power, & Audio Solutions
by



LOWELL MANUFACTURING COMPANY

100 Integram Drive, Pacific, MO 63069 USA | 800-325-9660 | 636-257-3400
www.lowellmfg.com | sales@lowellmfg.com
©2023