



HEARD
EVERYWHERE®

I-MOUNT INSTALLATION SHEET FOR IM12Q-3SW, IM12Q-TS100-3SW, IM12P-3SW, IM12P-TS100-3SW, IM8P-2SW, IM8P-TS100-2SW, IM8A-2SW, IM8A-TS32-2SW

FIGURE 1



TOP VIEW

-2SW (2 Cu. Ft.) Models

BOTTOM VIEW



FIGURE 2



TOP VIEW

-3SW (3 Cu. Ft.) Models

BOTTOM VIEW



FIGURE 3



The front lip of the enclosure must be even with or higher than the face of the ceiling tile.

INSTALLATION SAFETY NOTE:

I-MOUNT speaker systems must be installed by a qualified professional installer in accordance with all local, state, and federal building codes and regulations, and the installation must conform with industry standard practices. Lowell recommends that a safety factor of at least X5 be used when designing any speaker rigging system. It is the responsibility of the installer to consult a Licensed Structural Engineer to verify the structural integrity and safety of any mounting method before installation. After installation, inspect the rigging system regularly and replace worn or damaged rigging components immediately.

Protective Metal Plate:

All Lowell Manufacturing I-MOUNT speaker systems are shipped with a protective metal plate mounted over the speaker driver, so the white front grille is not mounted to the speaker system when it is shipped from the factory. The installer should leave the protective plate in place during the installation of the speaker system. After the speaker system has been permanently installed, remove the protective metal plate and install the front grille. If it is desired to change the color of the front grille, the grille can be spray painted before it is mounted to the speaker system. Take care that the spray paint does not block the round holes in the grille.

Installing in an Open Architecture Ceiling:

The I-MOUNT -2SW speaker systems (2 Cu. Ft. Volume) shown in **FIGURE 1**, and the I-MOUNT -3SW speaker systems (3 Cu. Ft. Volume) shown in **FIGURE 2**, are equipped with four (4) 1/4-20 load rated threaded inserts in the rear of the enclosure. As shipped from the factory, 1/4-20 load-rated forged shoulder eyebolts have been provided in those threaded inserts, which can be used to suspend the enclosure using four (4) load-rated aircraft cables for an exposed open-architecture ceiling installation.

Installing in a Lay-In Tile Ceiling:

The I-MOUNT speaker system enclosures are 23.75" wide so they will fit between the T-bar supports of a 2' X 2' or a 2' X 4' lay-in tile ceiling. Cut a 14.5" X 14.5" square hole in the ceiling tile at the center of the desired enclosure location so that the front lip of the enclosure will fit through the hole and the front lip of the enclosure will be even with or slightly higher than the face of the ceiling tile as shown in **FIGURE 3**.

Important Safety Note: Although the speaker system enclosure can lightly rest on the tile ceiling just to maintain its location in relation to the lay-in tile, the entire weight of the speaker system must be supported by the four (4) load-rated aircraft cables or other rigging hardware that is attached to the four (4) threaded insert points that are provided on the rear of the I-MOUNT enclosure. Lowell Manufacturing often gets feedback from experienced installers who say that their favorite installation method is to use temporary aircraft cables with adjustable turnbuckles to lower an I-MOUNT speaker system into place so that exact height adjustments can be made before the four (4) permanent aircraft cables are installed to support the weight of the speaker system.

Installing in a Drywall Ceiling:

For installation before a drywall ceiling is to be installed, most installers choose to remove the 1/4-20 eyebolts from the rear of the enclosure and use those threaded inserts to attach the enclosure to Unistrut or other load-rated rigging hardware so it will span the structure that will support the drywall or other ceiling. Position the enclosure so that the front lip of the enclosure will be even with or slightly higher than the finished drywall ceiling when it is installed. Always be sure to leave the protective metal plate in place so the ceiling installers can't damage the speaker system's driver.

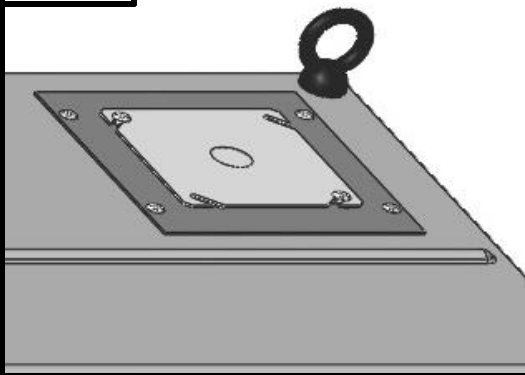
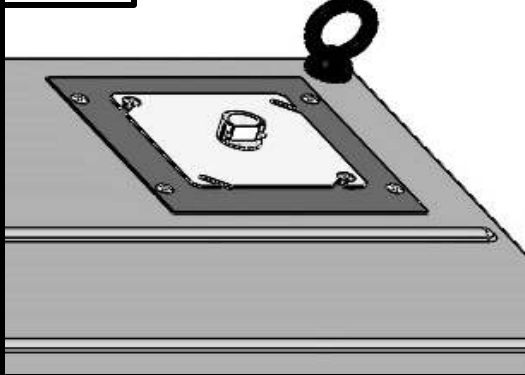
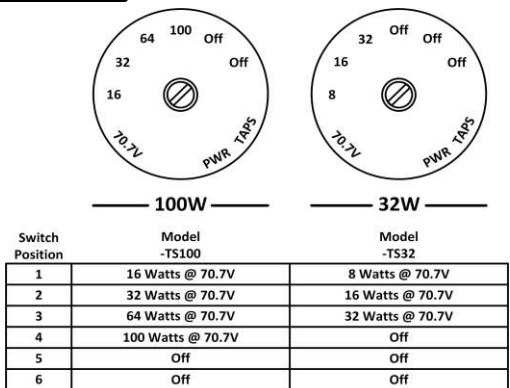
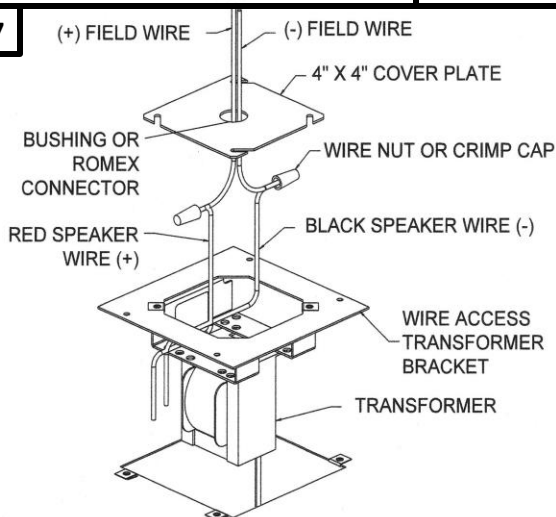
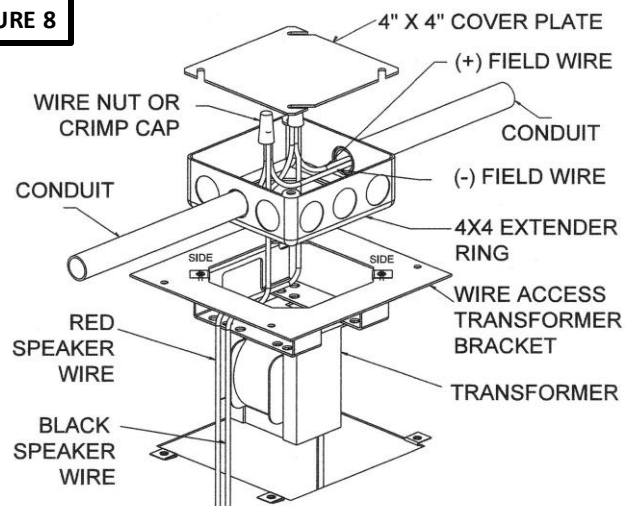
Lowell Manufacturing Company

Call: 800-325-9660 Fax: 636-257-6606

• 100 Integram Drive • Pacific, Missouri 63069 U.S.A.
Click: www.lowellmfg.com

Printed 4-1-17

Instruction Sheet:
IM INSTALL REV A
P/N: 22037
Page 1 of 2

FIGURE 4**FIGURE 5****FIGURE 6****FIGURE 7****FIGURE 8**

Transformer Mounting Plate and Rear Cover Plate:

The I-MOUNT speaker system enclosures include a rear 4" X 4" cover plate that allows access to the wiring compartment as shown in **Figure 4**. If a transformer is included, it is mounted on a special bracket directly below the 4" X 4" cover plate. The rear cover plate includes a ½" conduit knockout which can be removed and replaced with a UL Listed bushing to protect the speaker cable or a ½" Romex connector as shown in **FIGURE 5**. The knock-out can also be replaced with a UL Listed fitting for flexible conduit if required. The typical cover plate configuration is shown in **FIGURE 7**. If solid EMT conduit is required, after the speaker system has been mounted in its permanent location, a 4" X 4" extension ring (furnished by the installer) can be used to pipe in and out of the speaker system enclosure as shown in **FIGURE 8**.

Typical Wiring Method:

Pull the field speaker wiring through the bushing, Romex connector, or conduit. Connect the field speaker wiring to the two (2) conductors sticking out of the rear of the speaker system. Red is the positive (+) lead and black is the negative (-) lead. Use UL Listed wire nuts or crimp caps as desired to make the splice. Push the splice into the cavity above the transformer or into the extension ring (if one is used for EMT conduit) and close the 4" X 4" cover. Note: The splice must be enclosed inside of the wiring cavity or extension ring and be enclosed by the 4" X 4" cover to meet the NEC code.

Setting the Transformer Tap Switch and Mounting the Grille:

Finally, remove the protective metal plate. For models that include a transformer, set the transformer tap selector switch that is located next to the driver with a slot-head screwdriver. The tap selections are described in **FIGURE 6** for models with 100 watt or 32 watt transformers. For 8-ohm models, there is no selector switch provided. Mount the front grille with the four (4) white screws that are provided.