



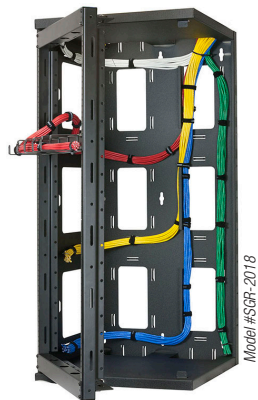
# SGR Series

## Swing Gate Wall Rack with Fully-Open Side

Panel Space:	12U and 20U
Overall Depth:	13.21" [336] and 19" [483]
Overall Width:	20.03" [509]
Load Capacity:	150 lbs. [58 kg]

OPEN FRAME WALL-MOUNT RACK provides extraordinary access with a gate that swings open 90 degrees from a fully-open side, making wiring and servicing quick and easy. Ideally suited to telecommunications rooms, voice and data equipment, patch panels, routers, hubs, and switches

Gate swings open from a fully open side — there's no vertical bar in this corner of the rack frame, which gives you extraordinary access to equipment and cables.



## FEATURES

**CONSTRUCTION:** Steel swing-gate frame with fully-welded wrap creates a unique wall-mount rack design with one fully-open side.

**TWO-PIECE FIELD ASSEMBLY:**

- Heavy-duty steel wrap mounts to wall.
- Swing-gate frame mounts to front of wrap.

**OPERATION:**

- Wrap can be mounted so swing-gate frame swings open left or right. Gate swings open 90 degrees, leaving one side of wrap fully-open for easy access to equipment and cables.
- Thumb latches secure frame closed

**INSTALLATION:** Mounting holes on 16" centers.

**MOUNTING RAILS (fixed position):** One-pair rails tapped 10-32 on EIA spacing.

**CABLE MANAGEMENT:** Abundant cable paths and tie points.

**HARDWARE:** Pilot point rack screws.

**COMPLIANCE:** EIA compliant. TAA compliant. BAA compliant.

**ORIGIN:** Made in USA

## A&E SPECIFICATIONS

The wall-mount rack shall be Lowell SGR-\_\_\_\_\_ which shall measure \_\_\_\_\_"H x 20.03"W x 19.00"D. Construction shall be steel with black finish (semi-gloss and textured). The rack shall feature one fully-open side and a gate that swings open 90 degrees to access cables and equipment. Thumb latches shall secure the frame closed. The rack shall provide \_\_\_\_ rack units of panel space and include cable paths, tie points, and one-pair of fixed position mounting rails tapped 10-32. Load capacity shall be 150 lbs. The rack shall be manufactured in the USA using USA-certified steel and have a black powder-coat finish. It shall be Trade Agreement Act (TAA) compliant and Buy American Act (BAA) compliant.



## SERIES SUMMARY

Model No.	Rack Units	Overall Depth	Usable Depth	Overall Height	Overall Width	Load Capacity	Fixed Rails
SGR-1212	12 U	13.21 [336]	11.60 [295]	27.48 [698]	20.03 [509]	150 lbs [68kg]	1 pr
SGR-1218	12 U	19.00 [483]	17.60 [447]	27.48 [698]	20.03 [509]	150 lbs [68kg]	1 pr
SGR-2018	20 U	19.00 [483]	17.60 [447]	41.47 [1053]	20.03 [509]	150 lbs [68kg]	1 pr

Rack dimensions (rounded) – inches and [mm]; 1U = 1.75"

## TECHNICAL DRAWINGS

Dimensions are inches and [mm] unless stated otherwise.

