



CR2P Series

Two Post Cable Rack

Overall Width:	23.50 inches [597 mm]
Panel Space:	45U and 52U
Rack Height:	85.65 inches [2176 mm]; 97.90 inches [2487 mm]
Overall Depth:	18.00 inches [457 mm]
Load Capacity:	800 lbs. [362 kg] when evenly distributed
Finish:	Smooth black powder coat finish



TWO POST CABLE RACK with 6"D channel rails provides stable support for large cable bundles. The rack includes plastic twist-lock cable managers that can be mounted on the front, sides, back, or interior of the channel rails for versatile cable management.

FEATURES

CONSTRUCTION: Certified U.S. steel — 12-gauge steel top, base, and channel rails with smooth black powder coat finish. Ships unassembled.

TOP: The fully open, two-piece angle support with formed side channels and cable tie-off points allows the rack to accept cable bundles and cable ladder accessories.

BASE: Two-piece angle support has four holes to secure the rack to the floor to aid stability or comply with code (anchors not included). The space saving 23.5"W footprint is designed to fit 2' x 2' floor space.

VERTICAL CHANNELS: Two 6"D steel channels feature holes for ganging as well as multiple cable pass-through points. The channels are printed with numbered rack unit increments (front/back). The front holes are tapped 12-24 on EIA spacing. The back features square holes on EIA spacing). Grounding studs at top and bottom.

CABLE MANAGEMENT: Includes ten (10) molded plastic, twist-lock (quarter turn) cable managers that can be mounted to the front, back, sides or interior of channel rails. No tools required.

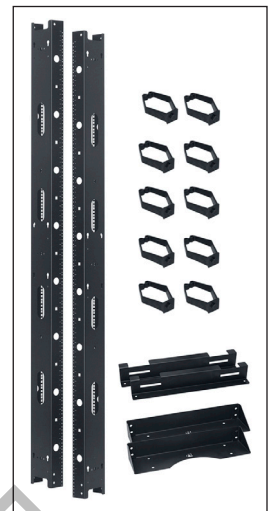
HARDWARE: Assembly and panel mounting hardware.

COMPLIANCE:

- EIA/TIA compliant
- BAA compliant
- TAA compliant

OPTIONAL:

- CL Series: Cable ladders and accessories
- VCD-45: Vertical cable duct with two 22.5U sections, which assemble to 45U overall



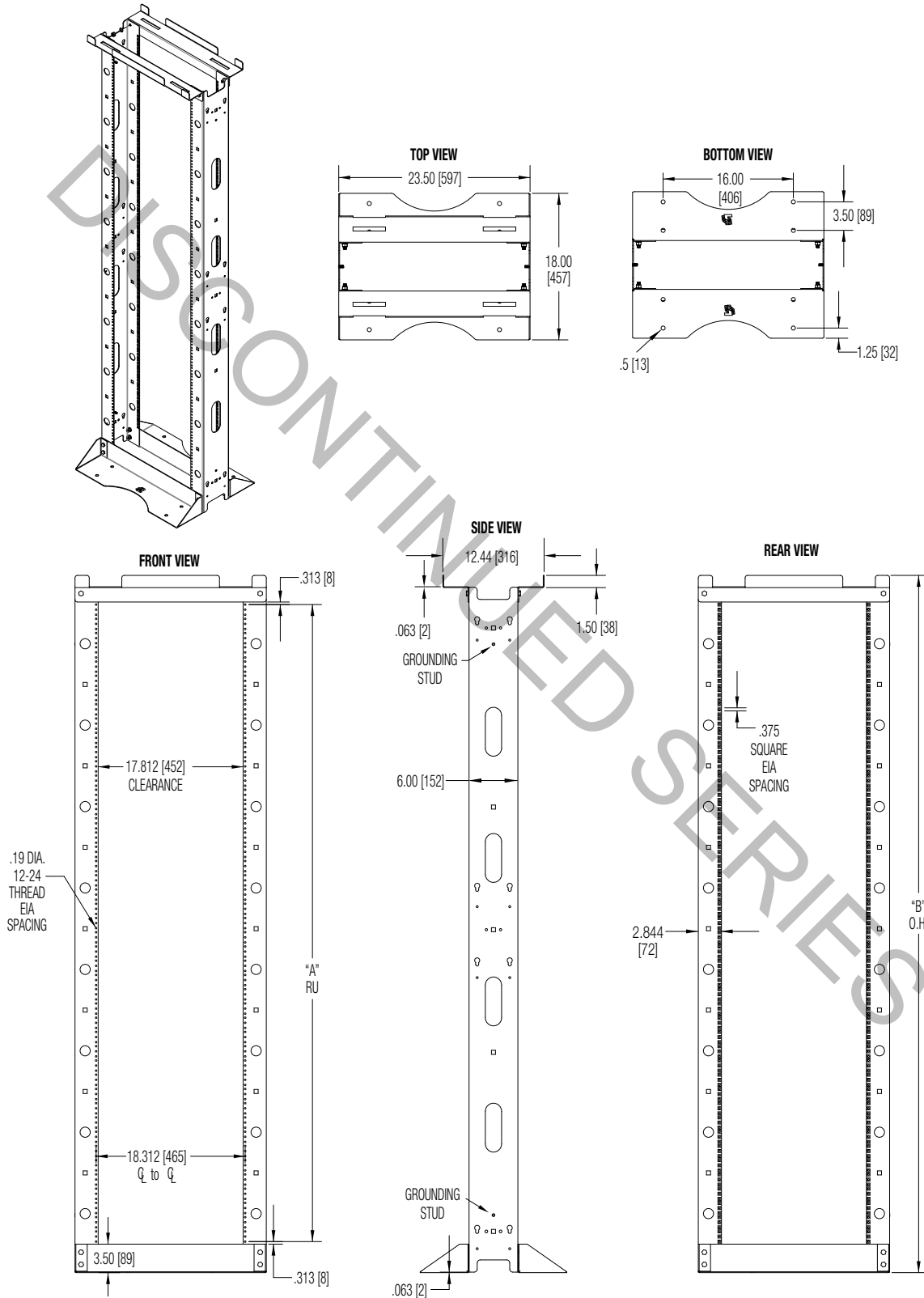
CR2P Series racks ship unassembled.



Quarter-turn, twist-lock cable managers add versatility to cable management.

TECHNICAL DRAWINGS

Dimensions: inches unless stated otherwise.



A&E SPECIFICATIONS

The EIA/TIA compliant two-post, gangable cable rack shall be Lowell Model CR2P-_____, which shall measure 23.50"W x 18.00"D (at base) x _____"H, providing panel space of ____ rack units. Rack construction shall be a two-piece steel top and two-piece steel base, which shall feature four holes for anchoring to the floor (anchors not included). The cable rack shall include two 12-gauge steel (6"D) vertical channels with numbered RU increments (front/back); one side shall feature mounting holes tapped 12-24 on EIA spacing; the other side shall feature square holes. Top, base, and vertical channels shall have a smooth black powder coat finish. The rack shall ship unassembled. It shall include 10 quarter-turn (twist-lock) cable managers, assembly and panel mounting hardware.

CR2P SERIES MODEL SUMMARY

Model No.	Overall Width inches [mm]	"A" Rack Units	Overall Depth inches [mm]	"B" Overall Height inches [mm]	Channel Rail Depth inches [mm]	Quarter-Turn Cable Managers	Load Capacity lbs [kg]	Color
CR2P-4518	23.50" [597]	45 U	18.00" [457]	85.65" [2176]	6 [152]	10	800 [362kg]	Black
CR2P-5218	23.50" [597]	52 U	18.00" [457]	97.90" [2487]	6 [152]	10	800 [362kg]	Black

1U = 1.75".

CONTINUED SERIES