



# NR4PA-4542

## Four Post Network Rack with Adjustable Depth

Overall Width:	20.25 inches [514 mm]
Panel Space:	45U
Overall Height:	84.25 inches [2140 mm]
Rack Depth:	36"-42" [914-1219 mm]
Overall Depth:	48"-54" [1219-1372 mm] with base angle supports
Load Capacity:	800 lbs. [362 kg]
Finish:	Smooth black powder epoxy finish



FOUR POST NETWORK RACK WITH ADJUSTABLE DEPTH provides full access to 19" rackmounted electronics such as routers, switches, UPS's, etc. and the open design provides unrestricted airflow. An economical rack – ideal for telecommunications, equipment rooms and other network applications.

## FEATURES

**CONSTRUCTION:** Heavy duty 12-gauge certified U.S. steel top, base, and channel rails for bolted assembly (ships unassembled). Smooth black powder epoxy finish.

**TOP:** Fully open two-piece angle support with cable tie-off points allows the rack to accept cable bundles. The rack is compatible with optional cable ladders and ladder accessories.

**BASE:** Two-piece angle support has four holes to secure the rack to a floor to aid stability or comply with code (anchors not included).

**VERTICAL CHANNEL RAILS:** Four double-sided 3"D channel rails are tapped 12-24 and feature printed RU increments to simplify equipment installation. Rails feature ganging holes, cable pass through holes, and grounding studs at top and bottom.

**ADJUSTABLE SIDE SUPPORTS:** Six supports adjust to different depths. They feature a small window that shows depth setting.

**HARDWARE:** Assembly hardware.

### COMPLIANCE:

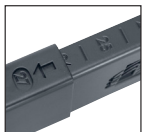
- EIA/TIA compliant
- Made in U.S.A.
- Certified U.S. steel

### OPTIONAL:

- CMQ-10: Molded plastic, diamond-shaped cable managers. 10 pack.
- CL Series: Cable ladders and accessories
- VCD-45: Vertical cable duct for high density cable management.



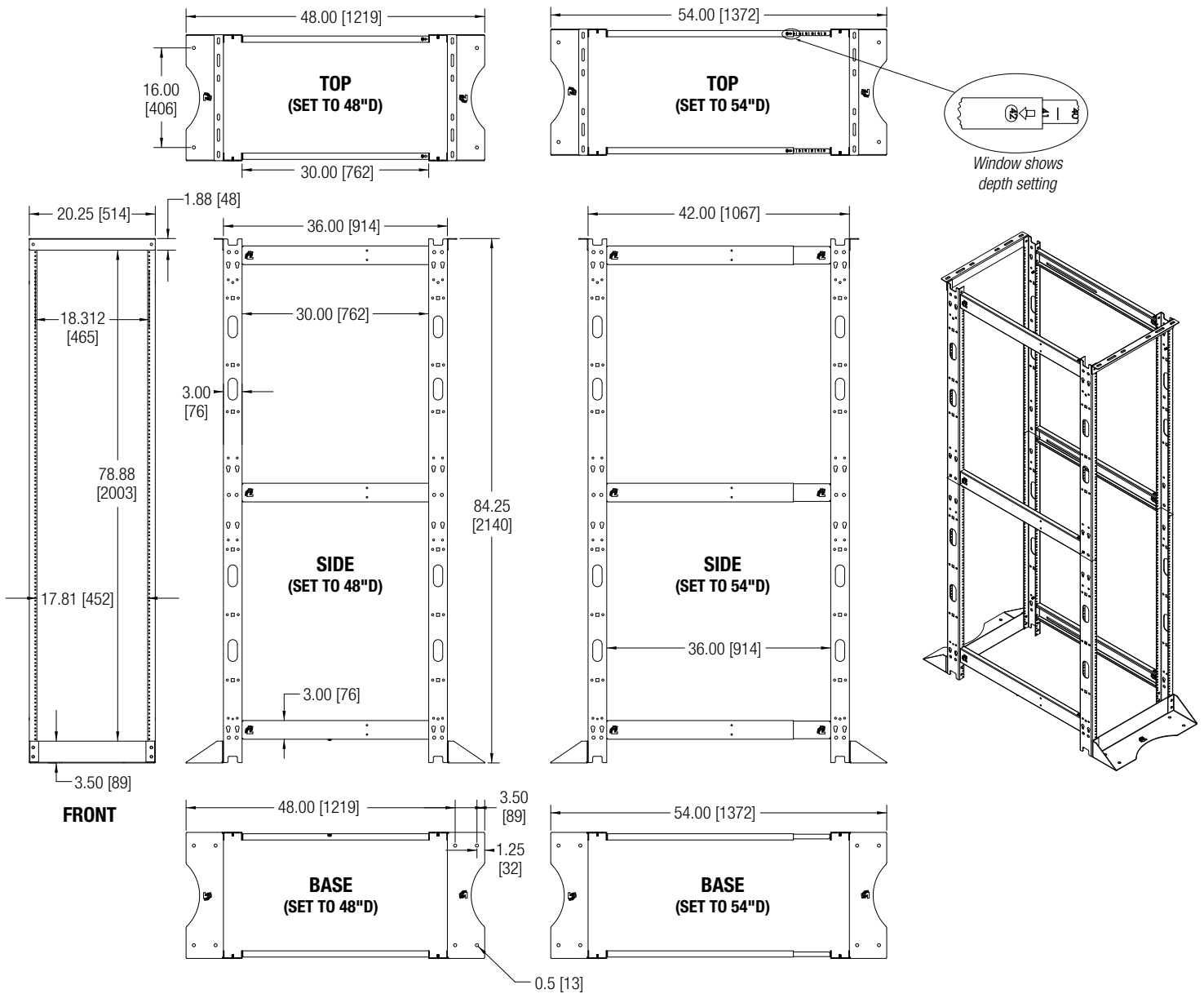
NR4PA Series racks ship unassembled.



Side supports have a window that shows depth setting.

# TECHNICAL DRAWINGS

Dimensions: inches [mm] unless stated otherwise.



## A&E SPECIFICATIONS

The EIA/TIA compliant four-post network rack shall be Lowell Model NR4PA-4542, which shall provide 45U rack units of panel space and measure 20.25"W x 84.25"H. It shall have an adjustable depth that can be set between 36–42" (48–54" overall). Construction shall include a two-piece steel top and two-piece steel angle support base, which shall feature four holes for anchoring to the floor (anchors not included). It shall include four 12-gauge steel (3"D) double-sided vertical channel rails with mounting holes tapped 12-24 on EIA mounting centers and featuring printed RU marks. The rack shall include adjustable side supports with windows to determine the depth setting. It shall have a smooth black powder epoxy finish. The rack shall ship unassembled and include assembly hardware.

### NR4P SERIES (STANDARD DEPTH)

Model No.	Overall Width inches [mm]	Rack Units	Rack Depth inches [mm]	Overall Depth (w/supports) inches [mm]	Overall Height inches [mm]	Vertical Channel Depth inches [mm]	Load Capacity lbs [kg]	Color
NR4P-4530	20.25 [514]	45U	30.00 [762]	42.00 [1067]	84.25 [2140]	3 [76]	800	Black
NR4P-5230	20.25 [514]	52U	30.00 [762]	42.00 [1067]	96.50 [2451]	3 [76]	800	Black
NR4P-4536	20.25 [514]	45U	36.00 [914]	48.00 [1219]	84.25 [2140]	3 [76]	800	Black
NR4P-5236	20.25 [514]	52U	36.00 [914]	48.00 [1219]	96.50 [2451]	3 [76]	800	Black

### NR4PA SERIES (ADJUSTABLE DEPTH)

Model No.	Overall Width inches [mm]	Rack Units	Rack Depth inches [mm]	Overall Depth (w/supports) inches [mm]	Overall Height inches [mm]	Vertical Channel Depth inches [mm]	Load Capacity lbs [kg]	Color
NR4PA-4536	20.25 [514]	45U	24–36 [610-914]	36–48 [914-1219]	84.25 [2140]	3 [76]	800	Black
NR4PA-4542	20.25 [514]	45U	36–42 [914-1067]	48–54 [1219-1372]	84.25 [2140]	3 [76]	800	Black

1U = 1.75"