

Model No.

UCP-1-16

Universal connector panel

FEATURES:

- 19-inch x 1U rack panel
- 16 laser-cut knockouts
- Rear flange/tray



THE UNIVERSAL CONNECTOR RACK PANEL features 16 laser-cut knockouts in a variety of sizes to mount a broad range of connectors. The 19-inch steel panel with smooth black powder epoxy finish includes a rear flange or tray to assist with cable management.

FEATURES

DESCRIPTION: Rackmount panel with multiple knockouts to mount a variety of connectors

CONSTRUCTION: 18-gauge certified U.S. steel

FINISH: Smooth black powder epoxy finish

OVERALL WIDTH: 19-in.

OVERALL HEIGHT: 1.75-in. (1U)

OVERALL DEPTH: 3-in.

KNOCKOUTS: 16 laser-cut combination knockouts are sized to accept a variety of connectors including Neutrik and XLR, as well as male/female styles.

REAR TRAY: The rear flange/tray has multiple holes to assist with cable management.

NET WEIGHT: 1 lbs.

CERTIFICATION & COMPLIANCE:

- Made in U.S.A. with certified U.S. steel
- EIA/TIA compliant

A&E SPECIFICATIONS

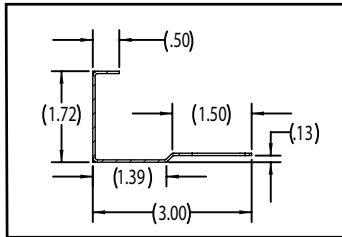
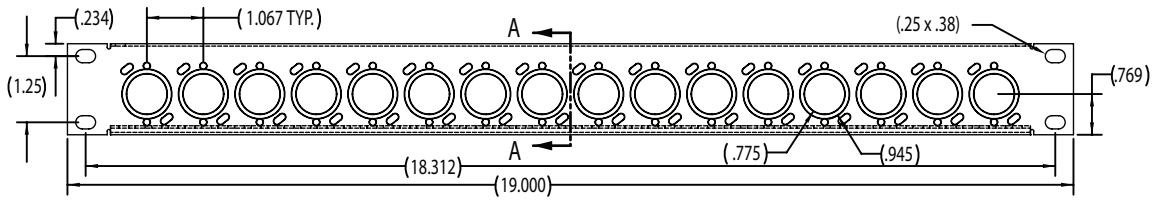
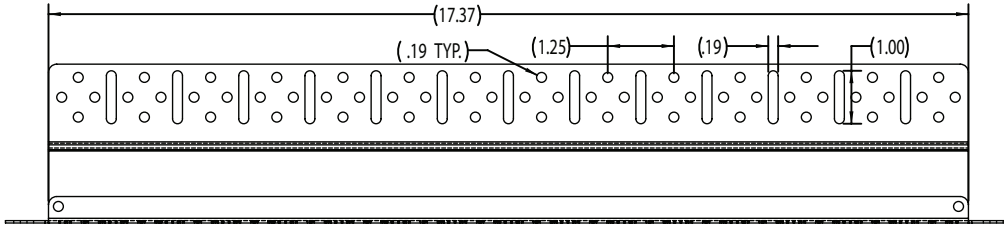
The universal connector rackmount panel shall be Lowell model UCP-1-16, which shall be 18-gauge certified U.S. steel with a smooth black powder epoxy finish. It shall feature 16 laser-cut combination knockouts sized to accept a variety of connectors, and a rear flange/tray to assist with cable management. Panel dimensions shall be 19-in. wide x 1.75-in. high (1U) x 3-in. deep. The panel shall be made in the U.S.A.



The panel offers a variety of knockouts

DRAWINGS

Measurements are inches unless noted otherwise



SECTION A-A
SCALE 1:1.5