

Transformer for high quality audio systems and general purpose paging applications where wide frequency response, low insertion loss, and high power handling are critical considerations, features an industry standard open housing design and color-coded (teflon-coated) leads.

### FEATURES:

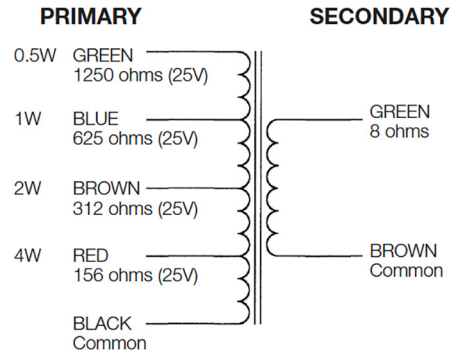
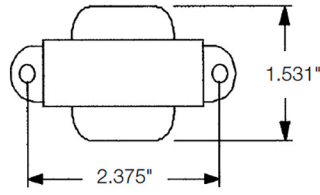
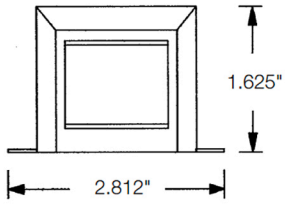
- Primary Voltage: 25V
- Power Rating: 4W
- Primary Taps: 4, 2, 1, and .5W
- Secondary Impedance: 8ohms
- Insertion Loss: .8dB
- Frequency Response: 60Hz–15kHz ±1dB
- Leads: Color-coded (teflon-coated)
- Lead Length: 8 inches

### A&E SPECIFICATIONS:

The line matching transformer shall be Lowell model TLM-425T. Primary voltage shall be 25V with a power rating of 4 watts. Primary taps shall be available at 4, 2, 1 and .5 watts. Secondary impedance taps shall be available at 8ohms. Taps shall have color-coded, teflon-coated leads. Frequency response of the transformer shall be 60Hz–15kHz ±1dB with insertion loss not to exceed 0.8dB.

Model No.	Primary Voltage	Power Rating	Primary Taps	Secondary Impedance	Core Size	Insertion Loss	Frequency Response	Lead Length	Color-coded Leads
TLM-425	25V	4W	4, 2, 1, 0.5W	8 ohms	.625" X .625"	.8dB	60Hz-15kHz ±1dB	8"	standard
<b>TLM-425T</b>	<b>25V</b>	<b>4W</b>	<b>4, 2, 1, 0.5W</b>	<b>8 ohms</b>	<b>.625" X .625"</b>	<b>.8dB</b>	<b>60Hz-15kHz ±1dB</b>	<b>8"</b>	<b>Teflon*</b>
TLM-25T	25V	4W	4, 2, 1, 0.5W	8 ohms	.625" X .625"	.8dB	60Hz-15kHz ±1dB	8"	Teflon*
TLM-470T	70V	4W	4, 2, 1, 0.5W	8 ohms	.675" X .675"	.8dB	60Hz-15kHz ±1dB	8"	Teflon*

\* Teflon-coated leads



DISCONTINUED MODEL

