

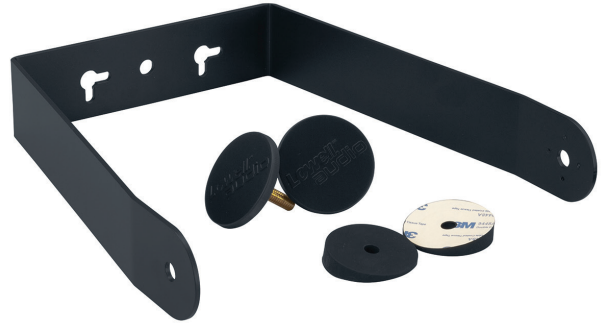
Model No.

ESP-6-BRKTB

U-bracket for 6-1/2-inch speaker

INCLUDES:

- U-bracket
- Adjustment knobs
- Silicone spacers



U-STYLE MOUNTING BRACKET, for use with Lowell ESP Series 6-1/2 inch speaker, is made of CRS steel with black powder epoxy finish.

FEATURES

BRACKET: 11-gauge CRS steel bracket with black powder epoxy finish. Bracket dimensions are provided in drawings on page 2.

SILICONE SPACERS: Because ESP Series speakers are tapered, the spacers are used to create flat areas on each side of the speaker to enable the U-bracket to mount properly.

- Includes two silicone spacers (shore hardness 75A) with adhesive backing.
- See the speaker installation sheet for instructions that include speaker prep and proper orientation of spacers and adjustment knobs.

ADJUSTMENT KNOBS: The knobs are used to screw the U-bracket to the speaker at threaded insert points located beneath plugs, which have to be removed, and to adjust the angle of the speaker. See the speaker installation sheet for more information.

- Includes two black knobs

A&E SPECIFICATIONS

The 6-1/2 inch ESP Series loudspeaker shall be mounted with Lowell U-bracket model ESP-6-BRKTB, which shall be 11-gauge CRS steel with black powder epoxy finish. The steel bracket shall be made in the U.S.A. with certified U.S. steel. It shall include two silicone spacers and two black adjustment knobs for speaker orientation.

INSTALLATION

WARNING! Pendant-mount speaker installation should only be performed by experienced qualified professionals with a complete working knowledge of load-rated hardware and safe installation, mounting, and rigging techniques. Improperly installed equipment can result in property damage, personal injury, death, and/or liability for the installing contractor. The speaker system must be mounted in accordance with all local, state, and federal building codes and regulations and the installation must conform to industry standard practices. It is the responsibility of the installer to properly select all installation hardware, rigging hardware, and safety or restraint cables to be used. BEFORE INSTALLATION, it is the responsibility of the installer to consult a licensed mechanical or structural engineer to evaluate and certify the structural integrity and safety of any mounting method and the suitability of that method to be used to mount the pendant loudspeaker to the building structure in this particular installation. All speaker rigging systems must be designed with a minimum of a 5X safety factor. Lowell Manufacturing Company is not responsible for the use, misuse, misapplication, or unsafe installation of any loudspeaker that it has manufactured.

TECHNICAL DRAWINGS

Dimensions are inches unless stated otherwise.

