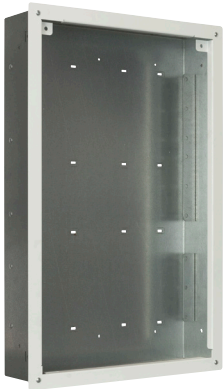




Galvanized steel box includes white trim plate and three repositionable elevated panels.



Optional cover panel



Optional power bracket

FEATURES

- **Height:** 22.25" [362] box
23.00" [381] box w/trim plate
- **Width:** 14.25" [362]
15.00" [381] box w/trim plate
- **Depth:** 3.6" [92] usable
3.8" [95] depth w/trim plate
- **Description:** The in-wall box mounts between standard 16" studs, providing a handy storage area behind wall-mounted displays, while serving as a convenient and adaptable distribution point for various devices and cabling.
- **Construction:** Galvanized steel box and a white steel trim plate.
- **Repositionable Panels:** Three elevated panels can be moved, removed, or reversed to mount upside down—whatever's needed for the application.
- **Knockouts & Cable Management:** Laser knockouts in top and base for cable bundles and one-gang electrical box (not included). Rear anchors for cable tie-off.
- **Installation:** The in-wall box mounts between standard 16" studs to fit in a 4"D wall. Depth positioning tabs aid placement.
- **Grounding Stud:** Included in base
- **Compliance:** RoHS compliant
- **Load Capacity:** 15 lbs.
- **A&E Specifications:** The in-wall box shall be Lowell IWB-2214, which shall feature a galvanized steel box with white trim plate. Overall dimensions, including trim plate, shall be 23"H x 15"W x 3.8"D. The box shall mount between 16" stud centers. It shall feature three removable mounting panels for devices, top and bottom knockouts for cables and 1-gang electrical boxes, and a grounding stud.
- **Optional:** (order separately)
 - IWB-2214-CVR: Steel cover panel with cable exit, vents, and white finish.
 - IWB-PB Series: A power bracket with two or three duplex outlets can fit in base if one elevated panel is removed.

IWB SERIES SUMMARY

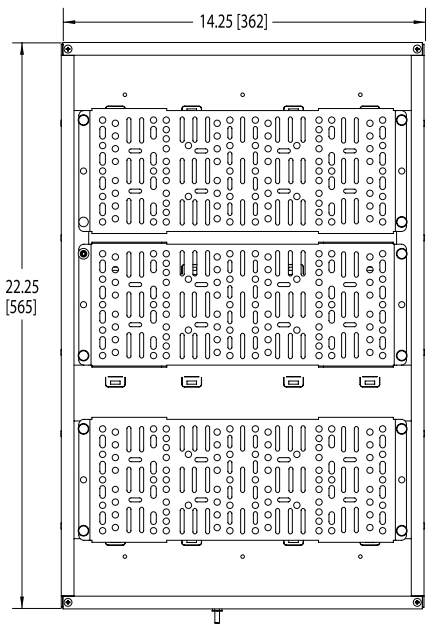
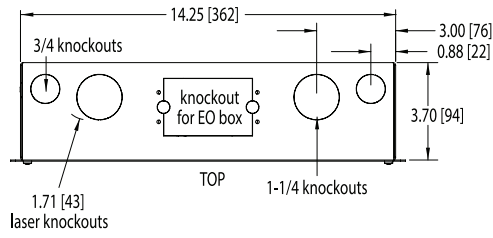
Model No.	Box Height	Overall Height w/Trim Plate	Box Width	Overall Width w/Trim Plate	Usable Depth	Overall Depth w/Trim Plate	Removable Mounting Panels	Load Capacity
IWB-914	9.25 [235]	10.00 [254]	14.25 [362]	15.00 [381]	3.6 [92]	3.8 [95]	1	15 lbs
IWB-1414	14.25 [362]	15.00 [381]	14.25 [362]	15.00 [381]	3.6 [92]	3.8 [95]	2	15 lbs
IWB-2214	22.25 [565]	23.00 [584]	14.25 [362]	15.00 [381]	3.6 [92]	3.8 [95]	3	15 lbs

Dimensions = inches [mm]

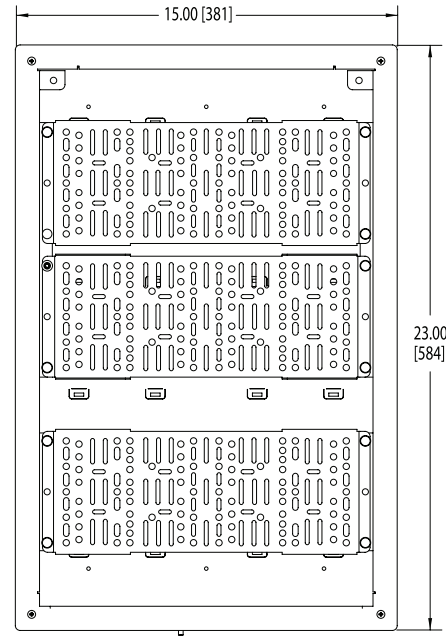


TECHNICAL DRAWINGS

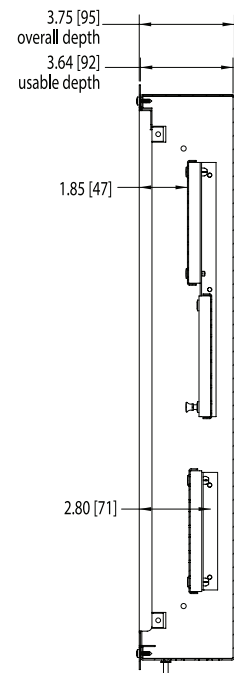
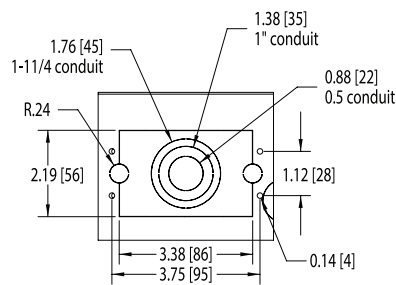
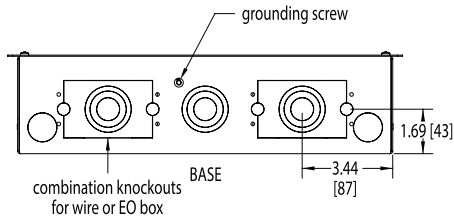
Dimensions are inches and [mm] unless stated otherwise.



FRONT without trim ring



FRONT with trim ring



SIDE SECTION with trim ring

