



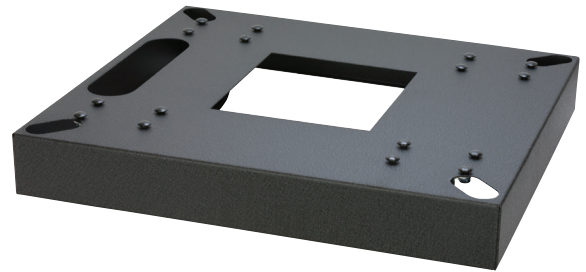
**Model No.**

# LXR-MB21F

**Mobile Base for Slim Rack w/fine floor casters**

### Construction & Features

- 16-gauge skirted base mounts under rack.
- Provides support for heavy equipment mounted in lowest rack position.
- (4) Fine floor swivel casters with a special formula rubber tread that won't mar fine floors like wood, marble or tile. Total load rating 620 lbs.
- Cable and center openings in base
- Includes hardware for bolt-on installation
- 19"W x 21"D
- Increases overall rack height 4.06"
- Black wrinkle powder epoxy finish
- For use with Lowell slim built-in racks with 21" depth (LXR and LVR when the variable depth rack is set to specific depth)



Fine floor caster

### A&E Specifications

The mobile base for the rack shall be Lowell Model No. LXR-MB21F, which shall mount under the rack frame to add mobility to rack. Construction shall be 16-gauge welded steel with a black wrinkle powder epoxy finish. The heavy-duty, fine floor swivel casters shall be inside the platform increasing rack height 4.06". Casters shall have a total load rating of 620 lbs. The mobile base shall feature bottom openings for cable routing. Overall measurements shall be 19"W x 21"D. Mounting hardware shall be included.

### Model Number Summary

Model No.	Description	Depth	Width	Height	Height w/Casters
LXR-MB21F	Mobile base for slim rack w/fine floor casters	21"	19"	2.85"	4.06"

## Technical Drawings

