



Model No.

ACSP-2002-IG-HW

*US Patent No. D535178S

- Stand-alone unit
- Three stage surge protection
- Defeats surges to 72,000A
- Two 20A insulated ground outlets (1 duplex)



Includes mounting brackets

The compact advanced surge protector provides the highest current capacity available in devices of its size to protect multiple pieces of electronic equipment on a single circuit. It features industrial strength “zero failure” technology backed by a ten year warranty. The compact body has a very low profile and includes two mounting brackets for easy installation on a wall, under a counter, in a rack, or just about anywhere.

Features

- TCR technology defeats surges up to 72,000 amps with zero failures.
- Suppresses line to neutral with no ground contamination.
- LEDs provide system status
- Two 20A insulated ground outlets (1 duplex) with patented* plate that rotates 90° for front or side access.
- Mounting brackets allow versatile installation
- Low-profile chassis (1.75”H x 6”D x 9”W)
- 6-ft. non-metallic flexible conduit
- ETL Listed, ANSI C62.41 Compliant
- Conforms to UL 1449-4
- 10 year warranty

A & E Specifications

The 20A single-circuit surge protector shall be Lowell model ACSP-2002-IG-HW with one duplex outlet. It shall be ETL Listed and conform to UL1449-4. It shall meet ANSI C62.41 and protect line to neutral without ground wire contamination. It shall be capable of protecting electronic equipment from transient voltages, spikes and surges up to 72,000 amps and have a response time of less than 5 nanoseconds. It shall include mounting brackets and two 20A insulated ground outlets mounted on a plate that can be rotated 90 degrees for front or side access. It shall include LEDs for surge diagnostics.

Mechanical Specifications:

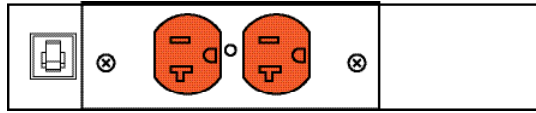
Dimensions	9”W x 1.75”H x 6”D
Weight	5 lbs.
Input Connections	6-ft. non-metallic flexible conduit
Output Connections.....	(1) duplex 20A insulated ground receptacle mounted on 90° rotatable plate.
Chassis	Steel with black powder epoxy finish
Mounting	(2) brackets

Performance Specifications:

Operating Voltage/Current	120VAC / 20A, 60Hz
Maximum Surge Current	72,000A (exceeds UL1449-4 6000V, 3000A)
Initial Clamping Voltage	205V, UL rating 400V
Endurance.....	IEEE C62.41-1991, B3 (C1), Pulses (lifetime): 1kv≥1,000,000; 3kv≥100,000; 6kv≥5000
Transient Noise Reduction	29dB@100kHz, 70dB@1MHz
Response Time	Less than 5 nanoseconds
Temperature Range.....	25°C (77°F) nominal
Protection Mode	Line to neutral, zero ground leakage
UL1449-2 Adjunct Results.....	1000 surges, 6000 volts, 3000A, C1, and B3 waveforms (IEEE C62.41), NO FAILURES
Federal GSA specs (1996).....	Grade A, Class 1, Mode 1
Diagnostic LEDs (surge).....	One green LED for each stage** All stages active when all lit
Applicable Standards	UL1449-4, IEEE standard 587-80 A & B, IEEE standard C62.41-1991, IEC 1000-4-5-1995 (IEC 801-5).
Safety Agency Approvals.....	ETL Listed US and Canada

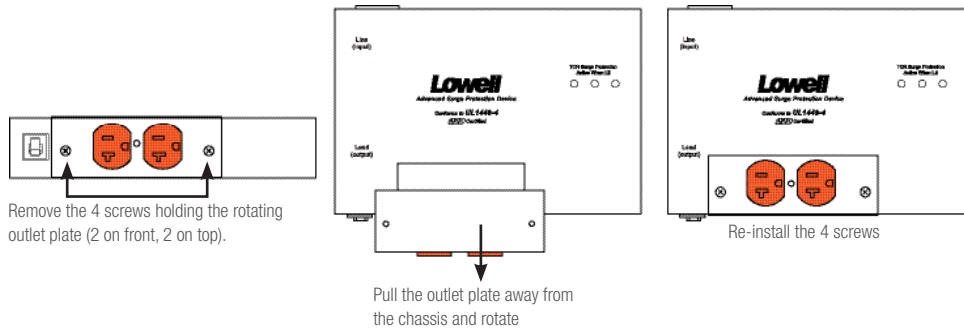
** TCR surge suppression technology provides the assurance of Grade A, Class 1, Mode 1 (A211) endurance and performance with visual diagnostic LEDs. Three stage SPD (surge protective device) has a green LED indicator for each stage to show on-line status. If one stage goes off-line, remaining stages still provide protection at the same clamping and surge levels. In the unlikely event that one or more stages goes off-line, contact Lowell for repair or replacement under the unit's ten year warranty.

Front Panel Layout

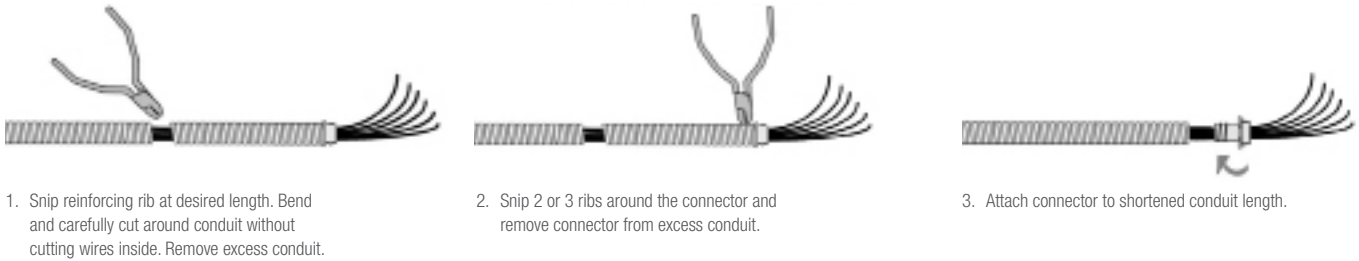


Rotating Outlet Plate*

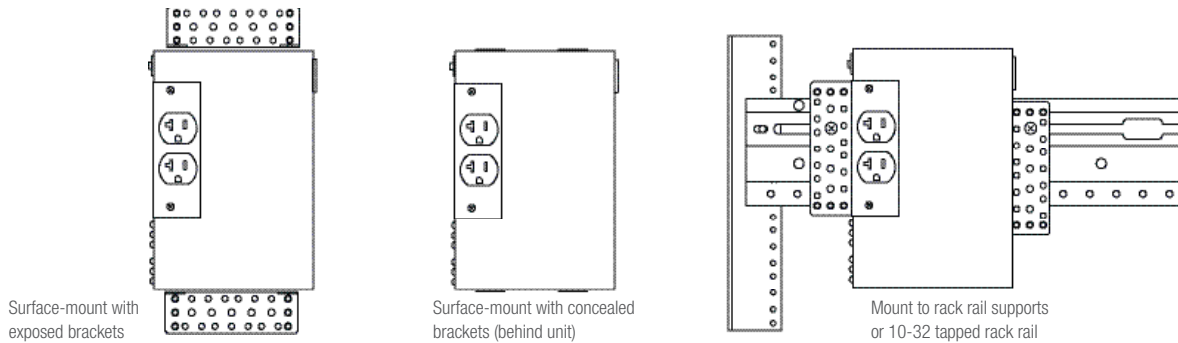
*US Patent No. D535178S



Non-Metallic Flexible Conduit can be trimmed in the field

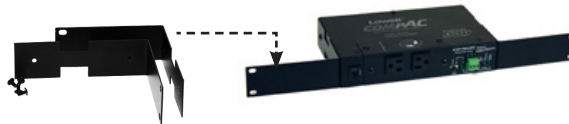


Installation Options with included mounting brackets



Optional Accessory

ACC-1ME Rackmount Ears: Brackets for standard 19" rackmount installation.



Model No. Summary

Model No.	Description	Outlets	Amperage	Termination	Chassis
ACSP-2002-IG-HW	Advanced surge protector	2-IG (1 duplex)	20A	6 ft. non-metallic flexible conduit	9" x 1.75" x 6"
ACC-1ME	Rackmount ears (1-pr)				