

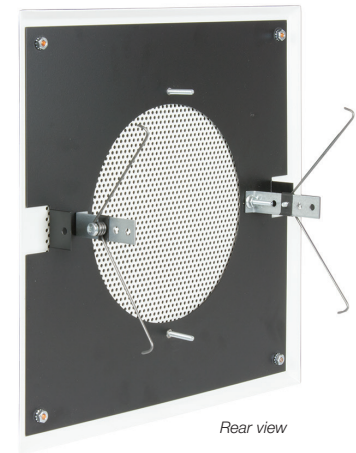
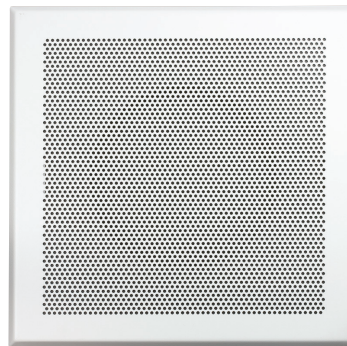
Model No.

FW-8T

Square Grille for 8-inch Speaker

INCLUDES:

- Steel torsion grille with subplate
- Hardware



STEEL, TORSION GRILLE for 8-inch E.I.A. speakers satisfies architectural specifications requiring ceiling speakers to be void of visible mounting hardware. The clean design with fine perforated center uses a subplate with speaker mounting studs and special torsion devices that mount to torsion receptacles in Lowell backbox model RE1175-T (order separately). The grille is ideal for offices, hotels, professional buildings and similar venues.

FEATURES:

CONSTRUCTION: One-piece perforated 18-gauge U.S. steel with beveled edges and white powder epoxy finish. Includes a 20-gauge steel subplate with black powder epoxy finish.

DIMENSIONS: 13-inch square overall

MOUNTING PROJECTION: 0.313-inch

SPEAKER MOUNTING BOLT CIRCLE: 7.68-inch diameter

CENTER HOLE (SUBPLATE): 6.875-in. diameter

COUNTRY OF ORIGIN: U.S.A.

HARDWARE:

- (4) 8-32 x 3/4-inch welded studs with nuts to mount an 8-inch speaker to the subplate.
- (2) bent tabs and spring devices with shoulder bolts/clips to mount to torsion receptacles in a compatible enclosure (Lowell model RE1175-T, order separately).
- (2) brackets with 4 holes for custom installs.

INSTALLATION:

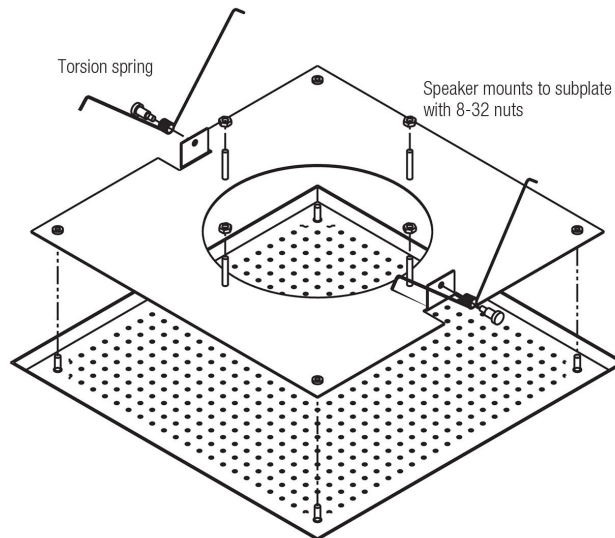
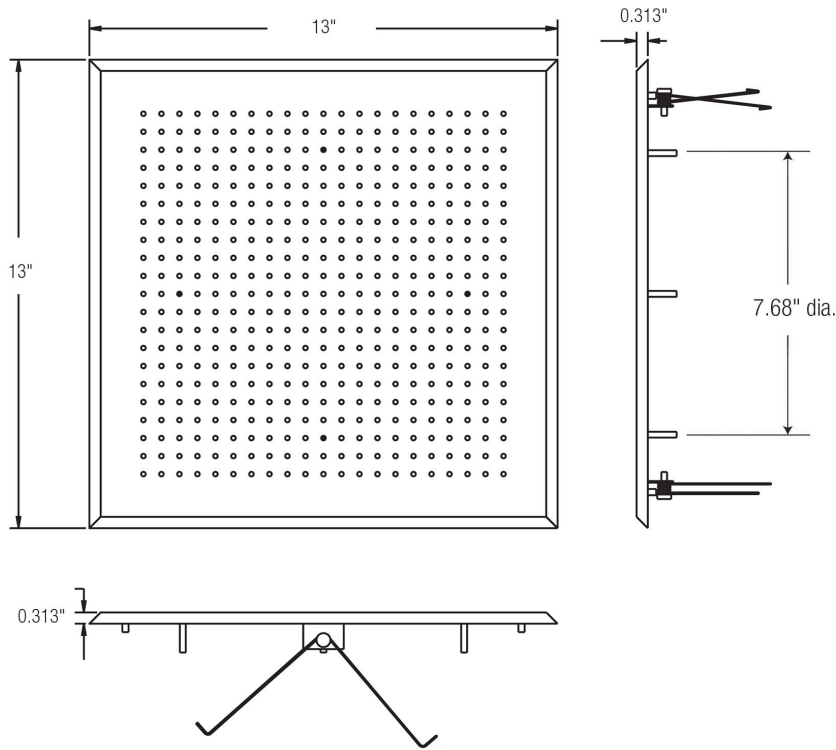
The torsion grille is designed to support a speaker/transformer and grille weighing up to 3.5 lbs. This includes most Lowell speaker/transformer assemblies that have a 5–10 oz. magnet and 4–8W transformer.

- To install, mount the speaker/transformer assembly directly to the welded studs in the subplate. Use the shoulder bolts/clips to mount the torsion springs to the bent tabs in the subplate. The speaker/transformer and grille assembly is then ready to mount to the torsion receptacles in the compatible enclosure.

A&E SPECIFICATIONS:

The torsion-mount square grille for 8-inch speakers shall be Lowell model FW-8T. It shall be 18-gauge steel with white powder epoxy finish, perforated center, and beveled edges. The grille shall include a subplate that has welded speaker studs and torsion bracket/spring devices for installation to a compatible backbox. The grille shall measure 13-in. square overall with mounting projection of 0.313 inches.

DRAWINGS



Torsion springs field-mount to subplate with shoulder bolts for hardware-free appearance.


WARNING! Speaker installation should only be performed by experienced qualified professionals with knowledge of load-rated hardware and safe installation, mounting, and rigging techniques. Improperly installed equipment can result in property damage, personal injury, death, and/or liability to the installing contractor. The speaker system must be mounted in accordance with all local, state, and federal codes and regulations and the installation must conform to industry standard practices. It is the responsibility of the installer to furnish all installation hardware, rigging hardware, and safety or restraint cables to be used. Before installation, it is the responsibility of the installer to consult a licensed mechanical or structural engineer to evaluate and certify the structural integrity and safety of any mounting method and the suitability of that method to be used to mount the loudspeaker to the building structure in this particular installation. Lowell Manufacturing is not responsible for the use, misuse, misapplication, or unsafe installation of this loudspeaker product.

MODEL FW-8T COMPATIBLE COMPONENTS (ORDER SEPARATELY)

Note: Grilles are designed to work with speakers, enclosures, and mounting accessories listed on this specification sheet. Using the grille to install speakers without a metal enclosure may not meet the requirements of all local and national electrical and building codes. The installer should request approval of the installation method from the Authority Having Jurisdiction (AHJ) before installing the speaker system.

Application (with enclosure)	Speaker	Enclosure	Mounting Aids
Recessed in tile ceiling	8-inch E.I.A.	RE1175-T	SS24, SS30, SS48 support rails
Recessed before drywall is installed	8-inch E.I.A.	RE1175-T	SS24, SS30, SS48 support rails

FW SERIES OVERVIEW

<i>Model No.</i>	<i>Grille</i>	<i>For Driver Size</i>	<i>Grille Type</i>	<i>Grille Dimensions</i>	<i>Mounting Projection</i>	<i>Mounting Bolt Pattern (subplate)</i>	<i>Speaker Mounting Bolt Circle (subplate)</i>	<i>Center Hole (subplate)</i>
FW-8	Square	8"	screw-mount	13" square	0.313"	7.68" diameter	11.25" diameter & 12.8" diameter	6.875" diameter
 FW-8T	Square	8"	torsion	13" square	0.313"	7.68" diameter	-----	-----
FW-12	Square	12"	screw-mount	15.25" square	0.375"	16.6" diameter	11.6" diameter	10.5" diameter
FW-12Q	Square	12"	screw-mount	15.25" square	0.375"	12.98" square	11.625" diameter	10.5" diameter

