

Model No.

US-414

Rackmount Utility Shelf



Panel Space:	4U or 6.97" [177]
Overall Depth:	14.00" [356]
Overall Width:	19.00" [483]
Usable Width:	17.68" [450]
Load Capacity:	50 lbs. [22.6 kg]



STEEL UTILITY SHELF with SOLID BASE mounts to 19" E.I.A. compliant rack to support non-rackmount equipment such as consumer electronics, power supplies, or chassis style components. The US Series shelf is available in two depths and multiple heights.

FEATURES

CONSTRUCTION: Single piece 16-gauge certified U.S. steel construction.

FINISH: Smooth black powder epoxy finish

BASE: Solid with tie-off points in rear for cable management

FRONT: Front flange (0.375") adds strength and helps keep equipment in place.

REAR: Slotted rear flange (0.56") provides tie-off points for cable management and notches to mount an optional 12" power strip.

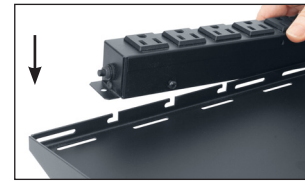
COMPLIANCE: E.I.A./T.I.A.

ORIGIN: Made in the U.S.A.

MULTI-PACK CARTON: Carton of (36) thirty-six shelves are available. See series summary chart on next page.

OPTIONS: (order separately)

- **ACS-1506-WW:** Compact 12" AC power strip with six 15A NEMA outlets, spaced for power supplies, and 6 ft. attached cord.
- **ACS-150Z:** Compact 12" AC power strip with seven 15A NEMA outlets and 6 ft. detachable cord.



Notches on the shelf's rear flange make it easy to mount a 12" power strip (see options).



Available in multi-pack contractor cartons.

A&E SPECIFICATIONS

The rackmount utility shelf shall be Lowell model US-414 with overall dimensions of 19"W x 14"D x 4U. It shall be 16-gauge certified U.S. steel construction with solid base featuring rear tie-off points and smooth black powder epoxy finish. It shall have a front and rear flange for added strength. The rear flange shall have slots to provide tie-off points for cable management, and notches to mount an optional 12" power strip. The shelf shall be made in the U.S.A. and have a load capacity of 50 lbs.

US SERIES SUMMARY

Model No.	Panel Space	Overall Width	Usable Width	Overall Depth	Overall Height	Overall Capacity	Load Material	Finish	Quantity
US-110	1 U	19.00 [483]	17.56 [446]	10.75 [273]	1.72 [44]	50 lbs. [23 kg]	16-ga. steel	Smooth Black	1
US-110CC	1 U	19.00 [483]	17.56 [446]	10.75 [273]	1.72 [44]	50 lbs. [23 kg]	16-ga. steel	Smooth Black	12 pk
US-110MC	1 U	19.00 [483]	17.56 [446]	10.75 [273]	1.72 [44]	50 lbs. [23 kg]	16-ga. steel	Smooth Black	50 pk
US-210	2 U	19.00 [483]	17.56 [446]	10.75 [273]	3.47 [88]	50 lbs. [23 kg]	16-ga. steel	Smooth Black	1
US-210CC	2 U	19.00 [483]	17.56 [446]	10.75 [273]	3.47 [88]	50 lbs. [23 kg]	16-ga. steel	Smooth Black	6 pk
US-310	3 U	19.00 [483]	17.56 [446]	10.75 [273]	5.22 [133]	50 lbs. [23 kg]	16-ga. steel	Smooth Black	1
US-114	1 U	19.00 [483]	17.56 [446]	14.00 [356]	1.72 [44]	50 lbs. [23 kg]	16-ga. steel	Smooth Black	1
US-114CC	1 U	19.00 [483]	17.56 [446]	14.00 [356]	1.72 [44]	50 lbs. [23 kg]	16-ga. steel	Smooth Black	10 pk
US-114MC	1 U	19.00 [483]	17.56 [446]	14.00 [356]	1.72 [44]	50 lbs. [23 kg]	16-ga. steel	Smooth Black	50 pk
US-214	2 U	19.00 [483]	17.56 [446]	14.00 [356]	3.47 [88]	50 lbs. [23 kg]	16-ga. steel	Smooth Black	1
US-214CC	2 U	19.00 [483]	17.56 [446]	14.00 [356]	3.47 [88]	50 lbs. [23 kg]	16-ga. steel	Smooth Black	6 pk
US-214MC	2 U	19.00 [483]	17.56 [446]	14.00 [356]	3.47 [88]	50 lbs. [23 kg]	16-ga. steel	Smooth Black	50 pk
US-314	3 U	19.00 [483]	17.56 [446]	14.00 [356]	5.22 [133]	50 lbs. [23 kg]	16-ga. steel	Smooth Black	1
US-314MC	3 U	19.00 [483]	17.56 [446]	14.00 [356]	5.22 [133]	50 lbs. [23 kg]	16-ga. steel	Smooth Black	36 pk
US-414	4 U	19.00 [483]	17.56 [446]	14.00 [356]	6.97 [177]	50 lbs. [23 kg]	16-ga. steel	Smooth Black	1

THIS SPEC

Dimensions = inches [mm]; 1U = 1.75"

TECHNICAL DRAWINGS

Dimensions are inches and [mm] unless stated otherwise.

