



## Model No. **DX1312** **Acoustic Backbox**

### • For use with 12" speaker

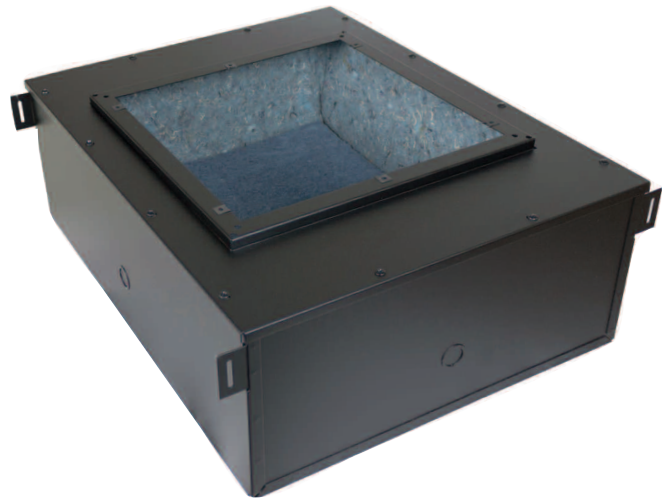
Large volume acoustic backbox is engineered for distributed speaker systems requiring sound reinforcement of the highest quality. It combines the benefits of a large metal enclosure with the acoustic characteristics associated with a 3/4" plywood box, allowing a 12" speaker to operate at its optimum loading level to provide the system with improved low frequency response.

#### Construction & Features

- Rigidly braced fabrication of welded, unitized heavy 18-gauge steel with damping to eliminate acoustical and mechanical resonance.
- 23.25" x 18.25" x 8" (1.9 cu.ft. volume)
- Inner walls lined with 0.5" thick acoustical fiberboard to prevent sympathetic vibrations within the expanse of the cavity.
- Inside surfaces lined with 1.5" premium acoustic lining (1.5 lbs. density rating) to absorb undesirable resonance in high frequency range.
- Four 0.5" to 0.75" conduit knockouts.
- Grille mounting flange projects 0.437" for efficient installation in plaster, poured concrete, sheetrock, or suspended tile ceilings. Includes 8-32 screw retaining U-clips to accept Lowell grille with ported subplate.
- Two sets of slotted tabs welded on parallel sides aid mounting with optional channel rails (No. SS48, order separately). Slotted tabs may also be used as seismic anchor points where required by code.
- Made in the U.S.A. with certified U.S. steel
- Black powder epoxy finish

#### A&E Specifications

The recessed acoustic backbox for 12" speakers shall be Lowell Model No. DX1312, which shall be fabricated of 18-ga. steel heavily damped to eliminate acoustic and mechanical resonance. Inner walls shall be lined with 0.5"



thick acoustic fiberboard and 1.5" thick acoustic lining. Backbox shall measure 23.25" x 18.25" x 8" with internal volume of 1.9 cu.ft. It shall have four 1/2"-3/4" knockouts for conduit and two sets of slotted tabs welded on parallel sides for channel mounting or seismic anchoring. It shall be finished in black powder epoxy.

#### Compatible Components (order separately)

- Speaker .....12P150
- Grilles. ....FW-12
- Channel Rails (pr) .....SS48 \*

\* Recommended for tile ceiling applications.

- Lowell Speaker No. 12Q250 will not fit this backbox.
- Lowell Grille No. FW-12Q will not fit this backbox.

## Technical Drawings

