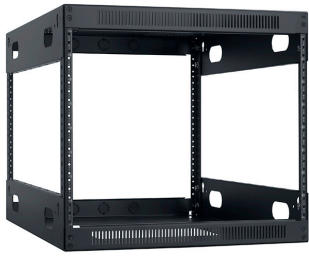


LXR-826

Slim AV Rack



Overall Width:	19.21 inches [586 mm]
Panel Space:	8U
Overall Height:	17.84 inches [453 mm]
Overall Depth:	26.25 inches [667 mm]
Load Capacity:	400 lbs. [181 kg]
Finish:	Smooth black powder epoxy finish



SLIM OPEN FRAME RACK for 19 inch equipment is made to fit where a standard rack may not, such as inside millwork or under a counter. A variety of options are available to make this rack suitable for use in a number of different applications. Ships unassembled.

FEATURES

CONSTRUCTION: 14-gauge certified U.S. steel frame. Smooth black powder epoxy finish. Ships unassembled.

TOP: Steel top has vents on front and top, and combination knockouts in the rear (1/2–3/4 in.).

BASE: Steel base has front vents and a large (10.5 in. x 12 in.) opening in the bottom. It also features combination knockouts in the rear (1/2–3/4 in.).

CORNER POST RAILS: 11-gauge steel corner post rails are tapped 10-32 and printed with bi-directional RU increments (rails can be installed in either direction).

SIDES: Open sides feature multiple obrounds for easy cable management.

HARDWARE: Assembly and panel mounting hardware (hex nuts, flat head screws). Includes 3/8" – 16 threaded T-nuts for optional leg levelers.

COMPLIANCE:

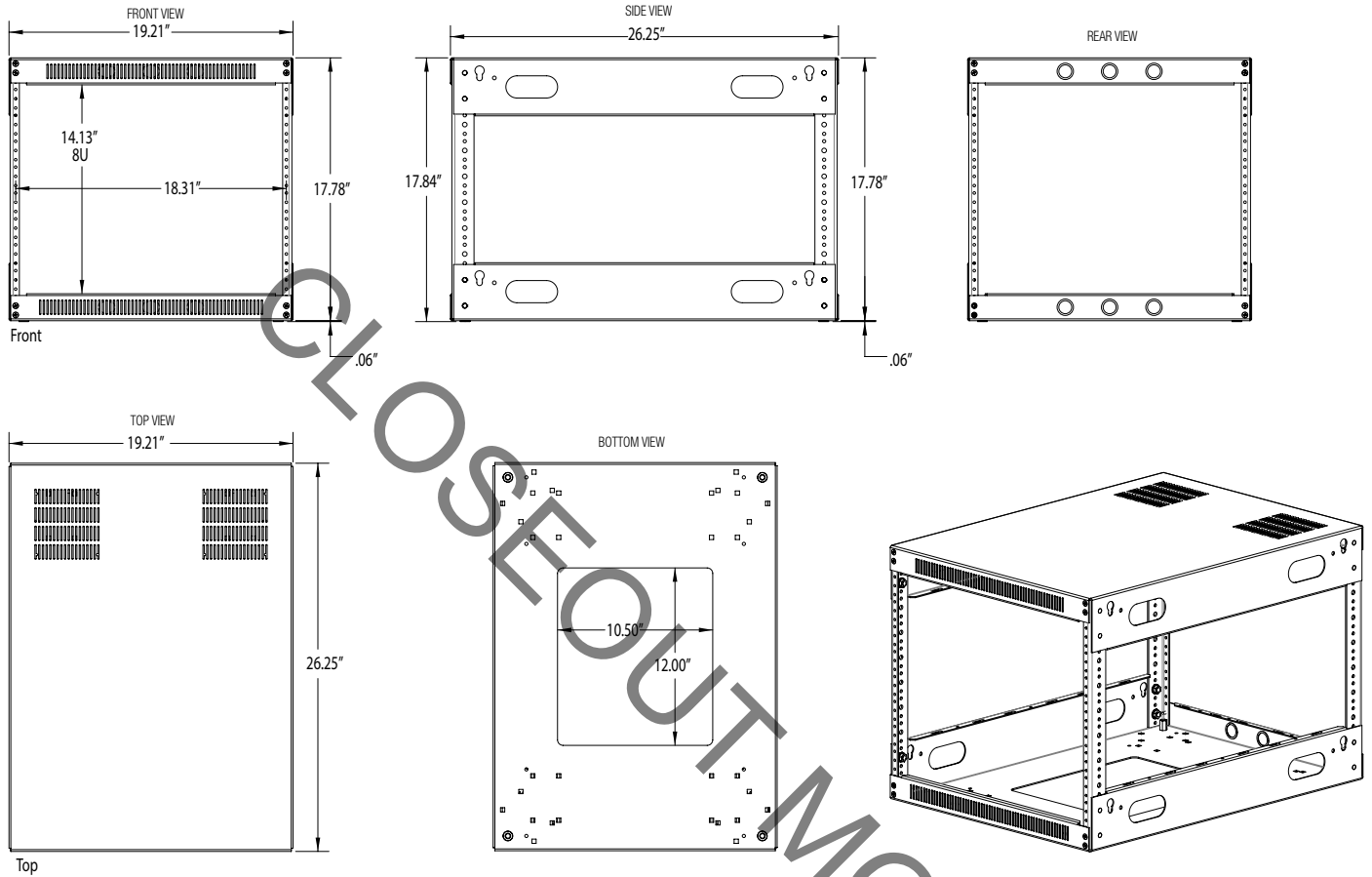
- EIA/TIA compliant
- Made in U.S.A.
- Certified U.S. steel

OPTIONAL:

- LL: Set of 4 leg levelers
- PRK: Protective runner kit for slide-in applications
- LXR-C3S: Set of 4 swivel casters
- LXR-C3SL: Set of 4 swivel casters (two locking)
- LXR-C3SF: Set of 4 swivel casters with special tread to help protect fine floors
- LXR-C3SFL: Set of 4 swivel casters with special tread to help protect fine floors (two locking)

TECHNICAL DRAWINGS

Dimensions: inches [mm] unless stated otherwise.



A&E SPECIFICATIONS

The EIA/TIA compliant 19" equipment rack shall be Lowell model LXR-826 with overall dimensions of 17.84"H x 26.25"D x 19.21"W and usable height of 8 rack units. Construction shall be certified U.S. steel with 14-gauge frame and 11-gauge corner post rails tapped 10-32. The rack shall have a smooth black powder epoxy finish. It shall feature combination knockouts (1/2–3/4") in the rear and side obrounds for cable management. The bottom opening shall measure 10.50" x 12.00". The rack shall be made in the U.S.A. and ship unassembled.

LXR SERIES SUMMARY

Model No.	Rack Units	Overall Depth inches [mm]	Overall Height inches [mm]	Usable Height inches [mm]	Overall Width inches [mm]	Bottom Opening inches [mm]	Bottom Support Rails	Side Support Brackets
LXR-821	8U	21.00 [533]	17.84 [453]	14.00 [356]	19.21 [488]	9 x 10.5 [229 x 267]	4	----
LXR-1421	14U	21.00 [533]	28.34 [720]	24.50 [622]	19.21 [488]	9 x 10.5 [229 x 267]	4	----
LXR-2221	22U	21.00 [533]	42.34 [1075]	38.50 [978]	19.21 [488]	9 x 10.5 [229 x 267]	4	----
LXR-3021	30U	21.00 [533]	56.34 [1431]	52.50 [1334]	19.21 [488]	9 x 10.5 [229 x 267]	4	2
LXR-826	8U	26.25 [667]	17.84 [453]	14.00 [356]	19.21 [488]	12 x 10.5 [305 x 267]	4	----
LXR-1426	14U	26.25 [667]	28.34 [720]	24.50 [622]	19.21 [488]	12 x 10.5 [305 x 267]	4	----
LXR-2226	22U	26.25 [667]	42.34 [1075]	38.50 [978]	19.21 [488]	12 x 10.5 [305 x 267]	4	----
LXR-3026	30U	26.25 [667]	56.34 [1431]	52.50 [1334]	19.21 [488]	12 x 10.5 [305 x 267]	4	2

1U = 1.75"