

Model: ACS-2014-IG-HW

AC Power Strip, Single Circuit – 20A Hardwired

Description:

Model ACS-2014-IG-HW power strip is a 20A hardwired device that provides reliable access to power in racks and stand-alone applications. US-made power strip has a rugged steel chassis and fourteen isolated ground outlets (7 duplex receptacles) in industry standard orange color. The strip is ETL Listed and features multi-mount brackets for versatile and trouble-free installation.

Multi-mount brackets allow for power strip installation in a variety of applications with outlet orientation facing forward, center or rear. Brackets are engineered with multiple mounting points and two types of hardware to facilitate easy power strip installation into cabinets with adjustable or fixed mounting rails or to wall or desk surfaces. The brackets may be mounted so they are exposed for easy access or concealed under the strip for aesthetically clean installation.

The power strip chassis is manufactured of heavy gauge steel and finished in durable black powder epoxy paint. The chassis measures 30"L x 2"W x 2"H. Outlets are orange, industrial-grade isolated ground NEMA 5-20R, 20A duplex receptacles. Strip terminates to flexible (non-metal) conduit that is 6-foot long with pigtail leads.

Features:

- 20A Power strip with 14 isolated ground outlets (7 duplex receptacles).
- Outlets are orange industrial-grade NEMA 5-20R receptacles.
- Strip terminates to flexible conduit that is 6-foot long and may be field cut to shorter lengths.
- Rugged steel chassis is finished in durable black epoxy paint.
- Multi-mount brackets provide mounting versatility nearly anywhere including racks, walls and surfaces of most kinds.
- ETL Listed (US and Canada)
- Made in the USA

A & E Specifications:

Power strip shall be Lowell Model ACS-2014-IG-HW. It shall be ETL listed and made in the USA with a power rating of 20A. Power strip shall include 14 isolated ground outlets (7 duplex receptacles) which shall be orange industrial grade NEMA 5-20R. The chassis shall measure 30"L x 2"W x 2"H. It shall be terminated to flexible, non-metal conduit that is 6-foot long with pigtail leads. It shall install to cabinets with adjustable or fixed mounting rails and to walls and desk surfaces using multi-mount brackets and hardware provided.

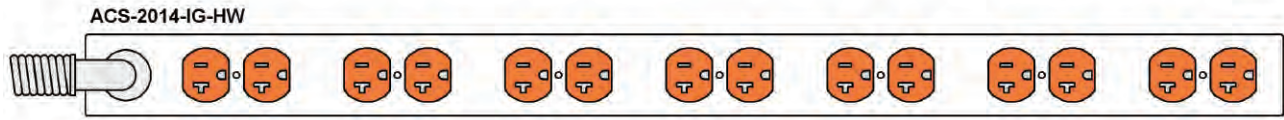


ACS-2014-IG-HW

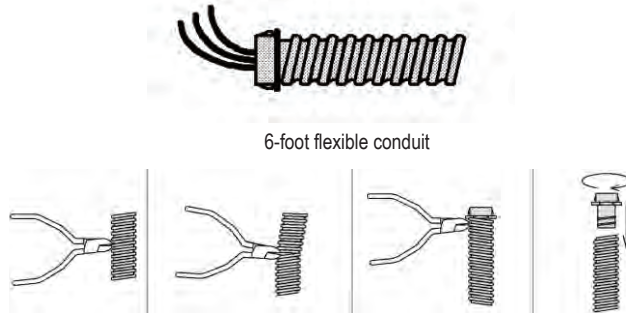
Model No.	Description	Power Rating	Outlets (Isolated Ground)	Termination Hardwire	Switch on/off	Overcurrent Protection	NRTL Listing	Size (LxWxH)
ACS-2014-IG-HW	AC Power Strip	20A, 125 VAC	14 (7 duplex)	6 ft. flex conduit	No	--	ETL	30" x 2" x 2"

AC Power Strip, Single Circuit – 20A Hardwired

Front Panel Layout

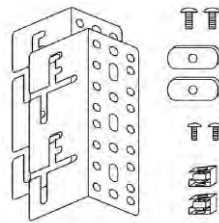


Termination



Flexible conduit may be easily shortened if needed.

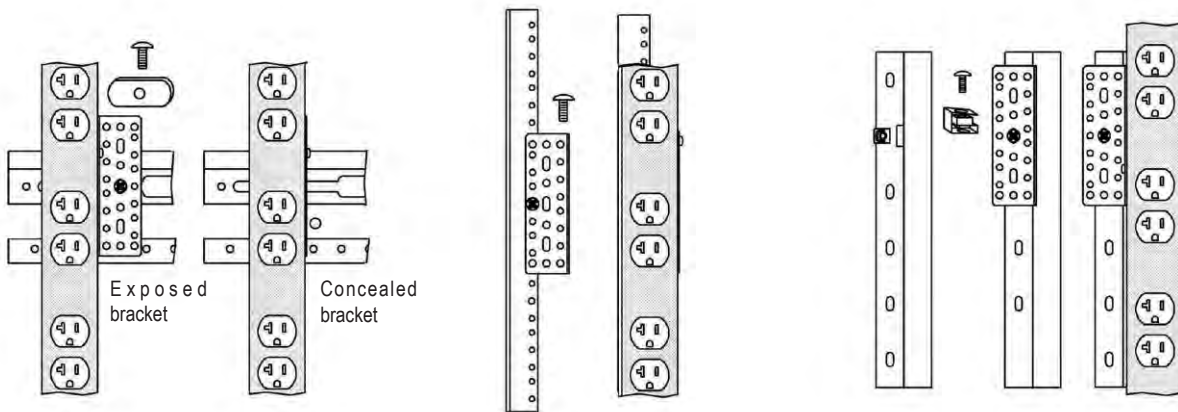
Multi-Mount Brackets



Brackets include multiple hardware sets for versatile installation (see Dia. A).

- (2) Brackets
- (2) 1/4"-20 x 1/2" screws
- (2) flat nuts
- (2) 10-32 x 1/2" screws
- (2) cage nuts

(Dia. A) Power strip installation in racks using Multi-Mount brackets



Rack Type: Adjustable Rail
Strip location: Side of Rack (horiz. supports)
Mtg. Hardware: Multi-Mount Brackets, 1/4"-20 screws, flat nuts

Rack Type: Adjustable Rail
Strip location: Rear rail
Mtg. Hardware: Multi-Mount Brackets, 10-32 screws

Rack Type: Fixed Rail
Strip location: Rear Z-angle
Mtg. Hardware: Multi-Mount Brackets, 10-32 screws, cage nuts