



Includes removable front security panel.



Rackmount utility shelf with punched base is made for quick installation of various Lowell electrical and electronic accessory devices.

### FEATURES

- **Panel Space:** 2U
- **Overall Depth:** 10.00" [254]
- **Overall Width:** 19.00" [483]
- **Construction:**
  - 16-gauge certified U.S. steel
  - Smooth black powder epoxy finish
  - Base is punched to mount various Lowell screw-mount chassis-style devices with nominal measurement of 3"x 5", 3"x 7" or 5"x 6"
- **Security Panel:** Removable front security panel.
- **Flange:** Rear retaining flange (0.44")
- **Load Capacity:** 50 lbs.
- **Cable Management:**
  - Multiple side openings (1½" diameter)
  - Rear cable lacing points
- **Origin:** Made in the U.S.A.
- **Hardware:** Includes mounting hardware
- **Compatible Components:** (order separately)
  - **MSM2:** Momentary switch module
  - **SMG-1:** Sound masking generator
  - **RY Series:** Relay modules
  - **TLM-600:** Impedance matching transformer

### A&E SPECIFICATIONS

The rackmount utility shelf shall be Lowell Model USE-210, which shall be 16-gauge certified U.S. steel with black powder epoxy finish. The 2U x 10"D x 19"W shelf shall be punched on the base to accept various Lowell electrical and electronic accessory devices. The shelf shall feature side openings for cable entry, rear lacing points, and a rear retaining flange. The unit shall include a removable front security panel. Load capacity shall be 50 lbs. The shelf shall be made in the U.S.A.

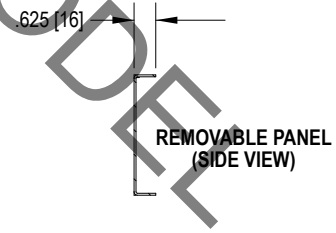
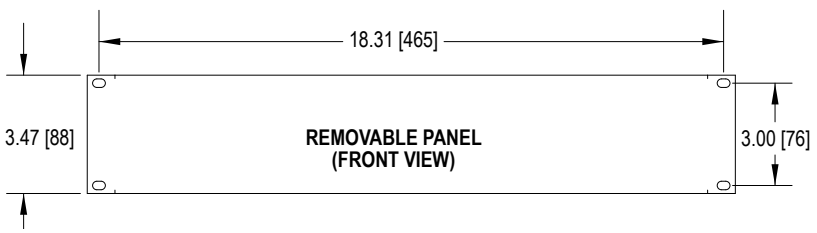
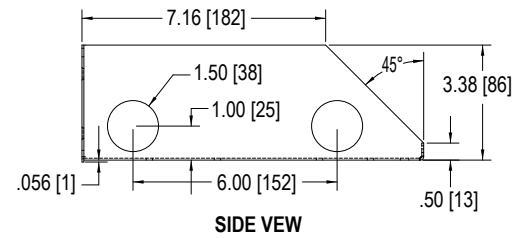
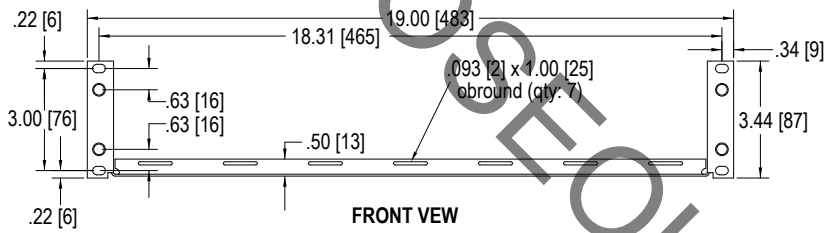
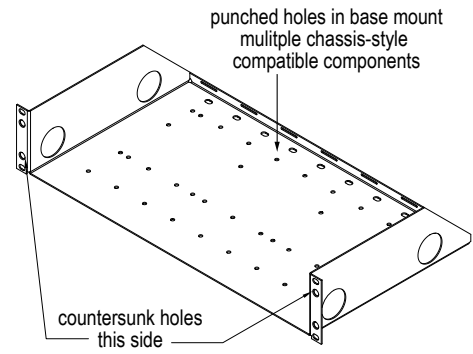
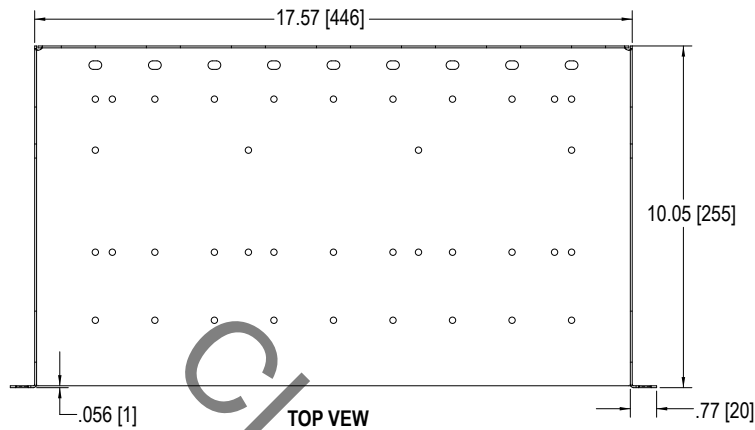
### SERIES OVERVIEW

Model No.	RU	Overall Width	Overall Depth	Overall Height	Load Capacity	Material	Carton Pack
USE-210	2U	19.00 [483]	10.00 [254]	3.50 [89]	50 lbs [23 kg]	16-gauge steel	1
USE-310	3U	19.00 [483]	10.00 [254]	5.25 [133]	50 lbs. [23 kg]	16-gauge steel	1

Dimensions = inches [mm]; 1U = 1.75"



**TECHNICAL DRAWINGS** *Dimensions are inches and [mm] unless stated otherwise.*



INTERNAL USE ONLY: PN 24147